

À des fins de recherche uniquement

Anticorps Polyclonal de lapin anti-SKAP2



Numéro de catalogue: 12926-1-AP

Phare

18 Publications

Informations de base

Numéro de catalogue:
12926-1-AP

Taille:
150ul, Concentration: 600 µg/ml by Nanodrop and 313 µg/ml by Bradford method using BSA as the standard;

Hôte:
Lapin

Isotype:
IgG

Immunogen Catalog Number:
AG3615

Numéro d'acquisition GenBank:
BC036044

Identification du gène (NCBI):
8935

Nom complet:
src kinase associated phosphoprotein 2

MW calculé:
41 kDa

MW observés:
55 kDa

Méthode de purification:
Purification par affinité contre l'antigène

Dilutions recommandées:
WB 1:500-1:3000
IP 0.5-4.0 ug for IP and 1:500-1:1000 for WB
IHC 1:50-1:500

Applications

Applications testées:
FC, IHC, IP, WB, ELISA

Demandes citées:
FC, IF, IHC, IP, WB

Spécificité de l'espèce:
Humain, rat, souris

Espèces citées:
Humain, rat, souris

Remarque-IHC: il est suggéré de démasquer l'antigène avec un tampon de TE buffer pH 9,0; (*) A défaut, 'le démasquage de l'antigène peut être effectué avec un tampon citrate pH 6,0.

Contrôles positifs:

WB : cellules HL-60, cellules NIH/3T3

IP : tissu hépatique de souris,

IHC : tissu de cancer du côlon humain,

Informations générales

SKAP2 (src kinase associated phosphoprotein 2), also named PRAP, contains PH domain and SH3 domain. It is localized in cytoplasm and was expressed in ubiquitously in various tissues including lung, skeletal muscle, and spleen, but not detectable in thymus and T cell lymphoma cells. SKAP2 may negatively regulate alpha-synuclein phosphorylation following cell stress. SKAP2 may be involved in B-cell and macrophage adhesion processes by coupling the B-cell receptor (BCR) to integrin activation. Observed MW of SKAP2 is 55 kDa (PMID: 23161539).

Publications notables

Autrice	Pubmed ID	Journal	Application
Shu-Wen He	28933599	Cell Cycle	WB,IF
Hortensia G Rolán	24034616	Cell Host Microbe	WB
Xianli Wang	36386317	Front Cardiovasc Med	WB

Stockage

Stockage:

Stocker à -20°C. Stable pendant un an après l'expédition.

Tampon de stockage:

PBS avec azoture de sodium à 0,02 % et glycérol à 50 % pH 7,3

L'aliquotage n'est pas nécessaire pour le stockage à -20C

*** Les 20ul contiennent 0,1% de BSA.

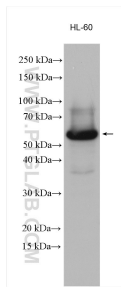
For technical support and original validation data for this product please contact:

T: 1 (888) 4PTGLAB (1-888-478-4522) (toll free in USA), or 1(312) 455-8498 (outside USA)

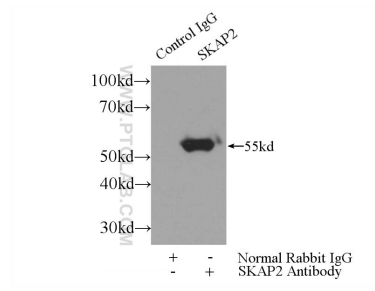
E: proteintech@ptglab.com
W: ptglab.com

This product is exclusively available under Proteintech Group brand and is not available to purchase from any other manufacturer.

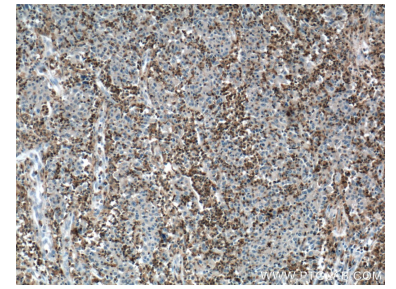
Données de validation sélectionnées



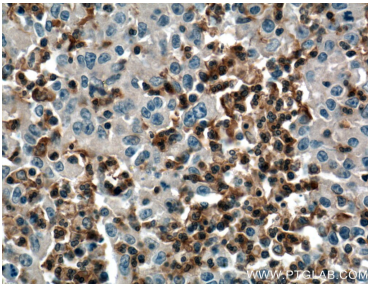
HL-60 cells were subjected to SDS PAGE followed by western blot with 12926-1-AP (SKAP2 antibody) at dilution of 1:1500 incubated at room temperature for 1.5 hours.



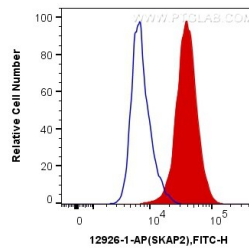
IP Result of anti-SKAP2 (IP:12926-1-AP, 3ug; Detection:12926-1-AP 1:700) with mouse liver tissue lysate 4000ug.



Immunohistochemical analysis of paraffin-embedded human colon cancer tissue slide using 12926-1-AP (SKAP2 Antibody) at dilution of 1:200 (under 10x lens). Heat mediated antigen retrieval with Tris-EDTA buffer (pH 9.0).



Immunohistochemical analysis of paraffin-embedded human colon cancer tissue slide using 12926-1-AP (SKAP2 Antibody) at dilution of 1:200 (under 40x lens). Heat mediated antigen retrieval with Tris-EDTA buffer (pH 9.0).



1X10⁶ NIH/3T3 cells were intracellularly stained with 0.4 ug Anti-Human SKAP2 (12926-1-AP) and CoraLite®488-Conjugated AffiniPure Goat Anti-Rabbit IgG(H+L) at dilution 1:1000 (red), or 0.4 ug Control Antibody. Cells were fixed with 4% PFA and permeabilized with Flow Cytometry Perm Buffer (PF00011-C).