

À des fins de recherche uniquement

# Anticorps Polyclonal de lapin anti-IMPDPH2



Numéro de catalogue: 12948-1-AP

Phare

44 Publications

## Informations de base

Numéro de catalogue:

12948-1-AP

Taille:

150ul, Concentration: 500 µg/ml by Nanodrop;

Hôte:

Lapin

Isotype:

IgG

Immunogen Catalog Number:

AG3632

Numéro d'acquisition GenBank:

BC012840

Identification du gène (NCBI):

3615

Nom complet:

IMP (inosine monophosphate) dehydrogenase 2

MW calculé

514 aa, 56 kDa

MW observés:

56 kDa

Méthode de purification:

Purification par affinité contre l'antigène

Dilutions recommandées:

WB 1:1000-1:6000

IP 0.5-4.0 µg for IP and 1:500-1:1000 for WB

IHC 1:50-1:500

IF 1:50-1:500

## Applications

Applications testées:

IF, IHC, IP, WB, ELISA

Demandes citées:

ELISA, IF, IHC, IP, RIP, WB

Spécificité de l'espèce:

Humain, rat, souris

Espèces citées:

Humain, poisson-zèbre, rat, souris

Contrôles positifs:

WB : cellules A549, cellules HeLa, cellules HepG2, cellules K-562, tissu cardiaque de rat

IP : cellules K-562,

IHC : tissu de cancer du poumon humain,

IF : cellules HeLa,

**Remarque-IHC: il est suggéré de démasquer l'antigène avec un tampon de TE buffer pH 9,0; (\*) À défaut, le démasquage de l'antigène peut être effectué avec un tampon citrate pH 6,0.**

## Informations générales

IMPDPH2, also named as IMPD2, belongs to the IMPDH/GMPR family. It is a rate limiting enzyme in the de novo synthesis of guanine nucleotides and therefore is involved in the regulation of cell growth. It may also have a role in the development of malignancy and the growth progression of some tumors. IMPDPH2 is a key enzyme in the purine nucleotide biosynthetic pathway and constitutes a pivotal biological target for immunosuppressant and antiviral drugs. (PMID:21181270) IMPDPH2 is highly enriched in RR(filamentous rods and rings). This antibody may has cross reaction with IMPDPH1 due to the high homology.

## Publications notables

Autrice	Pubmed ID	Journal	Application
Tai-Wei Li	36177032	Front Immunol	WB
Narges Ahangari	34498062	J Neuropathol Exp Neurol	IF
Shiyu Wang	34673127	Cancer Lett	RIP

## Stockage

Stockage:

Stocker à -20°C. Stable pendant un an après l'expédition.

Tampon de stockage:

PBS avec azoture de sodium à 0,02 % et glycérol à 50 % pH 7,3

L'aliquotage n'est pas nécessaire pour le stockage à -20C

\*\*\* Les 20ul contiennent 0,1% de BSA.

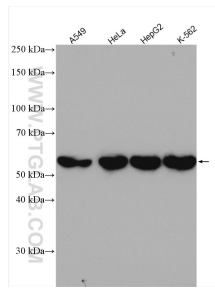
For technical support and original validation data for this product please contact:

T: 1 (888) 4PTGLAB (1-888-478-4522) (toll free in USA), or 1(312) 455-8498 (outside USA)

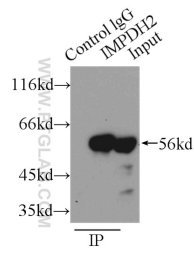
E: proteintech@ptglab.com  
W: ptglab.com

This product is exclusively available under Proteintech Group brand and is not available to purchase from any other manufacturer.

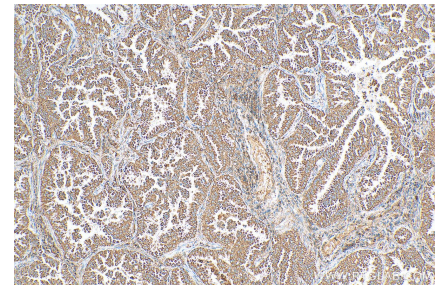
## Données de validation sélectionnées



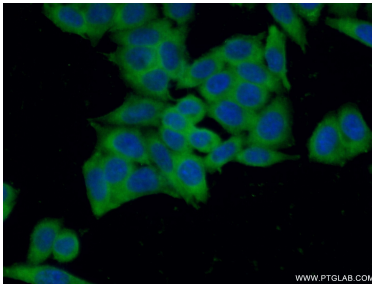
Various lysates were subjected to SDS PAGE followed by western blot with 12948-1-AP (IMPDH2 antibody) at dilution of 1:3000 incubated at room temperature for 1.5 hours.



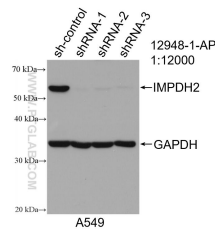
IP Result of anti-IMPDH2 (IP:12948-1-AP, 3ug; Detection:12948-1-AP 1:800) with K-562 cells lysate 4000ug.



Immunohistochemical analysis of paraffin-embedded human lung cancer tissue slide using 12948-1-AP (IMPDH2 antibody) at dilution of 1:200 (under 10x lens). Heat mediated antigen retrieval with Tris-EDTA buffer (pH 9.0).



Immunofluorescent analysis of (-20°C Ethanol) fixed HeLa cells using 12948-1-AP (IMPDH2 antibody) at dilution of 1:50 and Alexa Fluor 488-conjugated AffiniPure Goat Anti-Rabbit IgG(H+L).



WB result of IMPDH2 antibody (12948-1-AP; 1:12000; incubated at room temperature for 1.5 hours) with sh-Control and sh-IMPDH2 transfected A549 cells.