

À des fins de recherche uniquement

Anticorps Polyclonal de lapin anti-LIPA



Numéro de catalogue: 12956-1-AP

Phare

6 Publications

Informations de base

Numéro de catalogue: 12956-1-AP	Numéro d'acquisition GenBank: BC012287	Méthode de purification: Purification par affinité contre l'antigène
Taille: 150ul, Concentration: 300 µg/ml by Nanodrop and 213 µg/ml by Bradford method using BSA as the standard;	Identification du gène (NCBI): 3988	Dilutions recommandées: WB 1:500-1:2000 IHC 1:50-1:500
Hôte: Lapin	Nom complet: lipase A, lysosomal acid, cholesterol esterase	
Isotype: IgG	MW calculé 399 aa, 45 kDa	
Immunogen Catalog Number: AG3627	MW observés: 45 kDa	

Applications

Applications testées:

IHC, WB, ELISA

Demandes citées:

IF, IHC, IP, WB

Spécificité de l'espèce:

Humain, rat, souris

Espèces citées:

Humain, rat, souris

Remarque-IHC: il est suggéré de démasquer l'antigène avec un tampon de TE buffer pH 9,0; (*) A défaut, 'le démasquage de l'antigène peut être effectué avec un tampon citrate pH 6,0.

Contrôles positifs:

WB : cellules HT-1080, cellules HEK-293, cellules HeLa, cellules HepG2, cellules NIH/3T3, cellules RAW 264.7

IHC : tissu de cancer du côlon humain,

Informations générales

Human acid lipase/cholesteryl esterase (LIPA) is a 46-kDa glycoprotein required for the lysosomal hydrolysis of cholesteryl esters and triglycerides that cells acquire through the receptor-mediated endocytosis of low-density lipoproteins (PMID:8432549). Defects in LIPA are the cause of Wolman disease (WOD) (PMID:8146180) and cholesteryl ester storage disease (CESD) (PMID:9633819). It has 2 isoforms produced by alternative splicing with the molecular weight of 45 kDa and 39 kDa. The full length protein has a signal peptide and several glycosylation sites.

Publications notables

Autrice	Pubmed ID	Journal	Application
Yangjun Yang	36432597	Nutrients	WB
Simone Carotti	34795230	Cell Death Dis	WB, IHC, IF, IP
Lin An	35679793	Phytomedicine	WB

Stockage

Stockage:

Stocker à -20°C. Stable pendant un an après l'expédition.

Tampon de stockage:

PBS avec azoture de sodium à 0,02 % et glycérol à 50 % pH 7,3

L'aliquotage n'est pas nécessaire pour le stockage à -20°C

*** Les 20ul contiennent 0,1% de BSA.

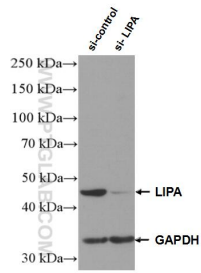
For technical support and original validation data for this product please contact:

T: 1 (888) 4PTGLAB (1-888-478-4522) (toll free in USA), or 1(312) 455-8498 (outside USA)

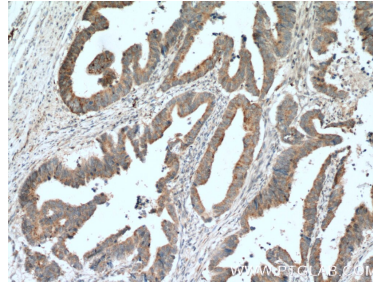
E: proteintech@ptglab.com
W: ptglab.com

This product is exclusively available under Proteintech Group brand and is not available to purchase from any other manufacturer.

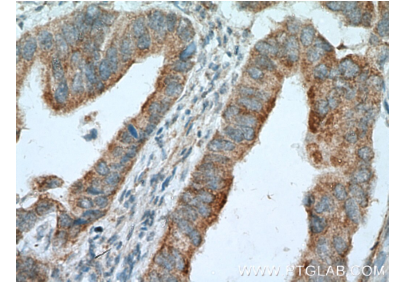
Données de validation sélectionnées



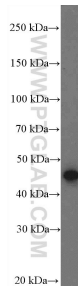
WB result of LIPA antibody (12956-1-AP; 1:1000; incubated at room temperature for 1.5 hours) with sh-Control and sh-LIPA transfected HEK-293 cells.



Immunohistochemical analysis of paraffin-embedded human colon cancer tissue slide using 12956-1-AP (LIPA Antibody) at dilution of 1:200 (under 10x lens). Heat mediated antigen retrieval with Tris-EDTA buffer (pH 9.0).



Immunohistochemical analysis of paraffin-embedded human colon cancer tissue slide using 12956-1-AP (LIPA Antibody) at dilution of 1:200 (under 40x lens). Heat mediated antigen retrieval with Tris-EDTA buffer (pH 9.0).



HT-1080 cells were subjected to SDS PAGE followed by western blot with 12956-1-AP (LIPA Antibody) at dilution of 1:1000 incubated at room temperature for 1.5 hours.