

À des fins de recherche uniquement

# Anticorps Polyclonal de lapin anti-DRP1 (C-terminal)



Numéro de catalogue: 12957-1-AP

Phare

154 Publications

## Informations de base

Numéro de catalogue:  
12957-1-AP

Taille:  
150ul, Concentration: 700 µg/ml by  
Nanodrop;

Hôte:  
Lapin

Isotype:  
IgG

Immunogen Catalog Number:  
AG3644

Numéro d'acquisition GenBank:  
BC024590

Identification du gène (NCBI):  
10059

Nom complet:  
dynamin 1-like

MW calculé  
710 aa, 79 kDa

MW observés:  
75-80 kDa

Méthode de purification:  
Purification par affinité contre  
l'antigène

Dilutions recommandées:  
WB 1:2000-1:10000  
IP 0.5-4.0 ug for IP and 1:500-1:2000  
for WB  
IHC 1:50-1:500  
IF 1:50-1:500

## Applications

Applications testées:  
FC, IF, IHC, IP, WB, ELISA

Demandes citées:  
CoIP, IF, IHC, IP, WB

Spécificité de l'espèce:  
Humain, rat, souris

Espèces citées:  
bovin, Humain, poisson-zèbre, poulet, rat, singe, souris,  
Hamster

**Remarque-IHC: il est suggéré de démasquer  
l'antigène avec un tampon de TE buffer pH  
9,0; (\*) À défaut, 'le démasquage de  
l'antigène peut être 'effectué avec un  
tampon citrate pH 6,0.**

Contrôles positifs:

WB : tissu cérébral de souris, cellules A549, cellules DU  
145, cellules HCT 116, cellules HeLa, cellules HepG2,  
cellules NIH/3T3, tissu cérébral de rat

IP : tissu cérébral de souris,

IHC : tissu de cervelet de souris,

IF : cellules HeLa,

## Informations générales

DNM1L(Dynamine-1-like protein), also known as dynamin-related protein 1 (DRP1), belongs to the dynamin family of large GTPases that mediate membrane remodeling during a variety of cellular processes. DNM1L has an important role in the division of growing mitochondria and peroxisomes and also mediates outer mitochondrial membrane fission in mammalian cells. DNM1L is ubiquitously expressed with abundant expression in skeletal muscle, heart, kidney and brain. Variable isoforms of DNM1L have been reported in a tissue-specific manner due to the alternative splicing.

## Publications notables

Autrice	Pubmed ID	Journal	Application
Wenliang Zhang	34580406	Sci Rep	WB
Xinyao Tian	36163170	Cell Death Dis	WB
Jinghua Du	29158819	Theranostics	WB

## Stockage

Stockage:

Stocker à -20°C. Stable pendant un an après l'expédition.

Tampon de stockage:

PBS avec azoture de sodium à 0,02 % et glycérol à 50 % pH 7,3

L'aliquotage n'est pas nécessaire pour le stockage à -20C

\*\*\* Les 20ul contiennent 0,1% de BSA.

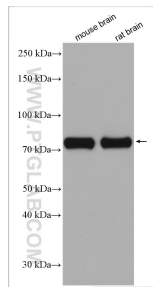
For technical support and original validation data for this product please contact:

T: 1 (888) 4PTGLAB (1-888-478-4522) (toll free  
in USA), or 1(312) 455-8498 (outside USA)

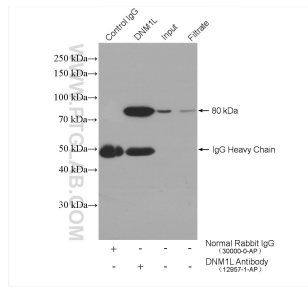
E: proteintech@ptglab.com  
W: ptglab.com

This product is exclusively available under Proteintech Group brand and is not available to purchase from any other manufacturer.

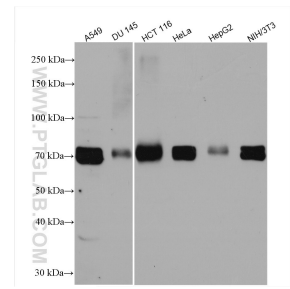
## Données de validation sélectionnées



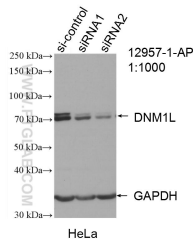
Various lysates were subjected to SDS PAGE followed by western blot with 12957-1-AP (DRP1 (C-terminal) antibody) at dilution of 1:5000 incubated at room temperature for 1.5 hours.



IP result of anti-DRP1 (C-terminal)(IP:12957-1-AP, 4ug; Detection:12957-1-AP 1:1000) with mouse brain tissue lysate 2400 ug.



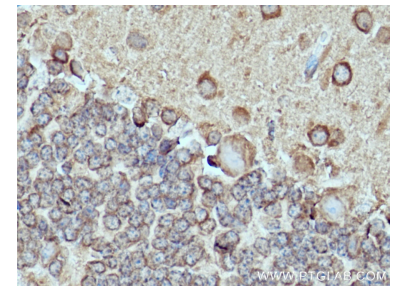
Various lysates were subjected to SDS PAGE followed by western blot with 12957-1-AP (DRP1 (C-terminal) antibody) at dilution of 1:5000 incubated at room temperature for 1.5 hours.



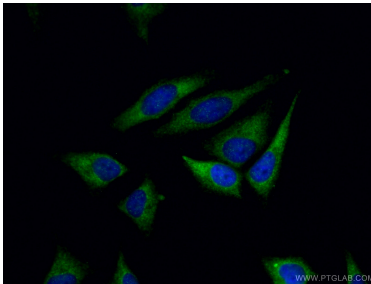
WB result of DRP1 (C-terminal) antibody (12957-1-AP; 1:1000; incubated at room temperature for 1.5 hours) with sh-Control and sh-DRP1 (C-terminal) transfected HeLa cells.



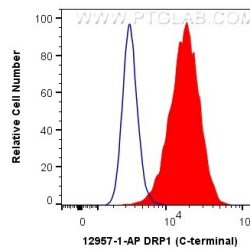
Immunohistochemical analysis of paraffin-embedded mouse cerebellum tissue slide using 12957-1-AP (DRP1 (C-terminal) antibody) at dilution of 1:200 (under 10x lens). Heat mediated antigen retrieval with Tris-EDTA buffer (pH 9.0).



Immunohistochemical analysis of paraffin-embedded mouse cerebellum tissue slide using 12957-1-AP (DRP1 (C-terminal) antibody) at dilution of 1:200 (under 40x lens). Heat mediated antigen retrieval with Tris-EDTA buffer (pH 9.0).



Immunofluorescent analysis of (-20°C Ethanol) fixed HeLa cells using 12957-1-AP (DRP1 (C-terminal) antibody) at dilution of 1:50 and CoraLite488-Conjugated AffiniPure Goat Anti-Rabbit IgG(H+L).



$1 \times 10^6$  HeLa cells were intracellularly stained with 0.4 ug Anti-Human DRP1 (C-terminal) (12957-1-AP) and CoraLite®488-Conjugated AffiniPure Goat Anti-Rabbit IgG(H+L) at dilution 1:1000 (red), or 0.4 ug Control Antibody. Cells were fixed with 4% PFA and permeabilized with Flow Cytometry Perm Buffer (PF0011-C).