

À des fins de recherche uniquement

Anticorps Polyclonal de lapin anti-RASGRF1



Numéro de catalogue: 12958-1-AP

6 Publications

Informations de base

Numéro de catalogue:
12958-1-AP

Taille:
150ul, Concentration: 220 µg/ml by Nanodrop and 213 µg/ml by Bradford method using BSA as the standard;

Hôte:
Lapin

Isotype:
IgG

Immunogen Catalog Number:
AG4072

Numéro d'acquisition GenBank:
BC040275

Identification du gène (NCBI):
5923

Nom complet:
Ras protein-specific guanine nucleotide-releasing factor 1

MW calculé

134 kDa

MW observés:

130-140 kDa

Méthode de purification:

Purification par affinité contre l'antigène

Dilutions recommandées:

WB 1:500-1:1000

IP 0.5-4.0 µg for IP and 1:500-1:1000 for WB

Applications

Applications testées:

IP, WB, ELISA

Demandes citées:

IHC, WB

Spécificité de l'espèce:

rat, souris

Espèces citées:

rat, souris

Contrôles positifs:

WB : tissu cérébral de rat,

IP : tissu cérébral de rat,

Informations générales

RasGRF1, a member of calmodulin-activated guanine-nucleotide exchange factors (GEFs), highly expressed at the synaptic junctions of the central nervous system (CNS). It is similar to the *Saccharomyces cerevisiae* CDC25. RASGRF1 serves as an *in vivo* activator for H-RAS and members of the R-RAS and RAC subfamilies. Several studies have shown that RasGRF1 also binds to microtubules and participate in the regulation of neurite outgrowth. RasGRF1 has been implicated in neuronal excitability. The studies of the similar gene in mouse suggested that the Ras-GEF activity of this protein in brain can be activated by Ca²⁺ influx, muscarinic receptors, and G protein beta-gamma subunit. Mouse studies also indicated that the Ras-GEF signaling pathway mediated by this protein may be important for long-term memory.

Publications notables

Autrice	Pubmed ID	Journal	Application
Bo Teng	28335497	Molecules	WB
Wei Liao	24597981	Leuk Lymphoma	
Wei Liao	27458535	Cancer Biol Med	WB

Stockage

Stockage:

Stocker à -20°C. Stable pendant un an après l'expédition.

Tampon de stockage:

PBS avec azoture de sodium à 0,02 % et glycérol à 50 % pH 7,3

L'aliquotage n'est pas nécessaire pour le stockage à -20C

*** Les 20ul contiennent 0,1% de BSA.

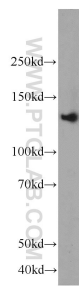
For technical support and original validation data for this product please contact:

T: 1 (888) 4PTGLAB (1-888-478-4522) (toll free in USA), or 1(312) 455-8498 (outside USA)

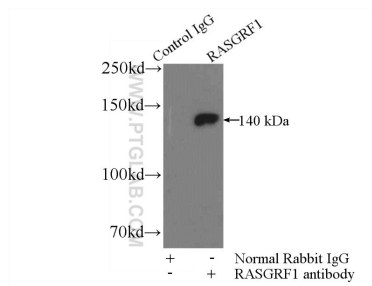
E: proteintech@ptglab.com
W: ptglab.com

This product is exclusively available under Proteintech Group brand and is not available to purchase from any other manufacturer.

Données de validation sélectionnées



rat brain tissue were subjected to SDS PAGE followed by western blot with 12958-1-AP (RASGRF1 antibody) at dilution of 1:600 incubated at room temperature for 1.5 hours.



IP Result of anti-RASGRF1 (IP:12958-1-AP, 4ug; Detection:12958-1-AP 1:500) with rat brain tissue lysate 4000ug.