

À des fins de recherche uniquement

Anticorps Polyclonal de lapin anti-PPM1A



Numéro de catalogue: 12961-1-AP

3 Publications

Informations de base

| | | |
|--|---|--|
| Numéro de catalogue: 12961-1-AP | Numéro d'acquisition GenBank: BC026691 | Méthode de purification: Purification par affinité contre l'antigène |
| Taille: 150ul , Concentration: 900 µg/ml by Nanodrop and 333 µg/ml by Bradford method using BSA as the standard; | Identification du gène (NCBI): 5494 | Dilutions recommandées: WB 1:1000-1:8000 IHC 1:500-1:2000 |
| Hôte: Lapin | Nom complet: protein phosphatase 1A (formerly 2C), magnesium-dependent, alpha isoform | |
| Isotype: IgG | MW calculé 382 aa, 42 kDa | |
| Immunogen Catalog Number: AG3645 | MW observés: 42 kDa | |

Applications

Applications testées:

IHC, WB, ELISA

Demandes citées:

Cell treatment, IF, WB

Spécificité de l'espèce:

Humain, rat, souris

Espèces citées:

rat, souris

Remarque-IHC: il est suggéré de démasquer l'antigène avec un tampon de TE buffer pH 9,0; (*) A défaut, 'le démasquage de l'antigène peut être 'effectué avec un tampon citrate pH 6,0.

Contrôles positifs:

WB : cellules Jurkat, cellules HepG2, cellules K-562, tissu hépatique humain, tissu rénal de rat, tissu rénal de souris

IHC : tissu de cancer du sein humain, tissu de carcinome urothélial humain

Informations générales

PPM1A (Protein phosphatase 1A) is also named as PPPM1A and belongs to the PP2C family. It is a serine/threonine protein phosphatase that is essential for regulating cellular stress responses in eukaryotes. PPM1A plays an important role in tumor suppression and that it negatively controls many signaling pathways which are critical for trophoblast invasion. (PMID:19404668). This protein distributes in both the cytoplasm and nucleus of mammalian cells (PMID:9003755). It has 2 isoforms produced by alternative splicing.

Publications notables

| Autrice | Pubmed ID | Journal | Application |
|-------------------|-----------|-----------------|----------------|
| Haibin Tian | 36185374 | iScience | IF |
| Aozora Nagaoka | 35491170 | Biol Pharm Bull | WB |
| Katyayane Neopane | 36543129 | Cell Rep | Cell treatment |

Stockage

Stockage:

Stocker à -20°C. Stable pendant un an après l'expédition.

Tampon de stockage:

PBS avec azoture de sodium à 0,02 % et glycérol à 50 % pH 7,3

L'aliquotage n'est pas nécessaire pour le stockage à -20C

*** Les 20ul contiennent 0,1% de BSA.

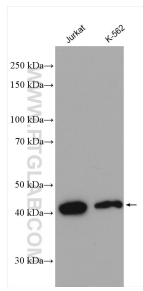
For technical support and original validation data for this product please contact:

T: 1 (888) 4PTGLAB (1-888-478-4522) (toll free in USA), or 1(312) 455-8498 (outside USA)

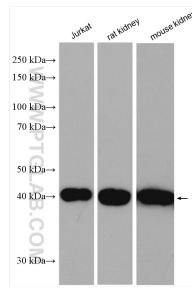
E: proteintech@ptglab.com
W: ptglab.com

This product is exclusively available under Proteintech Group brand and is not available to purchase from any other manufacturer.

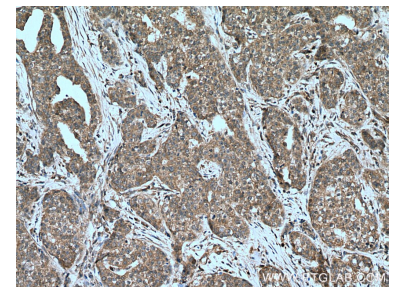
Données de validation sélectionnées



Various lysates were subjected to SDS PAGE followed by western blot with 12961-1-AP (PPM1A antibody) at dilution of 1:4000 incubated at room temperature for 1.5 hours.



Various lysates were subjected to SDS PAGE followed by western blot with 12961-1-AP (PPM1A antibody) at dilution of 1:2000 incubated at room temperature for 1.5 hours.



Immunohistochemical analysis of paraffin-embedded human breast cancer tissue slide using 12961-1-AP (PPM1A antibody) at dilution of 1:1000 (under 10x lens). Heat mediated antigen retrieval with Tris-EDTA buffer (pH 9.0).