

À des fins de recherche uniquement

# Anticorps Polyclonal de lapin anti-CHAD



Numéro de catalogue: 12963-1-AP

1 Publications

## Informations de base

Numéro de catalogue:  
12963-1-AP

Taille:  
150ul, Concentration: 153 µg/ml by Nanodrop and 153 µg/ml by Bradford method using BSA as the standard;

Hôte:  
Lapin

Isotype:  
IgG

Immunogen Catalog Number:  
AG4077

Numéro d'acquisition GenBank:  
BC036360

Identification du gène (NCBI):  
1101

Nom complet:  
chondroadherin

MW calculé  
359 aa, 40.5 kDa

MW observés:  
41 kDa

Méthode de purification:  
Purification par affinité contre l'antigène

Dilutions recommandées:  
WB 1:500-1:1000

## Applications

Applications testées:  
WB, ELISA

Demandes citées:  
WB

Spécificité de l'espèce:  
Humain, rat, souris

Espèces citées:  
Humain

Contrôles positifs:

WB : cellules HeLa, cellules Jurkat, cellules MCF-7

## Informations générales

Chondroadherin (CHAD), also known as cartilage leucine-rich protein, is a prominent noncollagenous extracellular protein in cartilage. It was first isolated from bovine cartilage. The primary structure of CHAD shows that it belongs to the family of leucine-rich repeat (LRR) proteins. It is expressed at high levels in certain zones of cartilage and also has been detected in bone, tendon, bone marrow, and chondrosarcoma cells. CHAD promotes attachment of chondrocytes, fibroblasts, and osteoblasts, mediated via the integrin alpha2beta1. It has also been shown to bind to collagen type II and both collagen type II and chondroadherin interact with integrin alpha2beta1. Besides, CHAD may play an important role in the regulation of chondrocyte growth and proliferation.

## Publications notables

Autrice	Pubmed ID	Journal	Application
Bing Xin	33125687	Reprod Sci	WB

## Stockage

Stockage:

Stocker à -20°C. Stable pendant un an après l'expédition.

Tampon de stockage:

PBS avec azoture de sodium à 0,02 % et glycérol à 50 % pH 7,3

L'aliquotage n'est pas nécessaire pour le stockage à -20C

\*\*\* Les 20ul contiennent 0,1% de BSA.

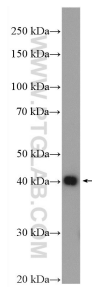
For technical support and original validation data for this product please contact:

T: 1 (888) 4PTGLAB (1-888-478-4522) (toll free in USA), or 1(312) 455-8498 (outside USA)

E: proteintech@ptglab.com  
W: ptglab.com

This product is exclusively available under Proteintech Group brand and is not available to purchase from any other manufacturer.

## Données de validation sélectionnées



HeLa cells were subjected to SDS PAGE followed by western blot with 12963-1-AP (CHAD antibody) at dilution of 1:600 incubated at room temperature for 1.5 hours.