

À des fins de recherche uniquement

Anticorps Polyclonal de lapin anti-CPT1C-specific



Numéro de catalogue: 12969-1-AP

9 Publications

Informations de base

Numéro de catalogue:
12969-1-AP

Taille:
150ul, Concentration: 550 µg/ml by Nanodrop and 307 µg/ml by Bradford method using BSA as the standard;

Hôte:
Lapin

Isotype:
IgG

Immunogen Catalog Number:
AG3649

Numéro d'acquisition GenBank:
BC029104

Identification du gène (NCBI):
126129

Nom complet:
carnitine palmitoyltransferase 1C

MW calculé
792 aa, 90 kDa

MW observés:
70-82 kDa

Méthode de purification:
Purification par affinité contre l'antigène

Dilutions recommandées:
WB 1:500-1:1000
IP 0.5-4.0 ug for IP and 1:500-1:1000 for WB
IHC 1:50-1:500

Applications

Applications testées:
IHC, IP, WB, ELISA

Demandes citées:
IF, WB

Spécificité de l'espèce:
Humain, rat, souris

Espèces citées:
Humain, rat

Remarque-IHC: il est suggéré de démasquer l'antigène avec un tampon de TE buffer pH 9,0; (*) A défaut, 'le démasquage de l'antigène peut être 'effectué avec un tampon citrate pH 6,0.

Contrôles positifs:

WB : tissu cérébral de souris, cellules HeLa, tissu cérébral de rat

IP : tissu testiculaire de souris,

IHC : tissu de gliome humain, tissu cérébral humain, tissu testiculaire humain

Informations générales

CPT1C belongs to the carnitine/choline acetyltransferase family. Carnitine palmitoyltransferase (CPT) deficiencies are common disorders of mitochondrial fatty acid oxidation. The CPT system is made up of two separate proteins located in the outer (CPT1) and inner (CPT2) mitochondrial membranes. CPT1C is an active forms of related brain-type carnitine palmitoyltransferase I. CPT1C may be a regulated target of malonyl-CoA that relays the "malonyl-CoA signal" in hypothalamic neurons that express the orexigenic and anorexigenic neuropeptides that regulate food intake and peripheral energy expenditure (PMID: 17018521). This antibody specifically recognizes CPT1C, and does not cross-react with CPT1A or CPT1B.

Publications notables

Autrice	Pubmed ID	Journal	Application
De Huang	25242319	Cell Rep	WB
Carlo Rinaldi	25751282	JAMA Neurol	IF
Brenda Raud	30043753	Cell Metab	WB

Stockage

Stockage:

Stocker à -20°C. Stable pendant un an après l'expédition.

Tampon de stockage:

PBS avec azoture de sodium à 0,02 % et glycérol à 50 % pH 7,3

L'aliquotage n'est pas nécessaire pour le stockage à -20C

*** Les 20ul contiennent 0,1% de BSA.

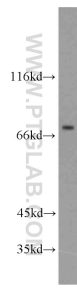
For technical support and original validation data for this product please contact:

T: 1 (888) 4PTGLAB (1-888-478-4522) (toll free in USA), or 1(312) 455-8498 (outside USA)

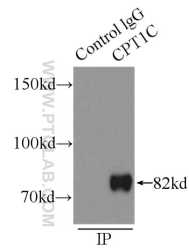
E: proteintech@ptglab.com
W: ptglab.com

This product is exclusively available under Proteintech Group brand and is not available to purchase from any other manufacturer.

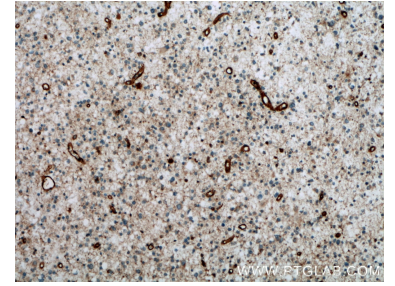
Données de validation sélectionnées



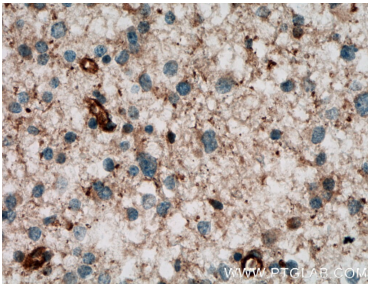
mouse brain tissue were subjected to SDS PAGE followed by western blot with 12969-1-AP (CPT1C-specific antibody) at dilution of 1:500 incubated at room temperature for 1.5 hours.



IP Result of anti-CPT1C-specific (IP:12969-1-AP, 5ug; Detection:12969-1-AP 1:500) with mouse testis tissue lysate 8000ug.



Immunohistochemical analysis of paraffin-embedded human gliomas tissue slide using 12969-1-AP (CPT1C-specific antibody) at dilution of 1:200 (under 10x lens. Heat mediated antigen retrieval with Tris-EDTA buffer (pH 9.0).



Immunohistochemical analysis of paraffin-embedded human gliomas tissue slide using 12969-1-AP (CPT1C-specific antibody) at dilution of 1:200 (under 40x lens. Heat mediated antigen retrieval with Tris-EDTA buffer (pH 9.0).