

À des fins de recherche uniquement

# Anticorps Polyclonal de lapin anti-TPTE



Numéro de catalogue: 12982-1-AP

## Informations de base

<b>Numéro de catalogue:</b> 12982-1-AP	<b>Numéro d'acquisition GenBank:</b> BC028719	<b>Méthode de purification:</b> Purification par affinité contre l'antigène
<b>Taille:</b> 150ul , Concentration: 260 µg/ml by Nanodrop and 247 µg/ml by Bradford method using BSA as the standard;	<b>Identification du gène (NCBI):</b> 7179	<b>Dilutions recommandées:</b> WB 1:500-1:2000 IHC 1:20-1:200 IF 1:10-1:100
<b>Hôte:</b> Lapin	<b>Nom complet:</b> transmembrane phosphatase with tensin homology	
<b>Isotype:</b> IgG	<b>MW calculé</b> 62 kDa, 64 kDa	
<b>Immunogen Catalog Number:</b> AG3606	<b>MW observés:</b> 62 kDa, 64 kDa	

## Applications

<b>Applications testées:</b> IF, IHC, WB, ELISA	<b>Contrôles positifs:</b> WB : cellules HepG2, cellules BxPC-3, cellules HEK-293, tissu testiculaire de souris, tissu testiculaire humain IHC : tissu testiculaire humain, IF : cellules BxPC-3,
<b>Spécificité de l'espèce:</b> Humain	
<b>Remarque-IHC: il est suggéré de démasquer l'antigène avec un tampon de TE buffer pH 9,0; (*) À défaut, 'le démasquage de l'antigène peut être 'effectué avec un tampon citrate pH 6,0.</b>	

## Informations générales

TPTE(Transmembrane phosphatase with tensin homology) is also named as CT44, BJ-HCC-5 and belongs to the non receptor class of the protein-tyrosine phosphatase family. The gene encodes a predicted polypeptide of 551 amino acids with at least 2 potential transmembrane domains and a tyrosine phosphatase motif. TPTE may be involved in the signal transduction pathways of the endocrine or spermatogenic function of the testis(PMID:10598804). It is putatively involved in linking the cell membrane to cytoskeleton. This protein is very similar in sequence to PTEN through the phosphatase and C2 domains, but lacks a PDZ binding motif and an extensively phosphorylated C-terminal tail(PMID:17240336). It has 4 isoforms produced by alternative splicing.

## Stockage

**Stockage:**  
Stocker à -20°C. Stable pendant un an après l'expédition.  
**Tampon de stockage:**  
PBS avec azoture de sodium à 0,02 % et glycérol à 50 % pH 7,3  
L'aliquotage n'est pas nécessaire pour le stockage à -20C

\*\*\* Les 20ul contiennent 0,1% de BSA.

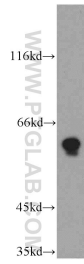
For technical support and original validation data for this product please contact:

T: 1 (888) 4PTGLAB (1-888-478-4522) (toll free in USA), or 1(312) 455-8498 (outside USA)

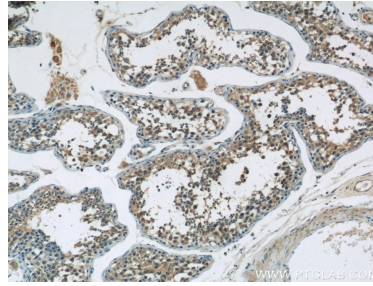
E: proteintech@ptglab.com  
W: ptglab.com

This product is exclusively available under Proteintech Group brand and is not available to purchase from any other manufacturer.

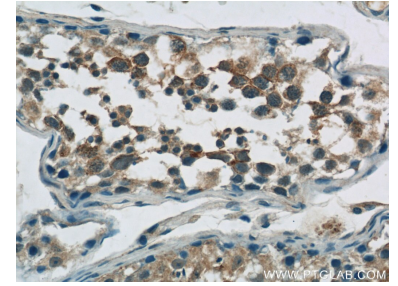
## Données de validation sélectionnées



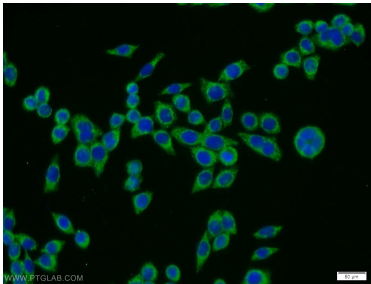
HepG2 cells were subjected to SDS PAGE followed by western blot with 12982-1-AP (TPTE antibody) at dilution of 1:500 incubated at room temperature for 1.5 hours.



Immunohistochemical analysis of paraffin-embedded human testis tissue slide using 12982-1-AP (TPTE Antibody) at dilution of 1:50 (under 10x lens).



Immunohistochemical analysis of paraffin-embedded human testis tissue slide using 12982-1-AP (TPTE Antibody) at dilution of 1:50 (under 40x lens).



Immunofluorescent analysis of BxPC-3 cells using 12982-1-AP (TPTE antibody) at dilution of 1:25 and Alexa Fluor 488-conjugated AffiniPure Goat Anti-Rabbit IgG(H+L).