

À des fins de recherche uniquement

Anticorps Polyclonal de lapin anti-Lamin B1



Numéro de catalogue: 12987-1-AP

859 Publications

Informations de base

Numéro de catalogue:
12987-1-AP

Taille:
150ul, Concentration: 450 µg/ml by
Nanodrop;

Hôte:
Lapin

Isotype:
IgG

Immunogen Catalog Number:
AG3631

Numéro d'acquisition GenBank:
BC012295

Identification du gène (NCBI):
4001

Nom complet:
lamin B1

MW calculé
66 kDa

MW observés:
66-70 kDa

Méthode de purification:
Purification par affinité contre
l'antigène

Dilutions recommandées:
WB 1:5000-1:50000
IP 0.5-4.0 ug for IP and 1:500-1:2000
for WB
IHC 1:500-1:2000
IF 1:200-1:800

Applications

Applications testées:
FC, IF, IHC, IP, WB, ELISA

Demandes citées:
ChIP, FC, IF, IHC, WB

Spécificité de l'espèce:
Humain, rat, souris

Espèces citées:
canin, Humain, porc, poulet, rat, souris, Hamster,
Bombyx Mori

Remarque-IHC: il est suggéré de démasquer l'antigène avec un tampon de TE buffer pH 9.0; (*) A défaut, 'le démasquage de l'antigène peut être effectué avec un tampon citrate pH 6,0.

Contrôles positifs:

WB : cellules HeLa, cellules HepG2, cellules Jurkat, cellules K-562, cellules MCF-7, cellules NIH/3T3, cellules RAW 264.7, cellules SH-SY5Y, cellules U-937, cellules Y79, tissu oculaire de souris, tissu pancréatique de souris, tissu pulmonaire de souris, tissu rénal de souris, tissu splénique de souris

IP : cellules HeLa,

IHC : tissu cardiaque de souris, tissu de cancer du côlon humain, tissu de cancer du foie humain, tissu rénal de souris, tissu rénal humain

IF : cellules HepG2, cellules NIH/3T3, tissu de cancer de la peau humain

Informations générales

Lamins are components of the nuclear lamina, a fibrous layer on the nucleoplasmic side of the inner nuclear membrane, which is thought to provide a framework for the nuclear envelope and may also interact with chromatin. The nuclear lamina consists of a two-dimensional matrix of proteins located next to the inner nuclear membrane. The lamin family of proteins make up the matrix and are highly conserved in evolution. During mitosis, the lamina matrix is reversibly disassembled as the lamin proteins are phosphorylated. Vertebrate lamins consist of two types, A and B. This gene encodes one of the two B type proteins, B1. Expression of uncleavable mutant lamin A or B caused significant delays in the onset of chromatin condensation and nuclear shrinkage during apoptosis (PMID:11953316). This protein is not suitable for samples where the nuclear envelope has been removed.

Publications notables

Autrice	Pubmed ID	Journal	Application
Liqun Xu	34638868	Int J Mol Sci	WB
Kaili Liu	33007707	Transl Oncol	WB
Praveen K Dubey	34581943	Mol Cell Biochem	WB

Stockage

Stockage:

Stocker à -20°C. Stable pendant un an après l'expédition.

Tampon de stockage:

PBS avec azoture de sodium à 0,02 % et glycérol à 50 % pH 7,3

L'aliquotage n'est pas nécessaire pour le stockage à -20C

*** Les 20ul contiennent 0,1% de BSA.

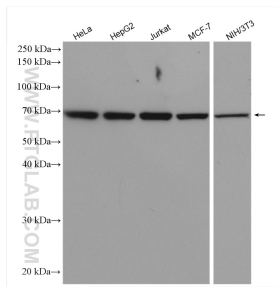
For technical support and original validation data for this product please contact:

T: 1 (888) 4PTGLAB (1-888-478-4522) (toll free in USA), or 1(312) 455-8498 (outside USA)

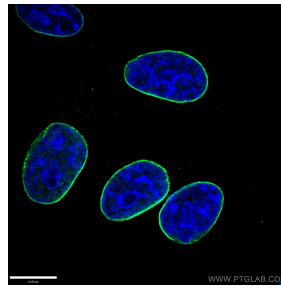
E: proteintech@ptglab.com
W: ptglab.com

This product is exclusively available under Proteintech Group brand and is not available to purchase from any other manufacturer.

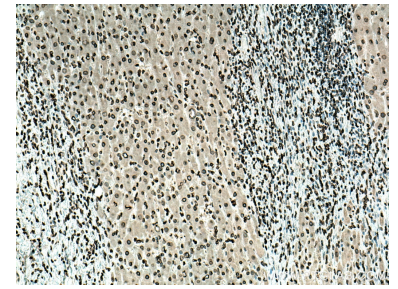
Données de validation sélectionnées



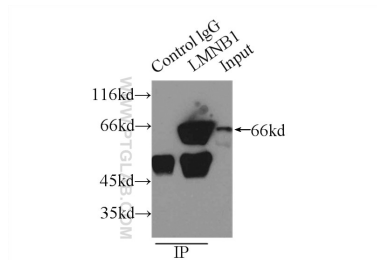
Various lysates were subjected to SDS PAGE followed by western blot with 12987-1-AP (Lamin B1 antibody) at dilution of 1:20000 incubated at room temperature for 1.5 hours.



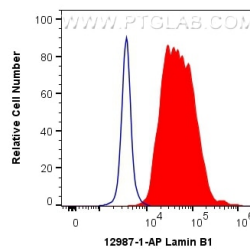
Immunofluorescent analysis of (-20°C Ethanol) fixed HepG2 cells using 12987-1-AP (Lamin B1 antibody) at dilution of 1:200 and Alexa Fluor 488-conjugated AffiniPure Goat Anti-Rabbit IgG(H+L).



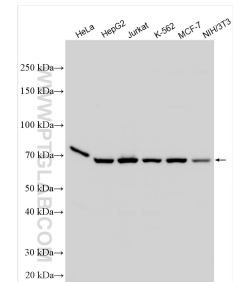
Immunohistochemical analysis of paraffin-embedded human liver cancer tissue slide using 12987-1-AP (Lamin B1 antibody) at dilution of 1:100 (under 10x lens). Heat mediated antigen retrieval with Tris-EDTA buffer (pH 9.0).



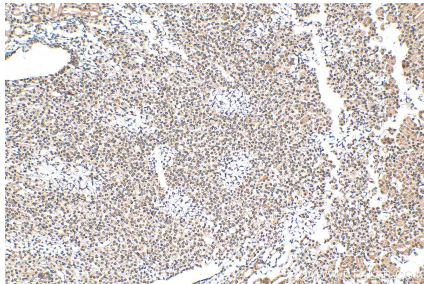
IP Result of anti-LMN B1 (IP:12987-1-AP, 3ug; Detection:12987-1-AP 1:1000) with HeLa cells lysate 2500ug.



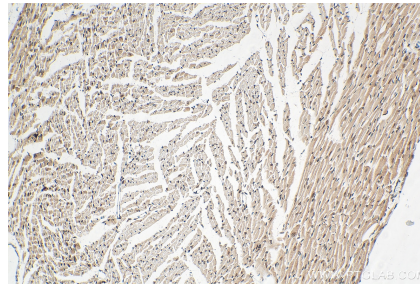
1X10⁶ HEK-293 cells were intracellularly stained with 0.4 ug Anti-Human Lamin B1 (12987-1-AP) and CoraLite®488-Conjugated AffiniPure Goat Anti-Rabbit IgG(H+L) at dilution 1:1000 (red), or 0.4 ug Isotype Control. Cells were fixed with 4% PFA and permeabilized with Flow Cytometry Perm Buffer (PF00011-C).



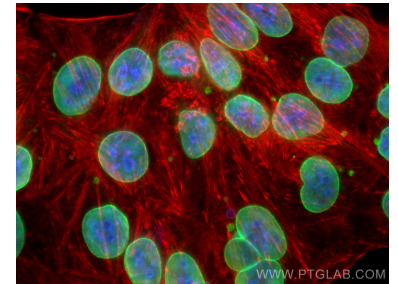
Various lysates were subjected to SDS PAGE followed by western blot with 12987-1-AP (Lamin B1 antibody) at dilution of 1:20000 incubated at room temperature for 1.5 hours.



Immunohistochemical analysis of paraffin-embedded mouse kidney tissue slide using 12987-1-AP (Lamin B1 antibody) at dilution of 1:1000 (under 10x lens). Heat mediated antigen retrieval with Tris-EDTA buffer (pH 9.0).



Immunohistochemical analysis of paraffin-embedded mouse heart tissue slide using 12987-1-AP (Lamin B1 antibody) at dilution of 1:1000 (under 10x lens). Heat mediated antigen retrieval with Tris-EDTA buffer (pH 9.0).



Immunofluorescent analysis of (-20°C Ethanol) fixed HepG2 cells using Lamin B1 antibody (12987-1-AP) at dilution of 1:400 and CoraLite®488-Conjugated AffiniPure Goat Anti-Rabbit IgG(H+L), CL594-Phalloidin (red).