

À des fins de recherche uniquement

Anticorps Polyclonal de lapin anti-PGRMC1



Numéro de catalogue: 12990-1-AP

Phare

17 Publications

Informations de base

Numéro de catalogue:
12990-1-AP

Taille:
150ul, Concentration: 1000 µg/ml by
Nanodrop and 540 µg/ml by Bradford
method using BSA as the standard;

Hôte:
Lapin

Isotype:
IgG

Immunogen Catalog Number:
AG3643

Numéro d'acquisition GenBank:
BC034238

Identification du gène (NCBI):
10857

Nom complet:
progesterone receptor membrane
component 1

MW calculé
195 aa, 22 kDa

MW observés:
22-28 kDa

Méthode de purification:
Purification par affinité contre
l'antigène

Dilutions recommandées:
WB 1:500-1:2000
IP 0.5-4.0 ug for IP and 1:500-1:2000
for WB
IHC 1:50-1:500

Applications

Applications testées:
IHC, IP, WB, ELISA

Demandes citées:
IF, IHC, WB

Spécificité de l'espèce:
Humain, rat, souris

Espèces citées:
bovin, Humain, rat, souris

**Remarque-IHC: il est suggéré de démasquer
l'antigène avec un tampon de TE buffer pH
9,0; (*) A défaut, 'le démasquage de
l'antigène peut être 'effectué avec un
tampon citrate pH 6,0.**

Contrôles positifs:

WB : cellules HEK-293, cellules HepG2, cellules MCF-7,
tissu hépatique de souris, tissu ovarien de souris, tissu
rénal de souris

IP : cellules MCF-7,

IHC : tissu de cancer du col de l'utérus humain, tissu de
cancer du poumon humain, tissu de tumeur ovarienne
humain

Informations générales

Progesterone receptor membrane component 1 (PGRMC1) is a member of a multi-protein progesterone-binding complex. However, PGRMC1 shares homology with cytochrome b5-related proteins rather than hormone receptors (PMID: 18992768). It is a heme binding protein with binding sites for Src homology (SH2) and SH3 domain-containing proteins (PMID: 17583495). PGRMC1 is overexpressed in a variety of cancers, and thus represents an important biomarker for cancer progression and a potential target for anticancer drugs (PMID: 21730960). In nonmalignant tissues, PGRMC1 is highly expressed in the liver and kidney (PMID: 9705155; 20164297).

Publications notables

Autrice	Pubmed ID	Journal	Application
Guangfeng Zhao	25232020	Biol Reprod	WB
H L Cai	26485545	Transl Psychiatry	WB
Uyen B Chu	26870805	EBioMedicine	WB

Stockage

Stockage:
Stocker à -20°C. Stable pendant un an après l'expédition.

Tampon de stockage:
PBS avec azoture de sodium à 0,02 % et glycérol à 50 % pH 7,3
L'aliquotage n'est pas nécessaire pour le stockage à -20C

*** Les 20ul contiennent 0,1% de BSA.

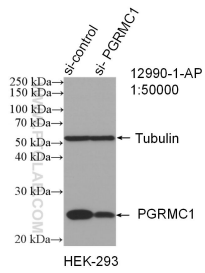
For technical support and original validation data for this product please contact:

T: 1 (888) 4PTGLAB (1-888-478-4522) (toll free
in USA), or 1(312) 455-8498 (outside USA)

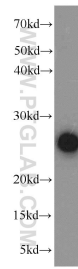
E: proteintech@ptglab.com
W: ptglab.com

This product is exclusively available under Proteintech Group brand and is not available to purchase from any other manufacturer.

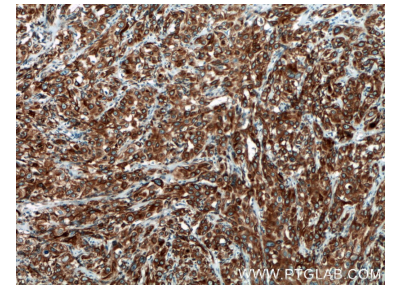
Données de validation sélectionnées



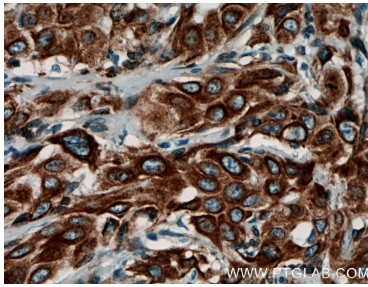
WB result of PGRMC1 antibody (12990-1-AP; 1:50000; incubated at room temperature for 1.5 hours) with sh-Control and sh-PGRMC1 transfected HEK-293 cells.



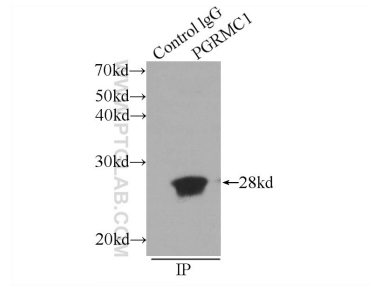
HEK-293 cells were subjected to SDS PAGE followed by western blot with 12990-1-AP (PGRMC1 antibody) at dilution of 1:1000 incubated at room temperature for 1.5 hours.



Immunohistochemical analysis of paraffin-embedded human cervical cancer tissue slide using 12990-1-AP (PGRMC1 antibody) at dilution of 1:200 (under 10x lens. Heat mediated antigen retrieval with Tris-EDTA buffer (pH 9.0).



Immunohistochemical analysis of paraffin-embedded human cervical cancer tissue slide using 12990-1-AP (PGRMC1 antibody) at dilution of 1:200 (under 40x lens. Heat mediated antigen retrieval with Tris-EDTA buffer (pH 9.0).



IP Result of anti-PGRMC1 (IP:12990-1-AP, 3ug; Detection:12990-1-AP 1:1000) with MCF-7 cells lysate 1600ug.