

À des fins de recherche uniquement

Anticorps Polyclonal de lapin anti-NF-L



Numéro de catalogue: 12998-1-AP

18 Publications

Informations de base

Numéro de catalogue:

12998-1-AP

Taille:

150ul, Concentration: 600 µg/ml by Nanodrop;

Hôte:

Lapin

Isotype:

IgG

Immunogen Catalog Number:

AG3667

Numéro d'acquisition GenBank:

BC039237

Identification du gène (NCBI):

4747

Nom complet:

neurofilament, light polypeptide

MW calculé

543 aa, 62 kDa

MW observés:

65-68 kDa, 140-160 kDa

Méthode de purification:

Purification par affinité contre l'antigène

Dilutions recommandées:

WB 1:2000-1:16000

IP 0.5-4.0 µg for IP and 1:500-1:2000 for WB

IHC 1:1000-1:4000

IF 1:200-1:800

Applications

Applications testées:

FC, IF, IHC, IP, WB, ELISA

Demandes citées:

IF, IHC, IP, WB

Spécificité de l'espèce:

Humain, rat, souris

Espèces citées:

Humain, rat, souris

Contrôles positifs:

WB : cellules SH-SY5Y, cellules C6, cellules Neuro-2a, tissu cérébral de souris

IP : tissu cérébral de souris,

IHC : tissu cérébral de souris,

IF : cellules SH-SY5Y, tissu cérébral de souris

Remarque-IHC: il est suggéré de démasquer l'antigène avec un tampon de TE buffer pH 9,0; (*) À défaut, le démasquage de l'antigène peut être effectué avec un tampon citrate pH 6,0.

Informations générales

NEFL, also named as NF68 and NF-L, belongs to the intermediate filament family. Neurofilaments are the 10 nm intermediate filaments found specifically in neurons. They are a major component of the cell's cytoskeleton, and provide support for normal axonal radial growth. Neurofilaments usually contain three intermediate filament proteins: L, M, and H, which are involved in the maintenance of neuronal caliber. The names given to the three major neurofilament subunits are based upon the apparent molecular weight of the mammalian subunits on SDS-PAGE: NF-L, 65-68 kDa; NF-M, 145-160 kDa and NF-H, 200-220 kDa. This antibody is specific to NEFL. It has a very weak reaction to NEFM.

Publications notables

Autrice	Pubmed ID	Journal	Application
Xiaoyin Liu	36246376	Front Bioeng Biotechnol	IF
Brendan P Major	33117257	Front Neurol	
Fei Yin	25374587	Neural Regen Res	WB

Stockage

Stockage:

Stocker à -20°C. Stable pendant un an après l'expédition.

Tampon de stockage:

PBS avec azoture de sodium à 0,02 % et glycérol à 50 % pH 7,3

L'aliquotage n'est pas nécessaire pour le stockage à -20C

*** Les 20ul contiennent 0,1% de BSA.

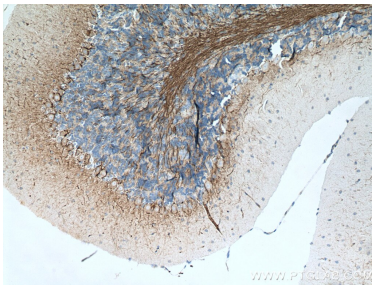
For technical support and original validation data for this product please contact:

T: 1 (888) 4PTGLAB (1-888-478-4522) (toll free in USA), or 1(312) 455-8498 (outside USA)

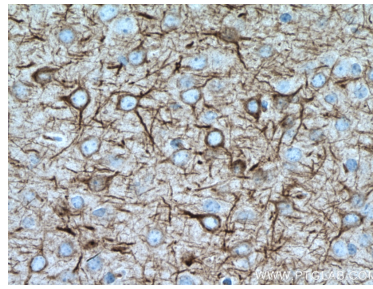
E: proteintech@ptglab.com
W: ptglab.com

This product is exclusively available under Proteintech Group brand and is not available to purchase from any other manufacturer.

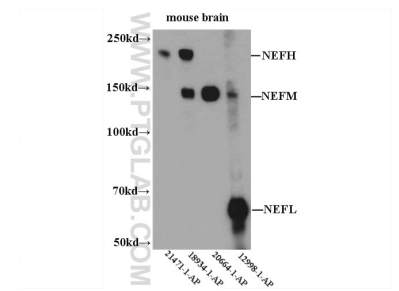
Données de validation sélectionnées



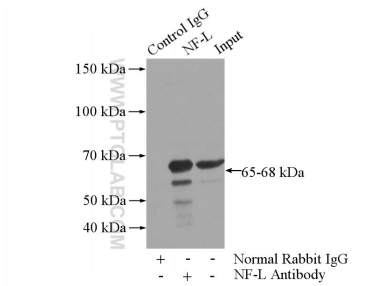
Immunohistochemical analysis of paraffin-embedded mouse brain tissue slide using 12998-1-AP (NF-L antibody) at dilution of 1:2000 (under 10x lens). Heat mediated antigen retrieval with Tris-EDTA buffer (pH 9.0).



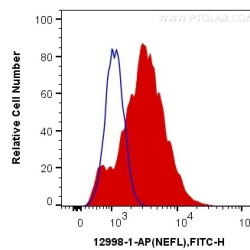
Immunohistochemical analysis of paraffin-embedded mouse brain tissue slide using 12998-1-AP (NF-L antibody) at dilution of 1:2000 (under 40x lens). Heat mediated antigen retrieval with Tris-EDTA buffer (pH 9.0).



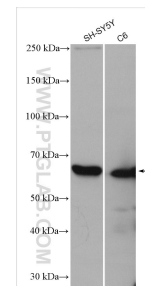
WB result of 12998-1-AP.



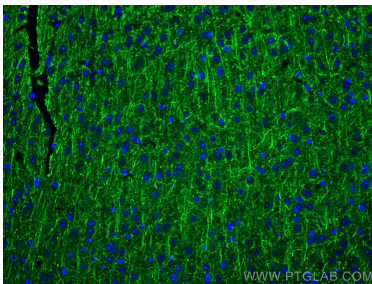
IP Result of anti-NF-L (IP:12998-1-AP, 4ug; Detection:12998-1-AP 1:1000) with mouse brain tissue lysate 4000ug.



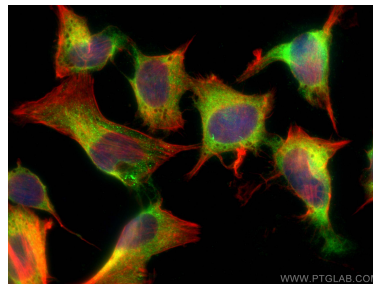
1×10^6 SH-SY5Y cells were intracellularly stained with 0.2 ug Anti-Human NF-L (12998-1-AP) and CoraLite®488-Conjugated AffiniPure Goat Anti-Rabbit IgG(H+L) at dilution 1:1000 (red), or 0.2 ug Control Antibody. Cells were fixed with 4% PFA and permeabilized with 0.1% TritonX-100.



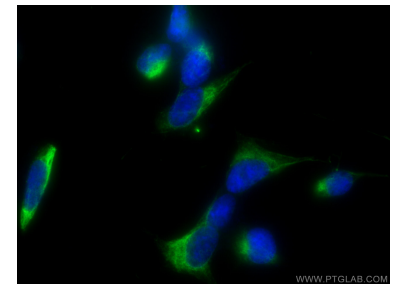
Various lysates were subjected to SDS PAGE followed by western blot with 12998-1-AP (NF-L antibody) at dilution of 1:8000 incubated at room temperature for 1.5 hours.



Immunofluorescent analysis of (4% PFA) fixed mouse brain tissue using NF-L antibody (12998-1-AP) at dilution of 1:200 and CoraLite®488-Conjugated AffiniPure Goat Anti-Rabbit IgG(H+L).



Immunofluorescent analysis of (4% PFA) fixed SH-SY5Y cells using NF-L antibody (12998-1-AP) at dilution of 1:200 and CoraLite®488-Conjugated AffiniPure Goat Anti-Rabbit IgG(H+L), CL594-Phalloidin (red).



Immunofluorescent analysis of (-20°C Ethanol) fixed SH-SY5Y cells using NF-L antibody (12998-1-AP) at dilution of 1:400 and CoraLite®488-Conjugated AffiniPure Goat Anti-Rabbit IgG(H+L).