

À des fins de recherche uniquement

# Anticorps Polyclonal de lapin anti-DOCK7



Numéro de catalogue: 13000-1-AP

3 Publications

## Informations de base

Numéro de catalogue:

13000-1-AP

Taille:

150ul, Concentration: 400 µg/ml by Nanodrop;

Hôte:

Lapin

Isotype:

IgG

Immunogen Catalog Number:

AG3671

Numéro d'acquisition GenBank:

BC016392

Identification du gène (NCBI):

85440

Nom complet:

dedicator of cytokinesis 7

MW calculé

2109 aa, 239 kDa

MW observés:

238-243 kDa

Méthode de purification:

Purification par affinité contre l'antigène

Dilutions recommandées:

WB 1:5000-1:50000

IP 0.5-4.0 ug for IP and 1:500-1:1000 for WB

IF 1:50-1:500

## Applications

Applications testées:

IF, IP, WB, ELISA

Demandes citées:

ColP, IF, IP, WB

Spécificité de l'espèce:

Humain, rat, souris

Espèces citées:

Humain, souris

Contrôles positifs:

WB : cellules HEK-293T, cellules HeLa, cellules HepG2, cellules Jurkat, cellules K-562, tissu cérébral de rat, tissu cérébral de souris, tissu cérébral humain, tissu ovarien de souris

IP : cellules HeLa,

IF : cellules HeLa,

## Informations générales

DOCK 7 (dedicator of cytokinesis 7), also known as ZIR2, is a member of the DOCK180-related protein superfamily. Expressed mainly in neuronal cells, DOCK 7 is a guanine nucleotide exchange factor (GEF) for small GTPases, Rac1 and Cdc42, which are the major regulators of actin cytoskeleton. Multiple isoforms of DOCK 7 exist due to alternative splicing events. The DOCK 7 antibody (13000-1-AP) can recognize all the isoforms.

## Publications notables

Autrice	Pubmed ID	Journal	Application
P V Ryder	23676666	Mol Biol Cell	WB
Gao Guo	35915159	Nat Cell Biol	WB
Pankaj S Ghate	37385458	Neurobiol Dis	WB,IF,IP,ColP

## Stockage

Stockage:

Stocker à -20°C. Stable pendant un an après l'expédition.

Tampon de stockage:

PBS avec azoture de sodium à 0,02 % et glycérol à 50 % pH 7,3

L'aliquotage n'est pas nécessaire pour le stockage à -20C

\*\*\* Les 20ul contiennent 0,1% de BSA.

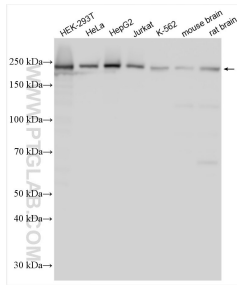
For technical support and original validation data for this product please contact:

T: 1 (888) 4PTGLAB (1-888-478-4522) (toll free in USA), or 1(312) 455-8498 (outside USA)

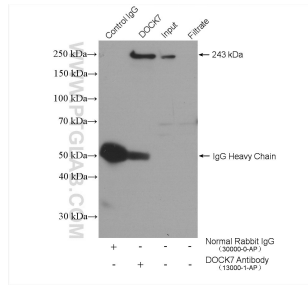
E: proteintech@ptglab.com  
W: ptglab.com

This product is exclusively available under Proteintech Group brand and is not available to purchase from any other manufacturer.

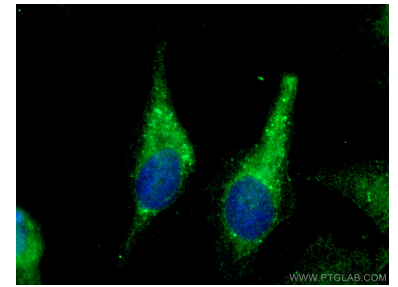
## Données de validation sélectionnées



Various lysates were subjected to SDS PAGE followed by western blot with 13000-1-AP (DOCK7 antibody) at dilution of 1:12000 incubated at room temperature for 1.5 hours.



IP result of anti-DOCK7 (IP:13000-1-AP, 4ug; Detection:13000-1-AP 1:500) with HeLa cells lysate 2640 ug.



Immunofluorescent analysis of (-20°C Methanol) fixed HeLa cells using DOCK7 antibody (13000-1-AP) at dilution of 1:200 and CoraLite@488-Conjugated AffiniPure Goat Anti-Rabbit IgG(H+L).