

À des fins de recherche uniquement

Anticorps Polyclonal de lapin anti-PTPRS



Numéro de catalogue: 13008-1-AP

Phare

5 Publications

Informations de base

Numéro de catalogue:

13008-1-AP

Taille:

150ul, Concentration: 1000 µg/ml by

Nanodrop;

Hôte:

Lapin

Isotype:

IgG

Immunogen Catalog Number:

AG3691

Numéro d'acquisition GenBank:

BC029496

Identification du gène (NCBI):

Nom complet:

protein tyrosine phosphatase, receptor type, S

MW calculé

128aa, 14 kDa; 1948aa, 217 kDa

MW observés:

75-100 kDa

Méthode de purification:

Purification par affinité contre l'antigène

Dilutions recommandées:

WB 1:500-1:1000

IP 0.5-4.0 µg for IP and 1:200-1:1000 for WB

IHC 1:50-1:500

Applications

Applications testées:

FC, IHC, IP, WB, ELISA

Demandes citées:

IF, IHC, WB

Spécificité de l'espèce:

Humain, rat, souris

Espèces citées:

Humain, rat, souris

Contrôles positifs:

WB : cellules HeLa, tissu cérébral de souris

IP : tissu cérébral de souris,

IHC : tissu rénal humain,

Remarque-IHC: il est suggéré de démasquer l'antigène avec un tampon de TE buffer pH 9,0; (*) À défaut, le démasquage de l'antigène peut être effectué avec un tampon citrate pH 6,0.

Informations générales

Type II a receptor protein tyrosine phosphatases (rPTPσ) are cell surface receptors important for nervous system development, function, and repair. The expression of rPTPσ has previously been reported in b-cells and other target organs for INS although the probes chosen did not permit to distinguish between the splice variants. Proteolytic processing near the transmembrane domain generates an extracellular N-terminal E-domain of 130 kDa and a C-terminal P-domain of approximately 85 kDa of rPTPσ, and the short splice variants rPTPσ 3 and 4 contain an E-domain of 95 kDa (PMID: 16552719). rPTPσ expression was observed in tissue lysates of the adult mouse sensory-motor cortex and thoracic spinal cord (T8-T10) as a 75-80kDa immunoreactive band (PMID: 19780196).

Publications notables

Autrice	Pubmed ID	Journal	Application
Andrea M Gomez	25407677	Elife	WB
Jingjing Wu	33151000	J Gene Med	WB
Jun Zhong	30688376	J Cell Biochem	IF, WB

Stockage

Stockage:

Stocker à -20°C. Stable pendant un an après l'expédition.

Tampon de stockage:

PBS avec azoture de sodium à 0,02 % et glycérol à 50 % pH 7,3

L'aliquotage n'est pas nécessaire pour le stockage à -20C

*** Les 20ul contiennent 0,1% de BSA.

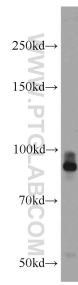
For technical support and original validation data for this product please contact:

T: 1 (888) 4PTGLAB (1-888-478-4522) (toll free in USA), or 1(312) 455-8498 (outside USA)

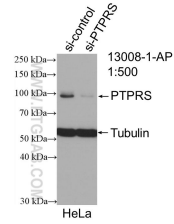
E: proteintech@ptglab.com
W: ptglab.com

This product is exclusively available under Proteintech Group brand and is not available to purchase from any other manufacturer.

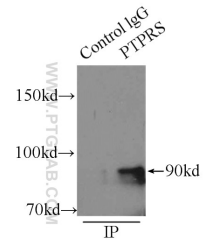
Données de validation sélectionnées



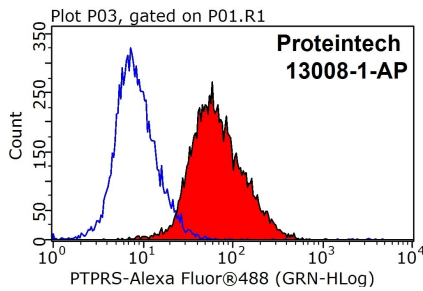
HeLa cells were subjected to SDS PAGE followed by western blot with 13008-1-AP (PTPRS antibody) at dilution of 1:1000 incubated at room temperature for 1.5 hours.



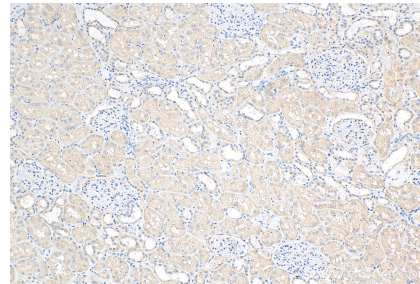
WB result of PTPRS antibody (13008-1-AP; 1:500; incubated at room temperature for 1.5 hours) with sh-Control and sh-PTPRS transfected HeLa cells.



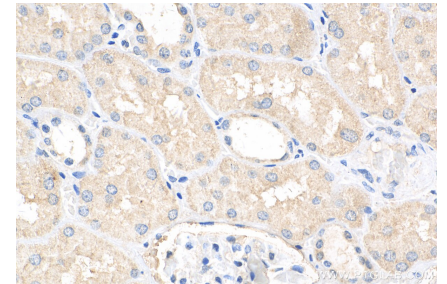
IP Result of anti-PTPRS (IP:13008-1-AP, 5ug; Detection:13008-1-AP 1:400) with mouse brain tissue lysate 6500ug.



1X10⁶ HeLa cells were stained with 0.2ug PTPRS antibody (13008-1-AP, red) and control antibody (blue). Fixed with 90% MeOH blocked with 3% BSA (30 min). Alexa Fluor 488-conjugated AffiniPure Goat Anti-Rabbit IgG(H+L) with dilution 1:1000.



Immunohistochemical analysis of paraffin-embedded human kidney tissue slide using 13008-1-AP (PTPRS antibody) at dilution of 1:200 (under 10x lens). Heat mediated antigen retrieval with Tris-EDTA buffer (pH 9.0).



Immunohistochemical analysis of paraffin-embedded human kidney tissue slide using 13008-1-AP (PTPRS antibody) at dilution of 1:200 (under 40x lens). Heat mediated antigen retrieval with Tris-EDTA buffer (pH 9.0).