

À des fins de recherche uniquement

Anticorps Polyclonal de lapin anti-MMP23B



Numéro de catalogue: 13020-1-AP

1 Publications

Informations de base

Numéro de catalogue:

13020-1-AP

Taille:

150ul, Concentration: 550 µg/ml by Nanodrop and 287 µg/ml by Bradford method using BSA as the standard;

Hôte:

Lapin

Isotype:

IgG

Immunogen Catalog Number:

AG4113

Numéro d'acquisition GenBank:

BC025719

Identification du gène (NCBI):

8510

Nom complet:

matrix metallopeptidase 23B

MW calculé

390 aa, 44 kDa

MW observés:

46-60 kDa

Méthode de purification:

Purification par affinité contre l'antigène

Dilutions recommandées:

WB 1:500-1:1000

IHC 1:100-1:400

IF 1:50-1:500

Applications

Applications testées:

FC, IF, IHC, WB, ELISA

Demandes citées:

IHC

Spécificité de l'espèce:

Humain, souris

Espèces citées:

Humain

Remarque-IHC: il est suggéré de démasquer l'antigène avec un tampon de TE buffer pH 9,0; (*) A défaut, 'le démasquage de l'antigène peut être 'effectué avec un tampon citrate pH 6,0.

Contrôles positifs:

WB : cellules A549, cellules HepG2, cellules PC-3, tissu hépatique de souris

IHC : tissu de tumeur ovarienne humain, tissu de cancer du foie humain

IF : cellules HepG2,

Informations générales

MMP23B(matrix metallopeptidase 23B) is also named as MMP21, MMP22.It is a regulator in matrix remodeling and may be playing a role in enchondral bone formation and in regulation of cranial suture closure .It has 3 isoforms produced by alternative splicing with the molecular weight of 44kDa,48kDa and 46kDa,respectively.It also can be N-glycosylated.

Publications notables

Autrice	Pubmed ID	Journal	Application
Yexin Tong	36434634	J Hematol Oncol	IHC

Stockage

Stockage:

Stocker à -20°C. Stable pendant un an après l'expédition.

Tampon de stockage:

PBS avec azoture de sodium à 0,02 % et glycérol à 50 % pH 7,3

L'aliquotage n'est pas nécessaire pour le stockage à -20C

*** Les 20ul contiennent 0,1% de BSA.

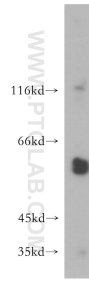
For technical support and original validation data for this product please contact:

T: 1 (888) 4PTGLAB (1-888-478-4522) (toll free in USA), or 1(312) 455-8498 (outside USA)

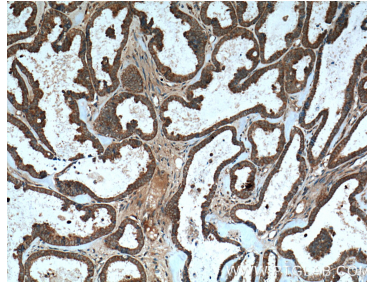
E: proteintech@ptglab.com
W: ptglab.com

This product is exclusively available under Proteintech Group brand and is not available to purchase from any other manufacturer.

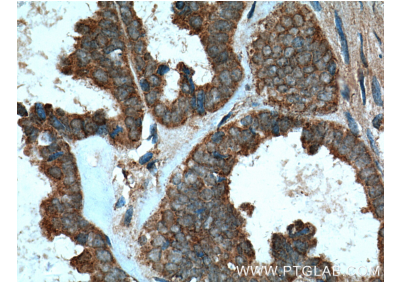
Données de validation sélectionnées



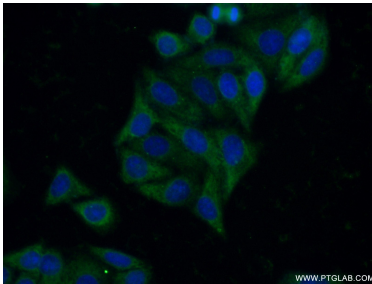
A549 cells were subjected to SDS PAGE followed by western blot with 13020-1-AP (MMP23B antibody) at dilution of 1:500 incubated at room temperature for 1.5 hours.



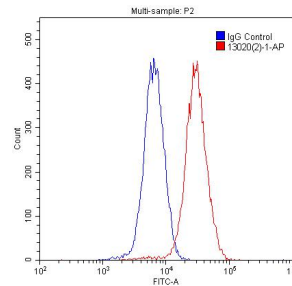
Immunohistochemical analysis of paraffin-embedded human ovary tumor tissue slide using 13020-1-AP (MMP23B Antibody) at dilution of 1:200 (under 10x lens). Heat mediated antigen retrieval with Tris-EDTA buffer (pH 9.0).



Immunohistochemical analysis of paraffin-embedded human ovary tumor tissue slide using 13020-1-AP (MMP23B Antibody) at dilution of 1:200 (under 40x lens). Heat mediated antigen retrieval with Tris-EDTA buffer (pH 9.0).



Immunofluorescent analysis of (-20°C Ethanol) fixed HepG2 cells using 13020-1-AP (MMP23B antibody) at dilution of 1:50 and Alexa Fluor 488-conjugated AffiniPure Goat Anti-Rabbit IgG(H+L).



1x10⁶ HepG2 cells were stained with 0.2ug MMP23B antibody (13020-1-AP, red) and control antibody (blue). Alexa Fluor 488-conjugated AffiniPure Goat Anti-Rabbit IgG(H+L) with dilution 1:1500. Cells were fixed with 4% PFA and permeabilized with 0.1% Triton X-100.