

À des fins de recherche uniquement

# Anticorps Polyclonal de lapin anti-FBX15



Numéro de catalogue: 13024-1-AP

Phare

1 Publications

## Informations de base

Numéro de catalogue:

13024-1-AP

Numéro d'acquisition GenBank:

BC029579

Méthode de purification:

Purification par affinité contre l'antigène

Taille:

150ul, Concentration: 240 µg/ml by Nanodrop and 207 µg/ml by Bradford method using BSA as the standard;

Identification du gène (NCBI):

201456

Dilutions recommandées:

WB 1:500-1:3000

Hôte:

Lapin

Nom complet:

F-box protein 15

MW calculé

434 aa, 49 kDa

Isotype:

IgG

MW observés:

55 kDa

Immunogen Catalog Number:

AG3564

## Applications

Applications testées:

WB, ELISA

Contrôles positifs:

WB : cellules A2780, tissu ovarien de souris

Demandes citées:

WB

Spécificité de l'espèce:

Humain, souris

Espèces citées:

souris

## Informations générales

F-box proteins have been shown to be critical for the ubiquitin-mediated degradation of cellular regulatory proteins, and they are a family of eukaryotic proteins characterized by an approximately 40 amino acid motif. SCF complex, a class of ubiquitin ligases, consists of invariable components, Skp1 and Cullin, and variable components of F-box proteins, which have a primary role in determining substrate specificity. The F-box proteins are divided into 3 classes: FBWs containing WD-40 domains, FBLs containing leucine-rich repeats, and FBXs containing either different protein-protein interaction modules or no recognizable motifs. FBX15 (or FBX15) belongs to the FBXs class, and 2 isoforms produced by alternative splicing has been described. This antibody is expected detect both isoforms.

## Publications notables

Autrice	Pubmed ID	Journal	Application
Zhaoxin Zhang	33159144	Sci Rep	WB

## Stockage

Stockage:

Stocker à -20°C. Stable pendant un an après l'expédition.

Tampon de stockage:

PBS avec azoture de sodium à 0,02 % et glycérol à 50 % pH 7,3

L'aliquotage n'est pas nécessaire pour le stockage à -20C

\*\*\* Les 20ul contiennent 0,1% de BSA.

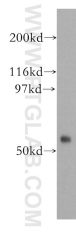
For technical support and original validation data for this product please contact:

T: 1 (888) 4PTGLAB (1-888-478-4522) (toll free in USA), or 1(312) 455-8498 (outside USA)

E: [proteintech@ptglab.com](mailto:proteintech@ptglab.com)  
W: [ptglab.com](http://ptglab.com)

This product is exclusively available under Proteintech Group brand and is not available to purchase from any other manufacturer.

## Données de validation sélectionnées



A2780 cells were subjected to SDS PAGE followed by western blot with 13024-1-AP (FBX15 antibody) at dilution of 1:1500 incubated at room temperature for 1.5 hours.