

À des fins de recherche uniquement

Anticorps Polyclonal de lapin anti-MCM4



Numéro de catalogue: 13043-1-AP

10 Publications

Informations de base

Numéro de catalogue:
13043-1-AP

Taille:
150ul, Concentration: 350 µg/ml by Nanodrop and 267 µg/ml by Bradford method using BSA as the standard;

Hôte:
Lapin

Isotype:
IgG

Immunogen Catalog Number:
AG3703

Numéro d'acquisition GenBank:
BC031061

Identification du gène (NCBI):
4173

Nom complet:
minichromosome maintenance complex component 4

MW calculé
863 aa, 97 kDa

MW observés:
97 kDa

Méthode de purification:
Purification par affinité contre l'antigène

Dilutions recommandées:
WB 1:500-1:3000
IP 0.5-4.0 ug for IP and 1:500-1:1000 for WB

Applications

Applications testées:
IP, WB, ELISA

Demandes citées:
WB

Spécificité de l'espèce:
Humain

Espèces citées:
Humain, souris

Contrôles positifs:

WB : cellules HeLa, cellules HEK-293, cellules HL-60, tissu hépatique humain

IP : cellules HEK-293,

Informations générales

DNA replication licensing factor MCM4 (MCM4), also named Cdc21, acts as component of the MCM2-7 complex (MCM complex) which is the putative replicative helicase essential for 'once per cell cycle' DNA replication initiation and elongation in eukaryotic cells. The active ATPase sites in the MCM2-7 ring are formed through the interaction surfaces of two neighboring subunits such that a critical structure of a conserved arginine finger motif is provided in trans relative to the ATP-binding site of the Walker A box of the adjacent subunit. The six ATPase active sites, however, are likely to contribute differentially to the complex helicase activity. This antibody is a rabbit polyclonal antibody raised against the C-terminal 350 aa sequence of MCM4 protein.

Publications notables

Autrice	Pubmed ID	Journal	Application
Nathalie Eisenhardt	26524493	Nat Struct Mol Biol	WB
Hongyuan Song	29908342	Biomaterials	WB
Lu Yan	31413757	J Cancer	WB

Stockage

Stockage:

Stocker à -20°C. Stable pendant un an après l'expédition.

Tampon de stockage:

PBS avec azoture de sodium à 0,02 % et glycérol à 50 % pH 7,3

L'aliquotage n'est pas nécessaire pour le stockage à -20C

*** Les 20ul contiennent 0,1% de BSA.

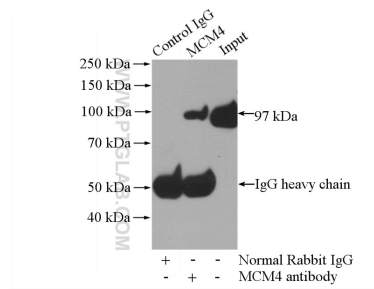
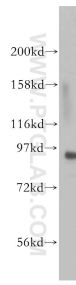
For technical support and original validation data for this product please contact:

T: 1 (888) 4PTGLAB (1-888-478-4522) (toll free in USA), or 1(312) 455-8498 (outside USA)

E: proteintech@ptglab.com
W: ptglab.com

This product is exclusively available under Proteintech Group brand and is not available to purchase from any other manufacturer.

Données de validation sélectionnées



HeLa cells were subjected to SDS PAGE followed by western blot with 13043-1-AP (MCM4 antibody) at dilution of 1:600 incubated at room temperature for 1.5 hours.

IP Result of anti-MCM4 (IP:13043-1-AP, 4ug; Detection:13043-1-AP 1:600) with HEK-293 cells lysate 1200ug.