

À des fins de recherche uniquement

Anticorps Polyclonal de lapin anti-Claudin 1



Numéro de catalogue: 13050-1-AP

Phare

189 Publications

Informations de base

Numéro de catalogue:

13050-1-AP

Taille:

150ul, Concentration: 600 µg/ml by Nanodrop;

Hôte:

Lapin

Isotype:

IgG

Immunogen Catalog Number:

AG3713

Numéro d'acquisition GenBank:

BC012471

Identification du gène (NCBI):

9076

Nom complet:

claudin 1

MW calculé

211 aa, 23 kDa

MW observés:

20-23 kDa

Méthode de purification:

Purification par affinité contre l'antigène

Dilutions recommandées:

WB 1:1000-1:8000

IHC 1:50-1:500

IF 1:1000-1:4000

Applications

Applications testées:

IF, IHC, WB, ELISA

Demandes citées:

IF, IHC, WB

Spécificité de l'espèce:

canin, Humain, rat, souris

Espèces citées:

bovin, canin, Humain, porc, poulet, rat, souris

Remarque-IHC: il est suggéré de démasquer l'antigène avec un tampon de TE buffer pH 9,0; (*) À défaut, le démasquage de l'antigène peut être effectué avec un tampon citrate pH 6,0.

Contrôles positifs:

WB : cellules A431, cellules A549, cellules HUVEC, tissu cutané de rat, tissu cutané de souris, tissu de thymus de souris, tissu hépatique de souris

IHC : tissu de cancer du col de l'utérus humain, tissu cutané de souris, tissu de cancer de l'œsophage humain, tissu de mélanome malin humain

IF : cellules HUVEC, cellules MDCK

Informations générales

Claudins are a family of proteins that are the most important components of the tight junctions, where they establish the paracellular barrier that controls the flow of molecules in the intercellular space between the cells of an epithelium. 23 claudins have been identified. They are small (20-27 kilodalton (kDa)) proteins with very similar structure. They have four transmembrane domains, with the N-terminus and the C-terminus in the cytoplasm. Claudin-1 is expressed primarily in keratinocytes and normal mammary epithelial cells.

Publications notables

Autrice	Pubmed ID	Journal	Application
Yuanyuan Li	33003577	Mar Drugs	WB
Zhongwei Xin	30267473	Thorac Cancer	WB
Ruizhi Hu	34977384	Anim Nutr	IHC

Stockage

Stockage:

Stocker à -20°C. Stable pendant un an après l'expédition.

Tampon de stockage:

PBS avec azoture de sodium à 0,02 % et glycérol à 50 % pH 7,3

L'aliquotage n'est pas nécessaire pour le stockage à -20C

*** Les 20ul contiennent 0,1% de BSA.

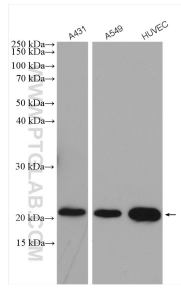
For technical support and original validation data for this product please contact:

T: 1 (888) 4PTGLAB (1-888-478-4522) (toll free in USA), or 1(312) 455-8498 (outside USA)

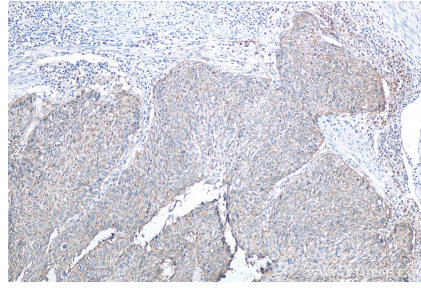
E: proteintech@ptglab.com
W: ptglab.com

This product is exclusively available under Proteintech Group brand and is not available to purchase from any other manufacturer.

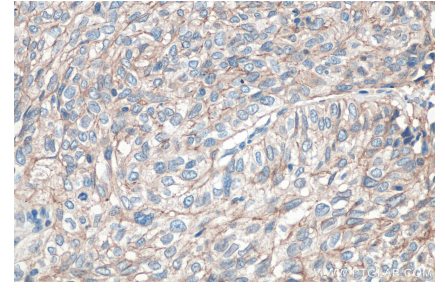
Données de validation sélectionnées



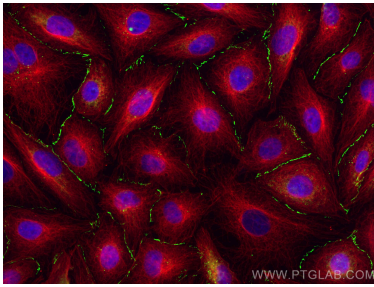
Various lysates were subjected to SDS PAGE followed by western blot with 13050-1-AP (Claudin 1 antibody) at dilution of 1:4000 incubated at room temperature for 1.5 hours.



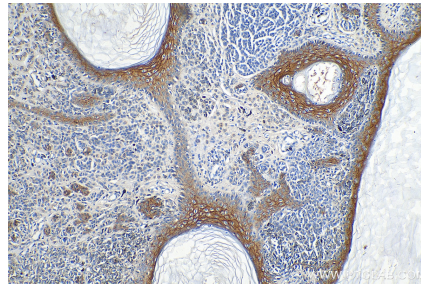
Immunohistochemical analysis of paraffin-embedded human cervical cancer tissue slide using 13050-1-AP (Claudin 1 antibody) at dilution of 1:200 (under 10x lens). Heat mediated antigen retrieval with Tris-EDTA buffer (pH 9.0).



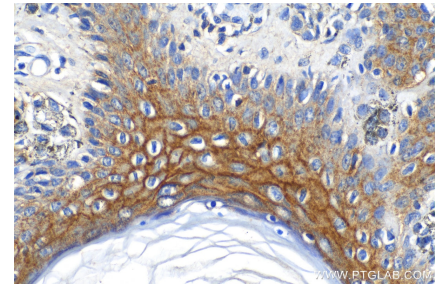
Immunohistochemical analysis of paraffin-embedded human cervical cancer tissue slide using 13050-1-AP (Claudin 1 antibody) at dilution of 1:200 (under 40x lens). Heat mediated antigen retrieval with Tris-EDTA buffer (pH 9.0).



Immunofluorescent analysis of (4% PFA) fixed HUVEC cells using Claudin 1 antibody (13050-1-AP) at dilution of 1:2000 and CoraLite@488-Conjugated AffiniPure Goat Anti-Rabbit IgG(H+L), Alpha Tubulin antibody (66031-1-Ig, Clone: 1E4C11, red).



Immunohistochemical analysis of paraffin-embedded human malignant melanoma tissue slide using 13050-1-AP (Claudin 1 antibody) at dilution of 1:200 (under 10x lens). Heat mediated antigen retrieval with Tris-EDTA buffer (pH 9.0).



Immunohistochemical analysis of paraffin-embedded human malignant melanoma tissue slide using 13050-1-AP (Claudin 1 antibody) at dilution of 1:200 (under 40x lens). Heat mediated antigen retrieval with Tris-EDTA buffer (pH 9.0).