

À des fins de recherche uniquement

Anticorps Polyclonal de lapin anti-G3BP1



Numéro de catalogue: 13057-2-AP

Phare

134 Publications

Informations de base

Numéro de catalogue:

13057-2-AP

Taille:

150ul, Concentration: 650 µg/ml by Nanodrop;

Hôte:

Lapin

Isotype:

IgG

Immunogen Catalog Number:

AG3728

Numéro d'acquisition GenBank:

BC006997

Identification du gène (NCBI):

10146

Nom complet:

GTPase activating protein (SH3 domain) binding protein 1

MW calculé

466 aa, 52 kDa

MW observés:

68 kDa

Méthode de purification:

Purification par affinité contre l'antigène

Dilutions recommandées:

WB 1:2000-1:16000

IP 0.5-4.0 ug for IP and 1:500-1:2000 for WB

IHC 1:200-1:800

IF 1:1000-1:4000

Applications

Applications testées:

FC, IF, IHC, IP, WB, ELISA

Demandes citées:

CoIP, IF, IHC, IP, RIP, WB

Spécificité de l'espèce:

Humain, rat, souris

Espèces citées:

Humain, porc, poulet, rat, singe, souris

Remarque-IHC: il est suggéré de démasquer l'antigène avec un tampon de TE buffer pH 9,0; (*) À défaut, 'le démasquage de l'antigène peut être effectué avec un tampon citrate pH 6,0.

Contrôles positifs:

WB : cellules C6, cellules HEK-293, cellules HeLa, cellules HepG2, cellules Jurkat, cellules MCF-7, cellules Neuro-2a, tissu cérébral de rat, tissu cérébral de souris, tissu cérébral humain, tissu rénal de rat, tissu rénal de souris

IP : cellules HEK-293,

IHC : tissu de cancer du côlon humain, tissu de cancer du poumon humain, tissu de cancer du sein humain

IF : sodium arsenite treated HeLa cells,

Informations générales

GAP SH3 Binding Protein 1 (G3BP1), also named as G3BP, is an effector of stress granule (SG) assembly. SG biology plays an important role in the pathophysiology of TDP-43 in ALS and FTL-D-U. G3BP1 can be used as a marker of SG. It has been shown to function downstream of Ras and play a role in RNA metabolism, signal transduction, and proliferation. G3BP1 is a ubiquitously expressed protein that localizes to the cytoplasm in proliferating cells and to the nucleus in non-proliferating cells. G3BP1 has recently been implicated in cancer biology.

Publications notables

Autrice	Pubmed ID	Journal	Application
Jumin Park	34551427	Nucleic Acids Res	IF
Bin Dai	34560101	J Biol Chem	IF
Jozsef Gal	31481451	Mol Cell Biol	WB,IF

Stockage

Stockage:

Stocker à -20°C. Stable pendant un an après l'expédition.

Tampon de stockage:

PBS avec azoture de sodium à 0,02 % et glycérol à 50 % pH 7,3

L'aliquotage n'est pas nécessaire pour le stockage à -20C

*** Les 20ul contiennent 0,1% de BSA.

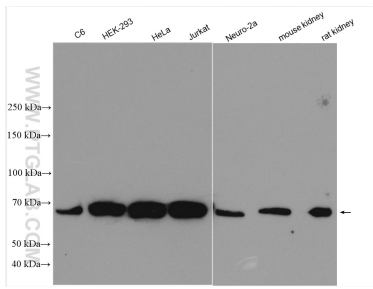
For technical support and original validation data for this product please contact:

T: 1 (888) 4PTGLAB (1-888-478-4522) (toll free in USA), or 1(312) 455-8498 (outside USA)

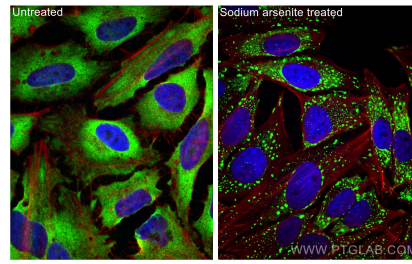
E: proteintech@ptglab.com
W: ptglab.com

This product is exclusively available under Proteintech Group brand and is not available to purchase from any other manufacturer.

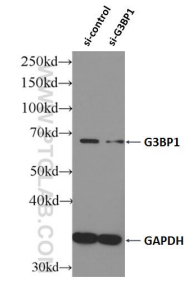
Données de validation sélectionnées



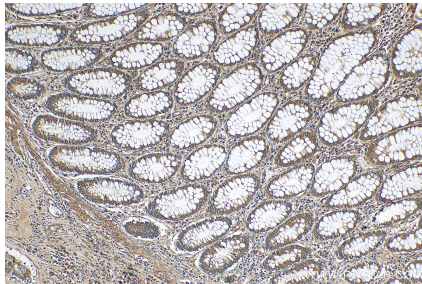
Various lysates were subjected to SDS PAGE followed by western blot with 13057-2-AP (G3BP1 antibody) at dilution of 1:8000 incubated at room temperature for 1.5 hours.



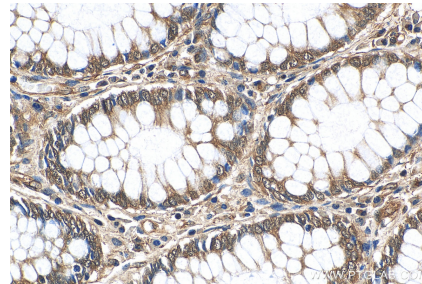
Immunofluorescent analysis of (4% PFA) fixed sodium arsenite treated HeLa cells using G3BP1 antibody (13057-2-AP) at dilution of 1:2000 and CoraLite®488-Conjugated AffiniPure Goat Anti-Rabbit IgG(H+L), CL594-Phalloidin (red).



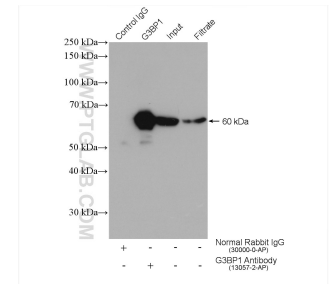
WB result of G3BP1 antibody (13057-2-AP; 1:100000; incubated at room temperature for 1.5 hours) with sh-Control and sh-G3BP1 transfected HEK-293 cells.



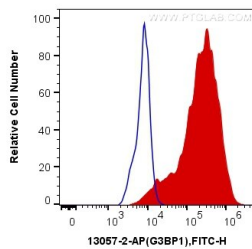
Immunohistochemical analysis of paraffin-embedded human colon cancer tissue slide using 13057-2-AP (G3BP1 antibody) at dilution of 1:400 (under 10x lens). Heat mediated antigen retrieval with Tris-EDTA buffer (pH 9.0).



Immunohistochemical analysis of paraffin-embedded human colon cancer tissue slide using 13057-2-AP (G3BP1 antibody) at dilution of 1:400 (under 40x lens). Heat mediated antigen retrieval with Tris-EDTA buffer (pH 9.0).



IP result of anti-G3BP1(IP:13057-2-AP, 4ug; Detection:13057-2-AP 1:1000) with HEK-293 cells lysate 1040 ug.



1X10⁶ HeLa cells were intracellularly stained with 0.2 ug Anti-Human G3BP1 (13057-2-AP) and CoraLite®488-Conjugated AffiniPure Goat Anti-Rabbit IgG(H+L) at dilution 1:1000 (red), or 0.2 ug Control Antibody. Cells were fixed with 4% PFA and permeabilized with Flow Cytometry Perm Buffer (PF00011-C).