

À des fins de recherche uniquement

Anticorps Polyclonal de lapin anti-S100A7/Psoriasin



Numéro de catalogue: 13061-1-AP

7 Publications

Informations de base

Numéro de catalogue:

13061-1-AP

Taille:

150ul, Concentration: 600 µg/ml by Nanodrop and 273 µg/ml by Bradford method using BSA as the standard;

Hôte:

Lapin

Isotype:

IgG

Immunogen Catalog Number:

AG3738

Numéro d'acquisition GenBank:

BC034687

Identification du gène (NCBI):

6278

Nom complet:

S100 calcium binding protein A7

MW calculé

101 aa, 11 kDa

MW observés:

11 kDa

Méthode de purification:

Purification par affinité contre l'antigène

Dilutions recommandées:

WB 1:200-1:1000

IHC 1:20-1:200

IF 1:200-1:800

Applications

Applications testées:

IF, IHC, WB, ELISA

Demandes citées:

IHC, WB

Spécificité de l'espèce:

Humain

Espèces citées:

Humain

Remarque-IHC: il est suggéré de démasquer l'antigène avec un tampon de TE buffer pH 9,0; (*) A défaut, 'le démasquage de l'antigène peut être 'effectué avec un tampon citrate pH 6,0.

Contrôles positifs:

WB : cellules MCF-7,

IHC : tissu de cancer de l'oesophage humain, tissu de cancer du sein humain

IF : cellules MCF-7,

Informations générales

S100A7 (psoriasis), a member of the S100 protein family, is a well-known antimicrobial peptide and a signaling molecule which regulates cellular function and is expressed in many squamous cell carcinomas (SCCs), such as SCC of the skin. It is an EF-hand type calcium binding protein localized in epithelial cells, regulates cell proliferation and differentiation. The protein is overexpressed in hyperproliferative skin diseases, exhibits antimicrobial activities against bacteria and induces immunomodulatory activities.

Publications notables

Autrice	Pubmed ID	Journal	Application
Qingqing Sun	33675277	Cell Biol Int	WB
T Yuan	33428294	J Eur Acad Dermatol Venereol	WB
Xinxin Liu	32319620	Mol Med Rep	WB

Stockage

Stockage:

Stocker à -20°C. Stable pendant un an après l'expédition.

Tampon de stockage:

PBS avec azoture de sodium à 0,02 % et glycérol à 50 % pH 7,3

L'aliquotage n'est pas nécessaire pour le stockage à -20C

*** Les 20ul contiennent 0,1% de BSA.

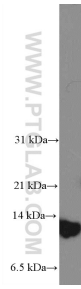
For technical support and original validation data for this product please contact:

T: 1 (888) 4PTGLAB (1-888-478-4522) (toll free in USA), or 1(312) 455-8498 (outside USA)

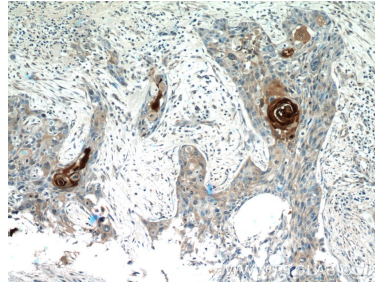
E: proteintech@ptglab.com
W: ptglab.com

This product is exclusively available under Proteintech Group brand and is not available to purchase from any other manufacturer.

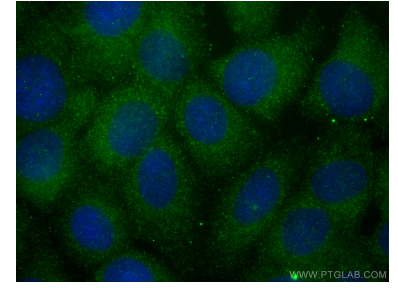
Données de validation sélectionnées



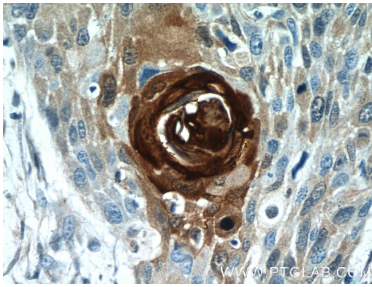
MCF-7 cells were subjected to SDS PAGE followed by western blot with 13061-1-AP (S100A7/Psoriasin antibody at dilution of 1:300 incubated at room temperature for 1.5 hours.



Immunohistochemical analysis of paraffin-embedded human oesophagus cancer tissue slide using 13061-1-AP (S100A7/Psoriasin antibody at dilution of 1:50 (under 10x lens).



Immunofluorescent analysis of (-20°C Methanol) fixed MCF-7 cells using S100A7/Psoriasin antibody (13061-1-AP) at dilution of 1:400 and CoraLite®488-Conjugated AffiniPure Goat Anti-Rabbit IgG(H+L).



Immunohistochemical analysis of paraffin-embedded human oesophagus cancer tissue slide using 13061-1-AP (S100A7/Psoriasin antibody at dilution of 1:50 (under 40x lens).