

À des fins de recherche uniquement

Anticorps Polyclonal de lapin anti-SLC1A4



Numéro de catalogue: 13067-2-AP

4 Publications

Informations de base

Numéro de catalogue:
13067-2-AP

Taille:
150ul, Concentration: 650 µg/ml by Nanodrop and 413 µg/ml by Bradford method using BSA as the standard;

Hôte:
Lapin

Isotype:
IgG

Immunogen Catalog Number:
AG3763

Numéro d'acquisition GenBank:
BC026216

Identification du gène (NCBI):
6509

Nom complet:
solute carrier family 1 (glutamate/neutral amino acid transporter), member 4

MW calculé
532 aa, 56 kDa

MW observés:
62-70 kDa

Méthode de purification:
Purification par affinité contre l'antigène

Dilutions recommandées:
IP 0.5-4.0 ug for IP and 1:500-1:2000 for WB

Applications

Applications testées:
IHC, IP, WB, ELISA

Demandes citées:
WB

Spécificité de l'espèce:
Humain, rat, souris

Espèces citées:
Humain, souris

Contrôles positifs:

IP : tissu cérébral de souris,

Informations générales

Publications notables

Autrice	Pubmed ID	Journal	Application
Xin Liu	34496888	Mol Cancer	WB
Xiaozhen Peng	33777811	Front Oncol	WB
Megan L Ratz	37162879	Res Sq	WB

Stockage

Stockage:

Stocker à -20°C. Stable pendant un an après l'expédition.

Tampon de stockage:

PBS avec azoture de sodium à 0,02 % et glycérol à 50 % pH 7,3

L'aliquotage n'est pas nécessaire pour le stockage à -20C

*** Les 20ul contiennent 0,1% de BSA.

For technical support and original validation data for this product please contact:

T: 1 (888) 4PTGLAB (1-888-478-4522) (toll free in USA), or 1(312) 455-8498 (outside USA)

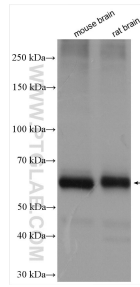
E: proteintech@ptglab.com
W: ptglab.com

This product is exclusively available under Proteintech Group brand and is not available to purchase from any other manufacturer.

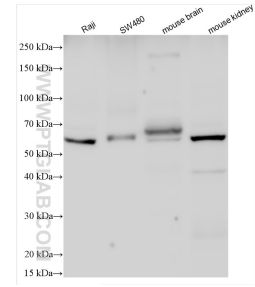
Données de validation sélectionnées



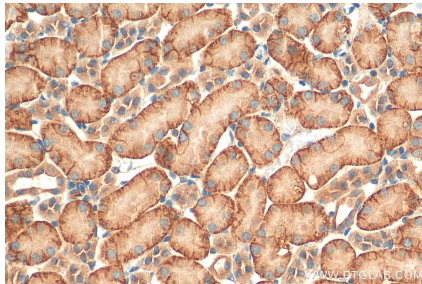
Immunohistochemical analysis of paraffin-embedded mouse skeletal muscle tissue slide using 13067-2-AP (SLC1A4 antibody) at dilution of 1:200 (under 10x lens). Heat mediated antigen retrieval with Tris-EDTA buffer (pH 9.0).



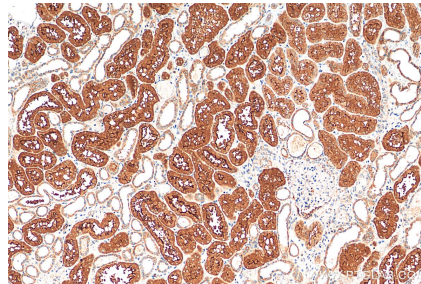
Various lysates were subjected to SDS PAGE followed by western blot with 13067-2-AP (SLC1A4 antibody) at dilution of 1:2000 incubated at room temperature for 1.5 hours.



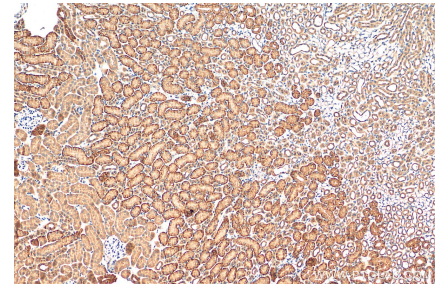
Various lysates were subjected to SDS PAGE followed by western blot with 13067-2-AP (SLC1A4 antibody) at dilution of 1:5000 incubated at room temperature for 1.5 hours.



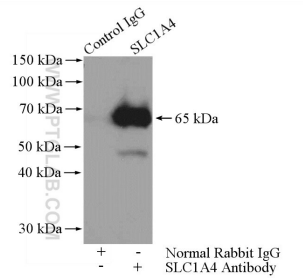
Immunohistochemical analysis of paraffin-embedded mouse kidney tissue slide using 13067-2-AP (SLC1A4 antibody) at dilution of 1:500 (under 40x lens). Heat mediated antigen retrieval with Tris-EDTA buffer (pH 9.0).



Immunohistochemical analysis of paraffin-embedded human kidney tissue slide using 13067-2-AP (SLC1A4 antibody) at dilution of 1:500 (under 10x lens). Heat mediated antigen retrieval with Tris-EDTA buffer (pH 9.0).



Immunohistochemical analysis of paraffin-embedded mouse kidney tissue slide using 13067-2-AP (SLC1A4 antibody) at dilution of 1:500 (under 10x lens). Heat mediated antigen retrieval with Tris-EDTA buffer (pH 9.0).



IP Result of anti-SLC1A4 (IP:13067-2-AP, 4ug; Detection:13067-2-AP 1:1000) with mouse brain tissue lysate 4000ug.