

À des fins de recherche uniquement

# Anticorps Polyclonal de lapin anti-MITF



Numéro de catalogue: 13092-1-AP

24 Publications

## Informations de base

Numéro de catalogue:

13092-1-AP

Taille:

150ul, Concentration: 550 µg/ml by Nanodrop;

Hôte:

Lapin

Isotype:

IgG

Immunogen Catalog Number:

AG3679

Numéro d'acquisition GenBank:

BC012503

Identification du gène (NCBI):

4286

Nom complet:

microphthalmia-associated transcription factor

MW calculé

91 aa, 10 kDa, 59 kDa

MW observés:

59-65 kDa

Méthode de purification:

Purification par affinité contre l'antigène

Dilutions recommandées:

WB 1:500-1:2000

IP 0.5-4.0 ug for IP and 1:500-1:2000 for WB

FC 1:20-1:200

## Applications

Applications testées:

FC, IP, WB, ELISA

Demandes citées:

IF, WB

Spécificité de l'espèce:

Humain, rat, souris

Espèces citées:

Humain, rat, souris

Contrôles positifs:

WB : tissu cutané de rat, cellules Jurkat, tissu cardiaque de souris

IP : tissu cardiaque de souris,

FC : cellules SCEh,

## Informations générales

The retinal pigment epithelium (RPE) has an essential role in maintaining visual function and dedifferentiation of RPE contributes to the pathophysiology of several ocular diseases [PMID: 22523078]. Microphthalmia-associated transcription factor (MITF) is a key regulator of RPE differentiation that is also down-regulated in dedifferentiated hRPE cells. MITF is a basic helix-loop-helix (hHLH)-leucine zipper protein that involves in the development of various cell types, including neural crest-derived melanocytes and optic cup-derived retinal pigment epithelial cells [PMID: 10578055].

## Publications notables

Autrice	Pubmed ID	Journal	Application
Kaushal Asrani	31527310	J Clin Invest	WB
Bohee Jang	34650007	Mol Cells	WB
Haibin Tian	36185374	iScience	IF

## Stockage

Stockage:

Stocker à -20°C. Stable pendant un an après l'expédition.

Tampon de stockage:

PBS avec azote de sodium à 0,02 % et glycérol à 50 % pH 7,3

L'aliquotage n'est pas nécessaire pour le stockage à -20C

\*\*\* Les 20ul contiennent 0,1% de BSA.

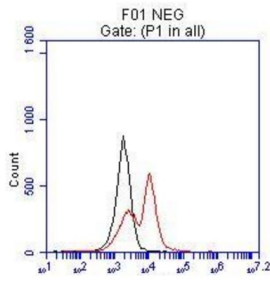
For technical support and original validation data for this product please contact:

T: 1 (888) 4PTGLAB (1-888-478-4522) (toll free in USA), or 1(312) 455-8498 (outside USA)

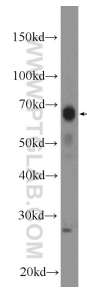
E: [proteintech@ptglab.com](mailto:proteintech@ptglab.com)  
W: [ptglab.com](http://ptglab.com)

This product is exclusively available under Proteintech Group brand and is not available to purchase from any other manufacturer.

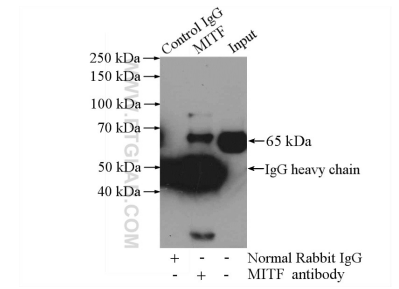
## Données de validation sélectionnées



FC result of anti-MITF (13092-1-AP, 1:50) with hESC which spontaneous differentiation toward retinal lineage (RPE). (Black: control; Red MITF).



rat skin tissue were subjected to SDS PAGE followed by western blot with 13092-1-AP (MITF Antibody) at dilution of 1:1000 incubated at room temperature for 1.5 hours.



IP Result of anti-MITF (IP:13092-1-AP, 4 $\mu$ g; Detection:13092-1-AP 1:1000) with mouse heart tissue lysate 4000 $\mu$ g.