

À des fins de recherche uniquement

Anticorps Polyclonal de lapin anti-KIF2A



Numéro de catalogue: 13105-1-AP

Phare

10 Publications

Informations de base

Numéro de catalogue:
13105-1-AP

Taille:
150ul, Concentration: 300 µg/ml by Nanodrop and 207 µg/ml by Bradford method using BSA as the standard;

Hôte:
Lapin

Isotype:
IgG

Immunogen Catalog Number:
AG3748

Numéro d'acquisition GenBank:
BC031828

Identification du gène (NCBI):
3796

Nom complet:
kinesin heavy chain member 2A

MW calculé
679 aa, 77 kDa

MW observés:
80-100 kDa

Méthode de purification:
Purification par affinité contre l'antigène

Dilutions recommandées:
WB 1:1000-1:8000
IP 0.5-4.0 ug for IP and 1:500-1:2000 for WB
IHC 1:20-1:200
IF 1:50-1:500

Applications

Applications testées:
FC, IF, IHC, IP, WB, ELISA

Demandes citées:
IF, WB

Spécificité de l'espèce:
canin, Humain, rat, souris

Espèces citées:
Humain, souris

Remarque-IHC: il est suggéré de démasquer l'antigène avec un tampon de TE buffer pH 9,0; (*) A défaut, 'le démasquage de l'antigène peut être 'effectué avec un tampon citrate pH 6,0.

Contrôles positifs:

WB : cellules HeLa, tissu cérébral de rat, tissu cérébral de souris

IP : tissu cérébral de souris,

IHC : tissu de cancer du sein humain,

IF : cellules MDCK,

Informations générales

Publications notables

Autrice	Pubmed ID	Journal	Application
Tianyu Wu	36395215	Science	IF
Junjie Huang	34137789	J Cell Biol	WB, IF
Xin Zhang	32106376	Biomed Pharmacother	WB

Stockage

Stockage:

Stocker à -20°C. Stable pendant un an après l'expédition.

Tampon de stockage:

PBS avec azoture de sodium à 0,02 % et glycérol à 50 % pH 7,3

L'aliquotage n'est pas nécessaire pour le stockage à -20C

*** Les 20ul contiennent 0,1% de BSA.

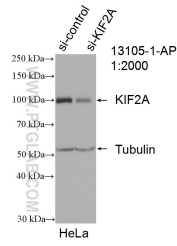
For technical support and original validation data for this product please contact:

T: 1 (888) 4PTGLAB (1-888-478-4522) (toll free in USA), or 1(312) 455-8498 (outside USA)

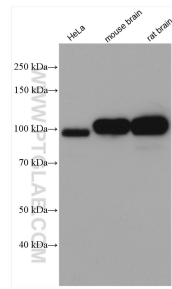
E: proteintech@ptglab.com
W: ptglab.com

This product is exclusively available under Proteintech Group brand and is not available to purchase from any other manufacturer.

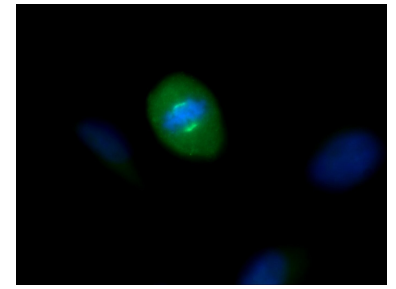
Données de validation sélectionnées



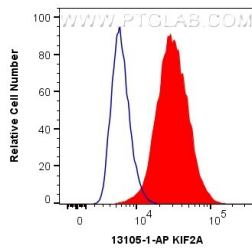
WB result of KIF2A antibody (13105-1-AP; 1:3000; incubated at room temperature for 1.5 hours) with sh-Control and sh-KIF2A transfected HeLa cells.



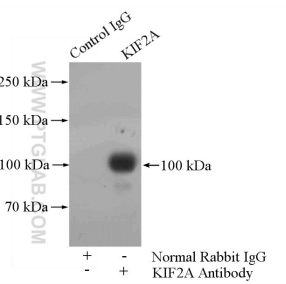
Various lysates were subjected to SDS PAGE followed by western blot with 13105-1-AP (KIF2A antibody) at dilution of 1:4000 incubated at room temperature for 1.5 hours.



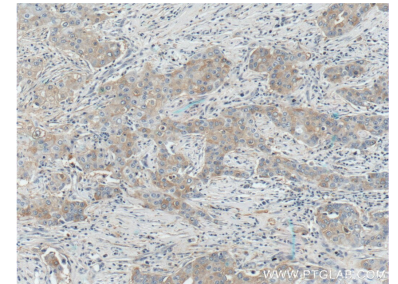
Immunofluorescent analysis of MDCK cells using 13105-1-AP (KIF2A antibody) at dilution of 1:50 and Alexa Fluor 488-conjugated AffiniPure Goat Anti-Rabbit IgG(H+L).



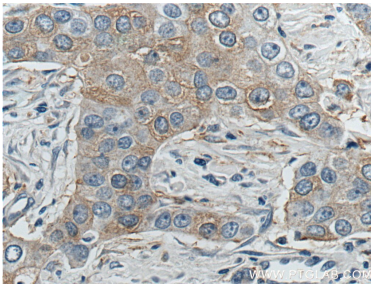
1X10⁶ A549 cells were intracellularly stained with 0.4 ug Anti-Human KIF2A (13105-1-AP) and CoraLite@488-Conjugated AffiniPure Goat Anti-Rabbit IgG(H+L) at dilution 1:1000 (red), or 0.4 ug Isotype Control. Cells were fixed with 4% PFA and permeabilized with Flow Cytometry Perm Buffer (PF00011-C).



IP Result of anti-KIF2A (IP:13105-1-AP, 4ug; Detection:13105-1-AP 1:1000) with mouse brain tissue lysate 4000ug.



Immunohistochemical analysis of paraffin-embedded human breast cancer tissue slide using 13105-1-AP (KIF2A Antibody) at dilution of 1:200 (under 10x lens).



Immunohistochemical analysis of paraffin-embedded human breast cancer tissue slide using 13105-1-AP (KIF2A Antibody) at dilution of 1:200 (under 40x lens).