

À des fins de recherche uniquement

# Anticorps Polyclonal de lapin anti-PYCR1



Numéro de catalogue: 13108-1-AP

Phare

41 Publications

## Informations de base

Numéro de catalogue:

13108-1-AP

Taille:

150ul, Concentration: 900 µg/ml by Nanodrop;

Hôte:

Lapin

Isotype:

IgG

Immunogen Catalog Number:

AG3764

Numéro d'acquisition GenBank:

BC022244

Identification du gène (NCBI):

5831

Nom complet:

pyrroline-5-carboxylate reductase 1

MW calculé

319 aa, 33.8 kDa

MW observés:

33 kDa, 35 kDa

Méthode de purification:

Purification par affinité contre l'antigène

Dilutions recommandées:

WB 1:1000-1:4000

IP 0.5-4.0 ug for IP and 1:500-1:1000 for WB

IHC 1:100-1:400

IF 1:50-1:400

## Applications

Applications testées:

IF, IHC, IP, WB, ELISA

Demandes citées:

IF, IHC, IP, WB

Spécificité de l'espèce:

Humain, rat, souris

Espèces citées:

Humain, poisson-zèbre, souris

**Remarque-IHC: il est suggéré de démasquer l'antigène avec un tampon de TE buffer pH 9.0; (\*) À défaut, le démasquage de l'antigène peut être effectué avec un tampon citrate pH 6.0.**

Contrôles positifs:

WB : cellules COLO 320, cellules HeLa, cellules HT-1080, cellules NIH/3T3, tissu cérébral de rat, tissu cérébral de souris, tissu cérébral humain, tissu embryonnaire de souris

IP : tissu cérébral de souris,

IHC : tissu de cancer de la prostate humain,

IF : cellules MCF-7,

## Informations générales

PYCR1, also named as P5CR1, belongs to the pyrroline-5-carboxylate reductase family. It is a housekeeping enzyme that catalyzes the last step in proline biosynthesis. PYCR1 can utilize both NAD and NADP, but has higher affinity for NAD. It is involved in the cellular response to oxidative stress. Mutation in PYCR1 will cause ARCL type II (ARCL2B). Some mutation will cause DeBary syndrome (DBS) which is characterized by progeroid features, ophthalmological abnormalities, intrauterine growth retardation, and cutis laxa. The MW of PYCR1 is about 33-35 kDa. PYCR1 has 3 isoforms produced by alternative splicing. This antibody may have cross reaction to PYCR2 due to the high homology.

## Publications notables

Autrice	Pubmed ID	Journal	Application
Hisayo Jin	27796797	Cell Stress Chaperones	
Ling Guo	33004813	Nat Commun	WB,IHC,IP
Yingyi Ye	30568501	Cancer Manag Res	WB

## Stockage

Stockage:

Stocker à -20°C. Stable pendant un an après l'expédition.

Tampon de stockage:

PBS avec azoture de sodium à 0,02 % et glycérol à 50 % pH 7,3

L'aliquotage n'est pas nécessaire pour le stockage à -20C

\*\*\* Les 20ul contiennent 0,1% de BSA.

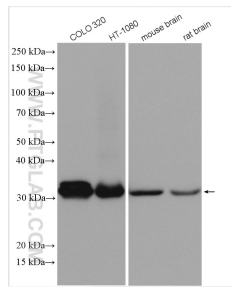
For technical support and original validation data for this product please contact:

T: 1 (888) 4PTGLAB (1-888-478-4522) (toll free in USA), or 1(312) 455-8498 (outside USA)

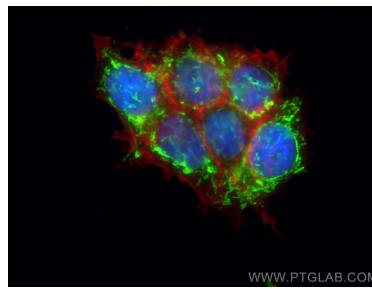
E: proteintech@ptglab.com  
W: ptglab.com

This product is exclusively available under Proteintech Group brand and is not available to purchase from any other manufacturer.

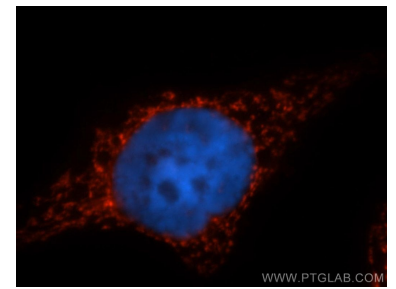
## Données de validation sélectionnées



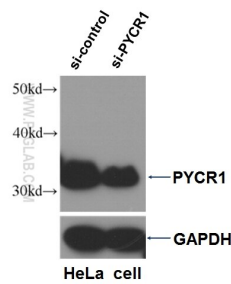
Various lysates were subjected to SDS PAGE followed by western blot with 13108-1-AP (PYCR1 antibody) at dilution of 1:2000 incubated at room temperature for 1.5 hours.



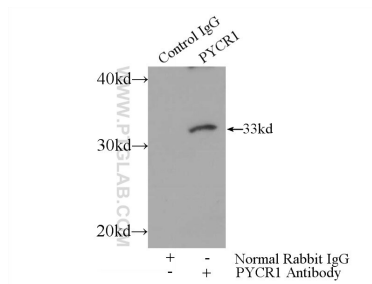
Immunofluorescent analysis of (4% PFA) fixed MCF-7 cells using PYCR1 antibody (13108-1-AP) at dilution of 1:400 and CoraLite@488-Conjugated AffiniPure Goat Anti-Rabbit IgG(H+L), CL594-Phalloidin (red).



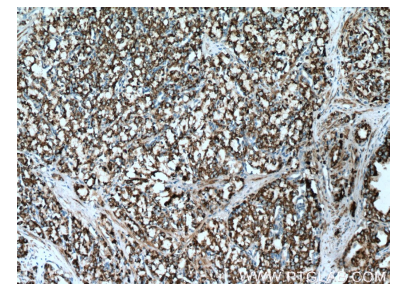
Immunofluorescent analysis of MCF-7 cells, using PYCR1 antibody 13108-1-AP at 1:50 dilution and Rhodamine-labeled goat anti-rabbit IgG (red). Blue pseudocolor = DAPI (fluorescent DNA dye).



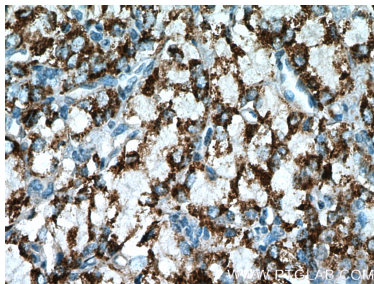
WB result of PYCR1 antibody (13108-1-AP, 1:5000) with si-Control and si-PYCR1 transfected HeLa cells.



IP Result of anti-PYCR1 (IP:13108-1-AP, 3ug; Detection:13108-1-AP 1:700) with mouse brain tissue lysate 4000ug.



Immunohistochemical analysis of paraffin-embedded human prostate cancer tissue slide using 13108-1-AP (PYCR1 Antibody) at dilution of 1:200 (under 10x lens). Heat mediated antigen retrieval with Tris-EDTA buffer (pH 9.0).



Immunohistochemical analysis of paraffin-embedded human prostate cancer tissue slide using 13108-1-AP (PYCR1 Antibody) at dilution of 1:200 (under 40x lens). Heat mediated antigen retrieval with Tris-EDTA buffer (pH 9.0).