

À des fins de recherche uniquement

# Anticorps Polyclonal de lapin anti-PPP2R2B/A/C/D



Numéro de catalogue: 13123-1-AP

2 Publications

## Informations de base

Numéro de catalogue:

13123-1-AP

Taille:

150ul , Concentration: 200 µg/ml by Nanodrop and 140 µg/ml by Bradford method using BSA as the standard;

Hôte:

Lapin

Isotype:

IgG

Immunogen Catalog Number:

AG3860

Numéro d'acquisition GenBank:

BC031790

Identification du gène (NCBI):

5521

Nom complet:

protein phosphatase 2 (formerly 2A), regulatory subunit B, beta isoform

MW calculé

443 aa, 52 kDa

MW observés:

52 kDa

Méthode de purification:

Purification par affinité contre l'antigène

Dilutions recommandées:

WB 1:500-1:3000

IP 0.5-4.0 ug for IP and 1:500-1:1000 for WB

IHC 1:50-1:500

IF 1:10-1:100

## Applications

Applications testées:

IF, IHC, IP, WB, ELISA

Demandes citées:

CoIP, IF, IHC, WB

Spécificité de l'espèce:

Humain, rat, souris

Espèces citées:

Humain

Contrôles positifs:

WB : cellules HeLa, cellules HepG2, cellules Jurkat, cellules MCF-7, cellules SH-SY5Y, tissu cérébral de rat, tissu cérébral de souris, tissu cérébral humain foetal

IP : cellules SH-SY5Y,

IHC : tissu cérébral de souris,

IF : cellules SH-SY5Y,

**Remarque-IHC: il est suggéré de démasquer l'antigène avec un tampon de TE buffer pH 9,0; (\*) A défaut, 'le démasquage de l'antigène peut être 'effectué avec un tampon citrate pH 6,0.**

## Informations générales

The PPP2R2B gene encodes a deduced 443-amino acid protein of approximately 52 kDa, which is a brain-specific regulatory subunit B of protein phosphatase 2. PPP2R2B is a Subunit of PP2A, a highly conserved constitutive enzyme (PMID:11719278). PPP2R2B (Bβ) is an important regulator of protein phosphatase 2A (PP2A) activity in the brain. Through differential promoter usage and alternative splicing, two major isoforms Bβ1 and Bβ2 with divergent sub-cellular targeting N termini are produced. Bβ plays an important role in neuronal survival. It has 5 isoforms produced by alternative splicing. This antibody has cross-reactivity to PPP2R2A, PPP2R2C and PPP2R2D.

## Publications notables

Autrice	Pubmed ID	Journal	Application
Zheng Li	33407498	Cancer Cell Int	WB, IHC, IF
Mingyu Hu	36250210	Mol Ther Nucleic Acids	WB, CoIP

## Stockage

Stockage:

Stocker à -20°C. Stable pendant un an après l'expédition.

Tampon de stockage:

PBS avec azote de sodium à 0,02 % et glycérol à 50 % pH 7,3

L'aliquotage n'est pas nécessaire pour le stockage à -20C

\*\*\* Les 20ul contiennent 0,1% de BSA.

For technical support and original validation data for this product please contact:

T: 1 (888) 4PTGLAB (1-888-478-4522) (toll free in USA), or 1(312) 455-8498 (outside USA)

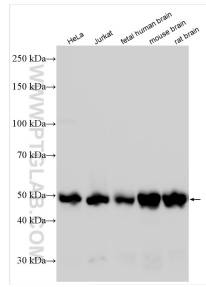
E: proteintech@ptglab.com  
W: ptglab.com

This product is exclusively available under Proteintech Group brand and is not available to purchase from any other manufacturer.

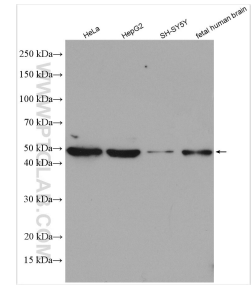
## Données de validation sélectionnées



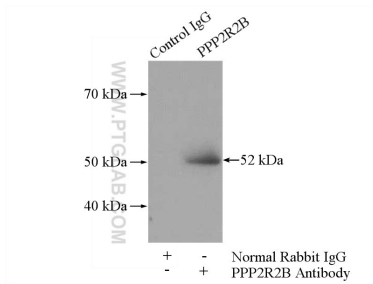
Immunohistochemical analysis of paraffin-embedded mouse brain tissue slide using 13123-1-AP (PPP2R2B/A/C/D antibody) at dilution of 1:200 (under 10x lens). Heat mediated antigen retrieval with Tris-EDTA buffer (pH 9.0).



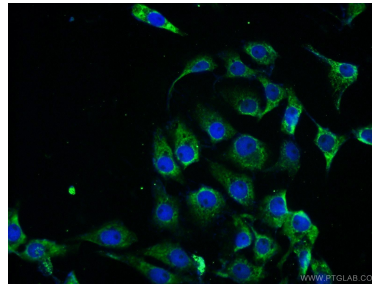
Various lysates were subjected to SDS PAGE followed by western blot with 13123-1-AP (PPP2R2B/A/C/D antibody) at dilution of 1:1500 incubated at room temperature for 1.5 hours.



Various lysates were subjected to SDS PAGE followed by western blot with 13123-1-AP (PPP2R2B/A/C/D antibody) at dilution of 1:800 incubated at room temperature for 1.5 hours.



IP Result of anti-PPP2R2B/A/C/D (IP:13123-1-AP, 4ug; Detection:13123-1-AP 1:500) with SH-SY5Y cells lysate 1200ug.



Immunofluorescent analysis of SH-SY5Y cells using 13123-1-AP (PPP2R2B/A/C/D antibody) at dilution of 1:25 and Alexa Fluor 488-conjugated AffiniPure Goat Anti-Rabbit IgG(H+L).