

À des fins de recherche uniquement

# Anticorps Polyclonal de lapin anti-SNTA1



Numéro de catalogue: 13131-1-AP

## Informations de base

<b>Numéro de catalogue:</b> 13131-1-AP	<b>Numéro d'acquisition GenBank:</b> BC026215	<b>Méthode de purification:</b> Purification par affinité contre l'antigène
<b>Taille:</b> 150ul , Concentration: 200 µg/ml by Nanodrop;	<b>Identification du gène (NCBI):</b> 6640	<b>Dilutions recommandées:</b> WB 1:500-1:3000 IHC 1:50-1:500
<b>Hôte:</b> Lapin	<b>Nom complet:</b> syntrophin, alpha 1 (dystrophin-associated protein A1, 59kDa, acidic component)	
<b>Isotype:</b> IgG	<b>MW calculé</b> 505 aa, 54 kDa	
<b>Immunogen Catalog Number:</b> AG3820	<b>MW observés:</b> 54 kDa	

## Applications

### Applications testées:

IHC, WB, ELISA

### Spécificité de l'espèce:

Humain, rat, souris

**Remarque-IHC: il est suggéré de démasquer l'antigène avec un tampon de TE buffer pH 9.0; (\*) À défaut, 'le démasquage de l'antigène peut être 'effectué avec un tampon citrate pH 6,0.**

### Contrôles positifs:

WB : tissu cardiaque de souris, tissu cardiaque de rat

IHC : tissu cardiaque de souris,

## Informations générales

SNTA1, also known as Syntrophin 1, SNT1, is cytoplasmic peripheral membrane scaffold proteins that are components of the dystrophin-associated protein complex. SNTA1 is a signal-transducing adaptor protein and serves as a scaffold for various signaling molecules. Alpha-1 syntrophin contains a PDZ domain, two Pleckstrin homology domains, and a 'syntrophin unique' domain. SNTA1 is the high expression in skeletal muscle and heart (PMID: 8576247, 8612778,). The PDZ domain of SNTA1 has been reported to bind to the C-terminal domain of murine cardiac voltage-gated sodium channels (SkM2) causing altering ion channel activity leading to Long QT syndrome (PMID 19684871, 19862833).

## Stockage

### Stockage:

Stocker à -20°C. Stable pendant un an après l'expédition.

### Tampon de stockage:

PBS avec azoture de sodium à 0,02 % et glycérol à 50 % pH 7,3

L'aliquotage n'est pas nécessaire pour le stockage à -20C

\*\*\* Les 20ul contiennent 0,1% de BSA.

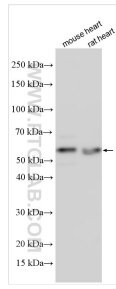
For technical support and original validation data for this product please contact:

T: 1 (888) 4PTGLAB (1-888-478-4522) (toll free in USA), or 1(312) 455-8498 (outside USA)

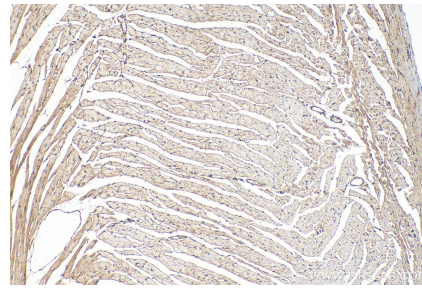
E: [proteintech@ptglab.com](mailto:proteintech@ptglab.com)  
W: [ptglab.com](http://ptglab.com)

This product is exclusively available under Proteintech Group brand and is not available to purchase from any other manufacturer.

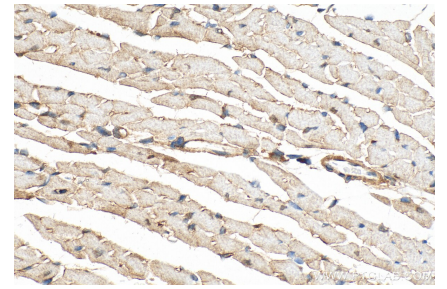
## Données de validation sélectionnées



Various lysates were subjected to SDS PAGE followed by western blot with 13131-1-AP (SNTA1 antibody) at dilution of 1:1500 incubated at room temperature for 1.5 hours.



Immunohistochemical analysis of paraffin-embedded mouse heart tissue slide using 13131-1-AP (SNTA1 antibody) at dilution of 1:200 (under 10x lens). Heat mediated antigen retrieval with Tris-EDTA buffer (pH 9.0).



Immunohistochemical analysis of paraffin-embedded mouse heart tissue slide using 13131-1-AP (SNTA1 antibody) at dilution of 1:200 (under 40x lens). Heat mediated antigen retrieval with Tris-EDTA buffer (pH 9.0).