

À des fins de recherche uniquement

Anticorps Polyclonal de lapin anti-FGD1



Numéro de catalogue: 13141-1-AP

Informations de base

Numéro de catalogue: 13141-1-AP	Numéro d'acquisition GenBank: BC034530	Méthode de purification: Purification par affinité contre l'antigène
Taille: 150ul , Concentration: 260 µg/ml by Nanodrop and 133 µg/ml by Bradford method using BSA as the standard;	Identification du gène (NCBI): 2245	Dilutions recommandées: WB 1:500-1:1000
Hôte: Lapin	Nom complet: FYVE, RhoGEF and PH domain containing 1	
Isotype: IgG	MW calculé: 901 aa, 91 kDa	
Immunogen Catalog Number: AG3861	MW observés: 130 kDa	

Applications

Applications testées: WB, ELISA	Contrôles positifs: WB : cellules BxPC-3, cellules U2OS
Spécificité de l'espèce: Humain, rat, souris	

Informations générales

FGD1 is also named as FGDY (Faciogenital dysplasia 1 protein), ZFYVE3 (Zinc finger FYVE domain-containing protein 3), Rho/Rac guanine nucleotide exchange factor FGD1 (Rho/Rac GEF), FYVE, RhoGEF and PH domain-containing protein 1. FGD1 activates CDC42, a member of the Ras-like family of Rho- and Rac proteins, by exchanging bound GDP for free GTP. And FGD1 plays a role in regulating the actin cytoskeleton and cell shape. (PMID: 8969170). FGD1 was markedly overexpressed and might be a prognostic biomarker in osteosarcoma patient specimens (PMID: 32194840). FGD1 is specific for the Rho GTPase cell division cycle 42 (CDC42) (PMID: 22854039).

Stockage

Stockage:
Stocker à -20°C. Stable pendant un an après l'expédition.
Tampon de stockage:
PBS avec azoture de sodium à 0,02 % et glycérol à 50 % pH 7,3
L'aliquotage n'est pas nécessaire pour le stockage à -20C

*** Les 20ul contiennent 0,1% de BSA.

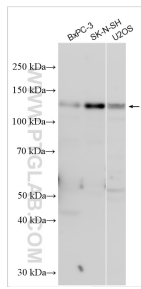
For technical support and original validation data for this product please contact:

T: 1 (888) 4PTGLAB (1-888-478-4522) (toll free in USA), or 1(312) 455-8498 (outside USA)

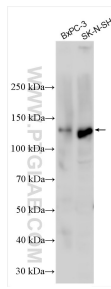
E: proteintech@ptglab.com
W: ptglab.com

This product is exclusively available under Proteintech Group brand and is not available to purchase from any other manufacturer.

Données de validation sélectionnées



Various lysates were subjected to SDS PAGE followed by western blot with 13141-1-AP (FGD1 antibody) at dilution of 1:500 incubated at room temperature for 1.5 hours.



Various lysates were subjected to SDS PAGE followed by western blot with 13141-1-AP (FGD1 antibody) at dilution of 1:300 incubated at room temperature for 1.5 hours.