

À des fins de recherche uniquement

Anticorps Polyclonal de lapin anti-PLS1



Numéro de catalogue: 13143-1-AP

Informations de base

Numéro de catalogue: 13143-1-AP	Numéro d'acquisition GenBank: BC031083	Méthode de purification: Purification par affinité contre l'antigène
Taille: 150ul , Concentration: 1000 µg/ml by Nanodrop;	Identification du gène (NCBI): 5357	Dilutions recommandées: WB 1:500-1:2000 IHC 1:200-1:800 IF 1:50-1:500
Hôte: Lapin	Nom complet: plastin 1 (I isoform)	
Isotype: IgG	MW calculé: 629 aa, 70 kDa	
Immunogen Catalog Number: AG3532	MW observés: 70 kDa	

Applications

Applications testées:
IF, IHC, WB, ELISA

Spécificité de l'espèce:
Humain, souris

Remarque-IHC: il est suggéré de démasquer l'antigène avec un tampon de TE buffer pH 9,0; (*) À défaut, 'le démasquage de l'antigène peut être effectué avec un tampon citrate pH 6,0.

Contrôles positifs:

WB : cellules A549, tissu de côlon de souris, tissu rénal de souris

IHC : tissu rénal humain,

IF : cellules A549,

Informations générales

PLS1 also known as Fimbrin, Plastin 1, is an actin-binding protein in the absence of calcium. In the inner ear, PLS1 is required for stereocilia formation. PLS1 Mediates liquid packing of actin filaments that is necessary for stereocilia to grow to their proper dimensions. PLS1 is specifically expressed at high levels in the small intestine, colon, and kidney; relatively expressed at lower levels in the lung and stomach(PMID: 8139549). PLS1 is required for normal hearing in humans and mice. Mutations in PLS1, encoding fimbrin, cause autosomal dominant nonsyndromic hearing loss(NSHL)(PMID: 31397523).

Stockage

Stockage:

Stocker à -20°C. Stable pendant un an après l'expédition.

Tampon de stockage:

PBS avec azoture de sodium à 0,02 % et glycérol à 50 % pH 7,3

L'aliquotage n'est pas nécessaire pour le stockage à -20C

*** Les 20ul contiennent 0,1% de BSA.

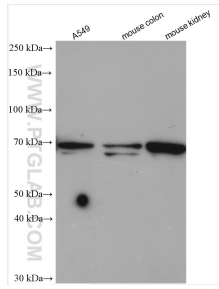
For technical support and original validation data for this product please contact:

T: 1 (888) 4PTGLAB (1-888-478-4522) (toll free in USA), or 1(312) 455-8498 (outside USA)

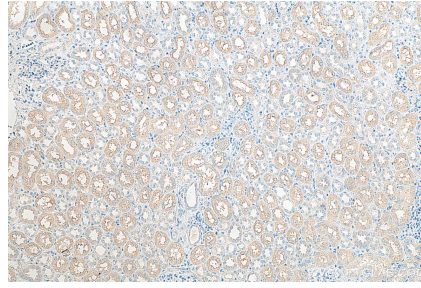
E: proteintech@ptglab.com
W: ptglab.com

This product is exclusively available under Proteintech Group brand and is not available to purchase from any other manufacturer.

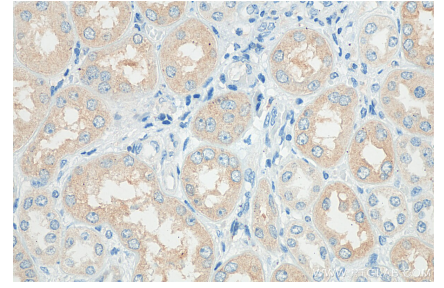
Données de validation sélectionnées



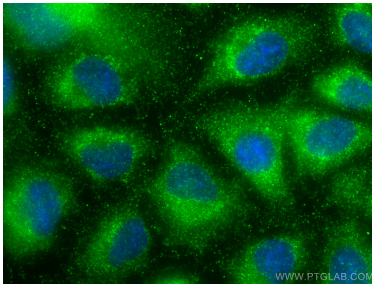
Various lysates were subjected to SDS PAGE followed by western blot with 13143-1-AP (PLS1 antibody) at dilution of 1:1000 incubated at room temperature for 1.5 hours.



Immunohistochemical analysis of paraffin-embedded human kidney tissue slide using 13143-1-AP (PLS1 antibody) at dilution of 1:400 (under 10x lens). Heat mediated antigen retrieval with Tris-EDTA buffer (pH 9.0).



Immunohistochemical analysis of paraffin-embedded human kidney tissue slide using 13143-1-AP (PLS1 antibody) at dilution of 1:400 (under 40x lens). Heat mediated antigen retrieval with Tris-EDTA buffer (pH 9.0).



Immunofluorescent analysis of (-20°C Methanol) fixed A549 cells using PLS1 antibody (13143-1-AP) at dilution of 1:200 and CoraLite®488-Conjugated AffiniPure Goat Anti-Rabbit IgG(H+L).