

À des fins de recherche uniquement

Anticorps Polyclonal de lapin anti-FOXM1



Numéro de catalogue: 13147-1-AP

Phare

62 Publications

Informations de base

Numéro de catalogue:

13147-1-AP

Taille:

150ul, Concentration: 600 µg/ml by Nanodrop;

Hôte:

Lapin

Isotype:

IgG

Immunogen Catalog Number:

AG3729

Numéro d'acquisition GenBank:

BC006192

Identification du gène (NCBI):

2305

Nom complet:

forkhead box M 1

MW calculé

83 kDa

MW observés:

110 kDa

Méthode de purification:

Purification par affinité contre l'antigène

Dilutions recommandées:

WB 1:2000-1:10000

IP 0.5-4.0 ug for IP and 1:500-1:1000 for WB

IHC 1:200-1:800

Applications

Applications testées:

IHC, IP, WB, ELISA

Demandes citées:

chIP, IP, RIP, WB

Spécificité de l'espèce:

Humain, souris

Espèces citées:

Humain, souris

Remarque-IHC: il est suggéré de démasquer l'antigène avec un tampon de TE buffer pH 9,0; (*) À défaut, le démasquage de l'antigène peut être effectué avec un tampon citrate pH 6,0.

Contrôles positifs:

WB : cellules HT-29, cellules A431, cellules HEK-293, cellules HeLa, cellules L02, cellules MCF-7, tissu de côlon de souris, tissu de thymus de souris, tissu splénique de souris, tissu testiculaire de souris, tissu testiculaire humain

IP : cellules L02,

IHC : tissu de cancer du pancréas humain, tissu de côlon humain

Informations générales

Forkhead box M1 (FOXM1), also named as HNF-3, HFH-11 or Trident, belongs to a superfamily of Fox transcription factors. FOXM1 is strongly associated with cell proliferation, it plays a important role in cell cycle progression by regulating both G1/S and G2/M phases, it is also involved in DNA damage repair, angiogenesis, apoptosis and tissue regeneration. Recently, crucial roles of this transcription factor were found in the development and progression of many cancers including colorectal, lung, prostate, liver and breast cancer. FOXM1 levels are significantly higher and associated with tumor grade in most human tumors, rendering it a potential target of cancer diagnosis and therapies. Catalog#13147-1-AP is a rabbit polyclonal antibody raised against C-terminal of human FOXM1. And this antibody can recognize three kinds of FOXM1, FOXM1-pp(-95-110kDa), FOXM1-B(isoform2, ~83kDa) and FOXM1A(isoform4, ~90kDa). Sometimes a molecular weight of about 65 kDa can also be observed, which may be a degradation form of FOXM1 (PMID: 26547933).

Publications notables

Autrice	Pubmed ID	Journal	Application
Junqi Fu	36133745	Mediators Inflamm	WB
Mingjie Zhang	26342429	Eur J Pharmacol	WB
Zhiwang Song	31598398	Am J Cancer Res	WB,IHC

Stockage

Stockage:

Stocker à -20°C. Stable pendant un an après l'expédition.

Tampon de stockage:

PBS avec azoture de sodium à 0,02 % et glycérol à 50 % pH 7,3

L'aliquotage n'est pas nécessaire pour le stockage à -20C

*** Les 20ul contiennent 0,1% de BSA.

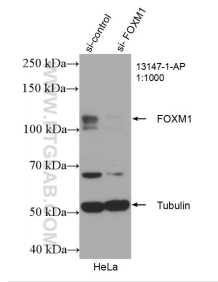
For technical support and original validation data for this product please contact:

T: 1 (888) 4PTGLAB (1-888-478-4522) (toll free in USA), or 1(312) 455-8498 (outside USA)

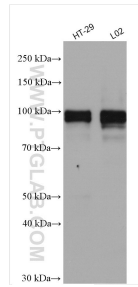
E: proteintech@ptglab.com
W: ptglab.com

This product is exclusively available under Proteintech Group brand and is not available to purchase from any other manufacturer.

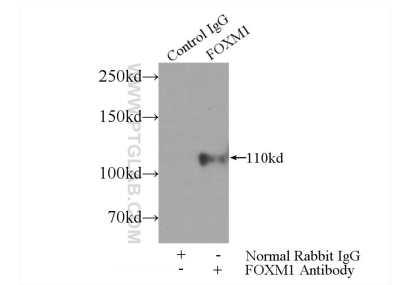
Données de validation sélectionnées



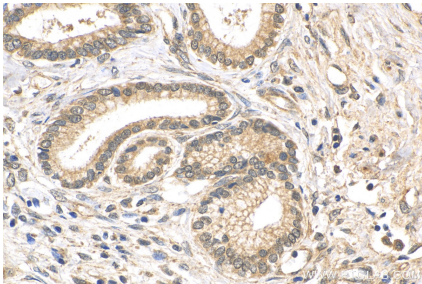
WB result of FOXM1 antibody (13147-1-AP; 1:1000; incubated at room temperature for 1.5 hours) with sh-Control and sh-FOXM1 transfected HeLa cells.



Various lysates were subjected to SDS PAGE followed by western blot with 13147-1-AP (FOXM1 antibody) at dilution of 1:5000 incubated at room temperature for 1.5 hours.



IP Result of anti-FOXM1 (IP:13147-1-AP, 5ug; Detection:13147-1-AP 1:700) with LO2 cells lysate 1560ug.



Immunohistochemical analysis of paraffin-embedded human pancreas cancer tissue slide using 13147-1-AP (FOXM1 antibody) at dilution of 1:400 (under 40x lens). Heat mediated antigen retrieval with Tris-EDTA buffer (pH 9.0).