

À des fins de recherche uniquement

# Anticorps Polyclonal de lapin anti-DCBLD2



Numéro de catalogue: 13168-1-AP

1 Publications

## Informations de base

Numéro de catalogue:  
13168-1-AP

Taille:  
150ul , Concentration: 300 µg/ml by Nanodrop and 180 µg/ml by Bradford method using BSA as the standard;

Hôte:  
Lapin

Isotype:  
IgG

Immunogen Catalog Number:  
AG3821

Numéro d'acquisition GenBank:  
BC029658

Identification du gène (NCBI):  
131566

Nom complet:  
discoidin, CUB and LCCL domain containing 2

MW calculé  
775 aa, 89 kDa

MW observés:  
93 kDa, 127 kDa

Méthode de purification:  
Purification par affinité contre l'antigène

Dilutions recommandées:  
WB 1:500-1:3000  
IP 0.5-4.0 µg for IP and 1:500-1:1000 for WB

## Applications

Applications testées:  
IP, WB, ELISA

Demandes citées:  
IHC, WB

Spécificité de l'espèce:  
Humain

Espèces citées:  
Humain

Contrôles positifs:

WB : cellules MKN-45, cellules U2OS, tissu cérébral humain, tissu hépatique humain

IP : cellules HepG2,

## Informations générales

DCBLD2, also known as ESDN or CLCP1, was first identified from human coronary arterial cells by a signal sequence trap method. DCBLD2 regulates proliferation, migration, and invasion in various tumors, including glioma, hypopharyngeal squamous cell carcinoma, and myxofibrosarcoma. The human DCBLD2 protein has a predicted molecular mass of 80 kDa based on its amino acid sequence, although it regularly displays an effective molecular mass of 130 kDa via SDS-PAGE (PMID: 30902898).

## Publications notables

Autrice	Pubmed ID	Journal	Application
Qiankun Zhu	36777511	Am J Cancer Res	WB,IHC

## Stockage

Stockage:  
Stocker à -20°C. Stable pendant un an après l'expédition.

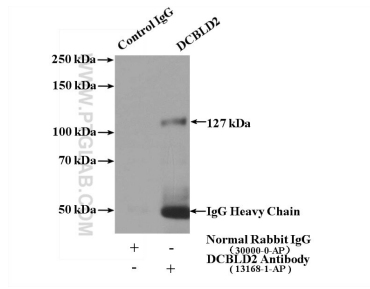
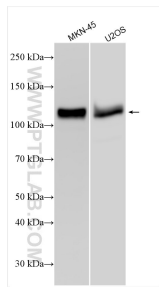
Tampon de stockage:  
PBS avec azoture de sodium à 0,02 % et glycérol à 50 % pH 7,3  
L'aliquotage n'est pas nécessaire pour le stockage à -20C

\*\*\* Les 20ul contiennent 0,1% de BSA.

For technical support and original validation data for this product please contact:  
T: 1 (888) 4PTGLAB (1-888-478-4522) (toll free in USA), or 1(312) 455-8498 (outside USA)  
E: proteintech@ptglab.com  
W: ptglab.com

This product is exclusively available under Proteintech Group brand and is not available to purchase from any other manufacturer.

## Données de validation sélectionnées



Various lysates were subjected to SDS PAGE followed by western blot with 13168-1-AP (DCBLD2 antibody) at dilution of 1:1500 incubated at room temperature for 1.5 hours.

IP Result of anti-DCBLD2 (IP:13168-1-AP, 4ug; Detection:13168-1-AP 1:500) with HepG2 cells lysate 2400ug.