

À des fins de recherche uniquement

Anticorps Polyclonal de lapin anti-STAT5A/B



Numéro de catalogue: 13179-1-AP

Phare

15 Publications

Informations de base

Numéro de catalogue:
13179-1-AP

Taille:
150ul, Concentration: 400 µg/ml by Nanodrop and 207 µg/ml by Bradford method using BSA as the standard;

Hôte:
Lapin

Isotype:
IgG

Immunogen Catalog Number:
AG3846

Numéro d'acquisition GenBank:
BC027036

Identification du gène (NCBI):
6776

Nom complet:
signal transducer and activator of transcription 5A

MW calculé:
794 aa, 92 kDa

MW observés:
90-95 kDa, 50-55 kDa

Méthode de purification:
Purification par affinité contre l'antigène

Dilutions recommandées:
WB 1:500-1:2000
IP 0.5-4.0 ug par IP and 1:500-1:2000 for WB
IHC 1:50-1:500

Applications

Applications testées:
FC, IHC, IP, WB, ELISA

Demandes citées:
IF, IHC, WB

Spécificité de l'espèce:
Humain, rat, souris

Espèces citées:
bovin, Humain, rat, souris, Vache

Remarque-IHC: il est suggéré de démasquer l'antigène avec un tampon de TE buffer pH 9,0; (*) A défaut, le démasquage de l'antigène peut être effectué avec un tampon citrate pH 6,0.

Contrôles positifs:

WB : cellules Daudi, cellules 3T3-L1, cellules DU 145, cellules K-562, cellules SGC-7901

IP : cellules 3T3-L1,

IHC : tissu de cancer du sein humain, tissu de cancer du col de l'utérus humain

Informations générales

STAT5A, also named as STAT5, belongs to the transcription factor STAT family. In response to cytokines and growth factors, STAT family members are phosphorylated by the receptor associated kinases, and then form homo- or heterodimers that translocate to the cell nucleus where they act as transcription activators. STAT5A is activated by, and mediates the responses of many cell ligands, such as IL2, IL3, IL7 GM-CSF, erythropoietin, thrombopoietin, and different growth hormones. Activation of STAT5A in myeloma and lymphoma associated with a TEL/JAK2 gene fusion is independent of cell stimulus and has been shown to be essential for the tumorigenesis. The mouse counterpart of human STAT5A is found to induce the expression of BCL2L1/BCL-X(L), which suggests the antiapoptotic function of STAT5A in cells. This antibody is a rabbit polyclonal antibody raised against residues near the C terminus of human STAT5A.

Publications notables

Autrice	Pubmed ID	Journal	Application
Yuezhu Zhang	31491605	Ecotoxicol Environ Saf	WB
Xiaolei Shi	36217946	J Agric Food Chem	WB
Xiaodi Gong	36524006	Front Oncol	IHC,WB

Stockage

Stockage:

Stocker à -20°C. Stable pendant un an après l'expédition.

Tampon de stockage:

PBS avec azoture de sodium à 0,02 % et glycérol à 50 % pH 7,3

L'aliquotage n'est pas nécessaire pour le stockage à -20C

*** Les 20ul contiennent 0,1% de BSA.

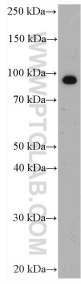
For technical support and original validation data for this product please contact:

T: 1 (888) 4PTGLAB (1-888-478-4522) (toll free in USA), or 1(312) 455-8498 (outside USA)

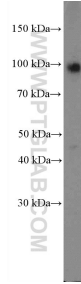
E: proteintech@ptglab.com
W: ptglab.com

This product is exclusively available under Proteintech Group brand and is not available to purchase from any other manufacturer.

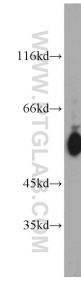
Données de validation sélectionnées



Daudi cells were subjected to SDS PAGE followed by western blot with 13179-1-AP (STAT5A/B antibody) at dilution of 1:1000 incubated at room temperature for 1.5 hours.



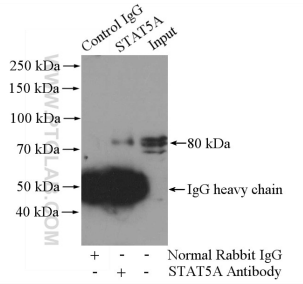
K-562 cells were subjected to SDS PAGE followed by western blot with 13179-1-AP (STAT5A/B Antibody) at dilution of 1:600 incubated at room temperature for 1.5 hours.



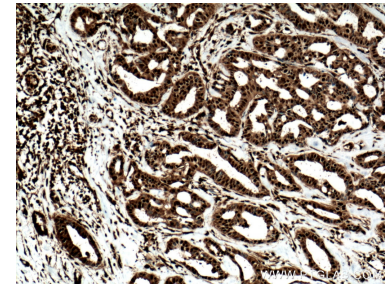
3T3-L1 cells were subjected to SDS PAGE followed by western blot with 13179-1-AP (STAT5A/B antibody) at dilution of 1:1000 incubated at room temperature for 1.5 hours.



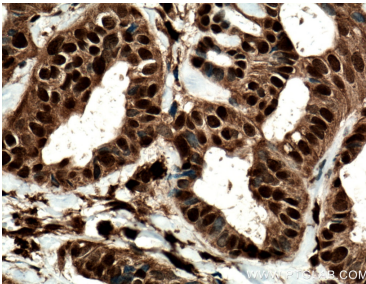
DU 145 cells were subjected to SDS PAGE followed by western blot with 13179-1-AP (STAT5A/B antibody) at dilution of 1:1000 incubated at room temperature for 1.5 hours.



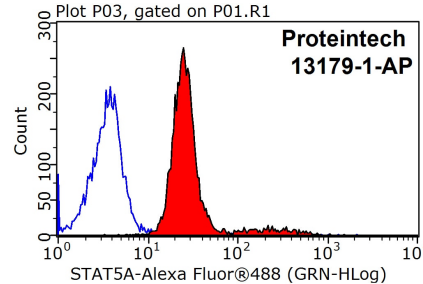
IP Result of anti-STAT5A/B (IP:13179-1-AP, 4ug; Detection:13179-1-AP 1:1000) with 3T3-L1 cells lysate 3200ug.



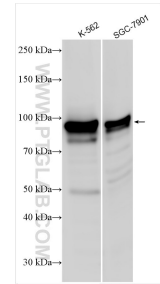
Immunohistochemical analysis of paraffin-embedded human breast cancer tissue slide using 13179-1-AP (STAT5A/B antibody) at dilution of 1:200 (under 10x lens). Heat mediated antigen retrieval with Tris-EDTA buffer (pH 9.0).



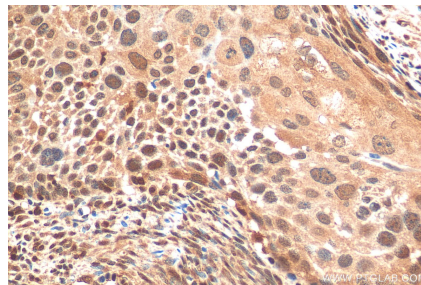
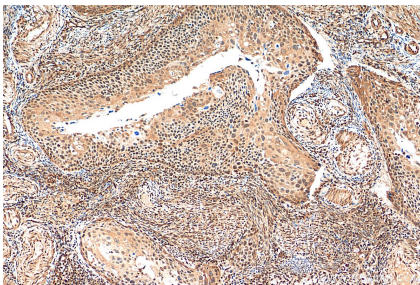
Immunohistochemical analysis of paraffin-embedded human breast cancer tissue slide using 13179-1-AP (STAT5A antibody) at dilution of 1:200 (under 40x lens). Heat mediated antigen retrieval with Tris-EDTA buffer (pH 9.0).



1X10⁶ MCF-7 cells were stained with 0.2ug STAT5A/B antibody (13179-1-AP, red) and control antibody (blue). Fixed with 90% MeOH blocked with 3% BSA (30 min). Alexa Fluor 488-conjugated AffiniPure Goat Anti-Rabbit IgG(H+L) with dilution 1:1500.



Various lysates were subjected to SDS PAGE followed by western blot with 13179-1-AP (STAT5A antibody) at dilution of 1:7000 incubated at room temperature for 1.5 hours.



Immunohistochemical analysis of paraffin-embedded human cervical cancer tissue slide using 13179-1-AP (STAT5A/B antibody) at dilution of 1:200 (under 10x lens). Heat mediated antigen retrieval with Tris-EDTA buffer (pH 9.0).

Immunohistochemical analysis of paraffin-embedded human cervical cancer tissue slide using 13179-1-AP (STAT5A antibody) at dilution of 1:200 (under 40x lens). Heat mediated antigen retrieval with Tris-EDTA buffer (pH 9.0).