

À des fins de recherche uniquement

# Anticorps Polyclonal de lapin anti-CLEC2D



Numéro de catalogue: 13188-1-AP

## Informations de base

<b>Numéro de catalogue:</b> 13188-1-AP	<b>Numéro d'acquisition GenBank:</b> BC019883	<b>Méthode de purification:</b> Purification par affinité contre l'antigène
<b>Taille:</b> 150ul , Concentration: 260 µg/ml by Nanodrop;	<b>Identification du gène (NCBI):</b> 29121	<b>Dilutions recommandées:</b> WB 1:500-1:1000
<b>Hôte:</b> Lapin	<b>Nom complet:</b> C-type lectin domain family 2, member D	
<b>Isotype:</b> IgG	<b>MW calculé</b> 154 aa, 18 kDa	
<b>Immunogen Catalog Number:</b> AG3862	<b>MW observés:</b> 33 kDa	

## Applications

<b>Applications testées:</b> WB, ELISA	<b>Contrôles positifs:</b> WB : cellules Daudi, cellules Jurkat, cellules MG U-87
<b>Spécificité de l'espèce:</b> Humain	

## Informations générales

CLEC2D (C-type lectin domain family 2 member D), also known as LLT1 (lectin-like transcript 1) or OCIL (Osteoclast inhibitory lectin), is a single-pass type II membrane protein expressed by hematopoietic cells and osteoblasts (PMID: 21930700; 14753741). Its expression was found to be tightly correlated with activation on T cells, NK cells, B cells, and DCs (PMID: 21930700). CLEC2D is a ligand for the human NKR-P1A (CD161) receptor and their interaction differentially regulates NK- and T-cell functions (PMID: 16339513, 16339512). It inhibits the formation and function of osteoclasts and modulates the release of interferon-gamma by human NK cells (PMID:14753741; 20415786).

## Stockage

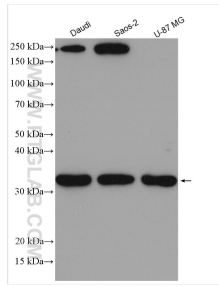
**Stockage:**  
Stocker à -20°C. Stable pendant un an après l'expédition.  
**Tampon de stockage:**  
PBS avec azoture de sodium à 0,02 % et glycérol à 50 % pH 7,3  
L'aliquotage n'est pas nécessaire pour le stockage à -20C

\*\*\* Les 20ul contiennent 0,1% de BSA.

For technical support and original validation data for this product please contact:  
T: 1 (888) 4PTGLAB (1-888-478-4522) (toll free in USA), or 1(312) 455-8498 (outside USA)  
E: proteintech@ptglab.com  
W: ptglab.com

This product is exclusively available under Proteintech Group brand and is not available to purchase from any other manufacturer.

## Données de validation sélectionnées



Various lysates were subjected to SDS PAGE followed by western blot with 13188-1-AP (CLEC2D antibody) at dilution of 1:500 incubated at room temperature for 1.5 hours.