

À des fins de recherche uniquement

Anticorps Polyclonal de lapin anti-PPM1B



Numéro de catalogue: 13193-1-AP

4 Publications

Informations de base

| | | |
|---|--|--|
| Numéro de catalogue: 13193-1-AP | Numéro d'acquisition GenBank: BC012002 | Méthode de purification: Purification par affinité contre l'antigène |
| Taille: 150ul , Concentration: 700 µg/ml by Nanodrop; | Identification du gène (NCBI): 5495 | Dilutions recommandées: WB 1:1000-1:4000 |
| Hôte: Lapin | Nom complet: protein phosphatase 1B (formerly 2C), magnesium-dependent, beta isoform | IHC 1:20-1:200 IF 1:50-1:500 |
| Isotype: IgG | MW calculé 479 aa, 53 kDa | |
| Immunogen Catalog Number: AG3871 | MW observés: 36, 53 kDa | |

Applications

Applications testées:

IF, IHC, WB, ELISA

Demandes citées:

Cell treatment, IF, IP

Spécificité de l'espèce:

Humain, souris

Espèces citées:

Humain, souris

Contrôles positifs:

WB : cellules HeLa, cellules MCF-7

IHC : tissu de cancer du sein humain, tissu de muscle squelettique humain

IF : cellules MCF-7,

Remarque-IHC: il est suggéré de démasquer l'antigène avec un tampon de TE buffer pH 9,0; (*) À défaut, 'le démasquage de l'antigène peut être effectué avec un tampon citrate pH 6,0.

Informations générales

PPM1B is a member of the metal-dependent serine/threonine protein phosphatase (PPM) family with important regulatory functions in cellular signalling pathways (PMID: 18066953). PPM1B is also an important negative regulator of several stress signalling pathways and has been shown to negatively regulate the stress-activated p38 and JNK pathways by directly dephosphorylating upstream signalling proteins (PMID: 9824284). Moreover, PPM1B has also been shown to prevent cell death by negatively regulating necrotic cell death in a RIP3 dephosphorylation-dependent manner. (PMID: 25751141) PPM1B can be detected as the WM of 36-55 kDa.

Publications notables

| Autrice | Pubmed ID | Journal | Application |
|-------------------|-----------|-----------------|----------------------|
| Xin Li | 28361952 | Nat Commun | WB,IP |
| Paula Bollmann | 33597873 | Front Pharmacol | WB |
| Katyayane Neopane | 36543129 | Cell Rep | IF,IP,Cell treatment |

Stockage

Stockage:

Stocker à -20°C. Stable pendant un an après l'expédition.

Tampon de stockage:

PBS avec azoture de sodium à 0,02 % et glycérol à 50 % pH 7,3

L'aliquotage n'est pas nécessaire pour le stockage à -20C

*** Les 20ul contiennent 0,1% de BSA.

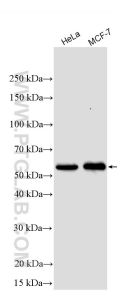
For technical support and original validation data for this product please contact:

T: 1 (888) 4PTGLAB (1-888-478-4522) (toll free in USA), or 1(312) 455-8498 (outside USA)

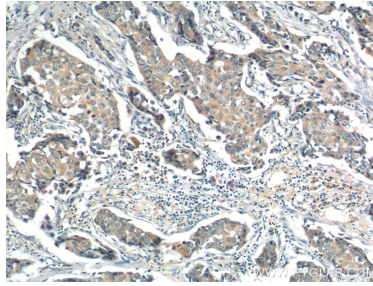
E: proteintech@ptglab.com
W: ptglab.com

This product is exclusively available under Proteintech Group brand and is not available to purchase from any other manufacturer.

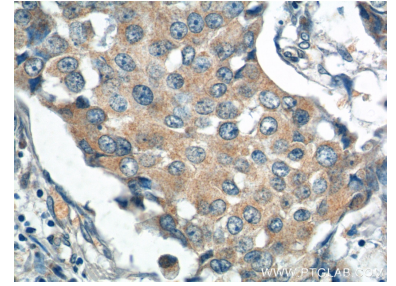
Données de validation sélectionnées



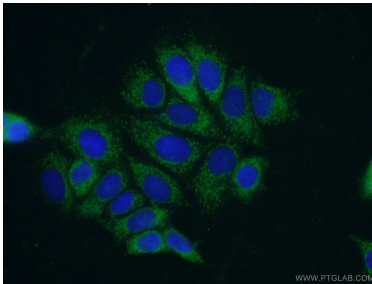
Various lysates were subjected to SDS PAGE followed by western blot with 13193-1-AP (PPM1B antibody) at dilution of 1:2000 incubated at room temperature for 1.5 hours.



Immunohistochemical analysis of paraffin-embedded human breast cancer tissue slide using 13193-1-AP (PPM1B Antibody) at dilution of 1:200 (under 10x lens).



Immunohistochemical analysis of paraffin-embedded human breast cancer tissue slide using 13193-1-AP (PPM1B Antibody) at dilution of 1:200 (under 40x lens).



Immunofluorescent analysis of (-20°C Ethanol) fixed MCF-7 cells using 13193-1-AP (PPM1B antibody) at dilution of 1:50 and Alexa Fluor 488-conjugated AffiniPure Goat Anti-Rabbit IgG(H+L).