

À des fins de recherche uniquement

Anticorps Polyclonal de lapin anti-DCLRE1B



Numéro de catalogue: 13203-1-AP

1 Publications

Informations de base

Numéro de catalogue:

13203-1-AP

Taille:

150ul , Concentration: 550 µg/ml by Nanodrop and 307 µg/ml by Bradford method using BSA as the standard;

Hôte:

Lapin

Isotype:

IgG

Immunogen Catalog Number:

AG3945

Numéro d'acquisition GenBank:

BC029687

Identification du gène (NCBI):

64858

Nom complet:

DNA cross-link repair 1B (PSO2 homolog, *S. cerevisiae*)

MW calculé

532 aa, 60 kDa

MW observés:

60 kDa

Méthode de purification:

Purification par affinité contre l'antigène

Dilutions recommandées:

WB 1:500-1:1000

IF 1:50-1:500

Applications

Applications testées:

IF, WB, ELISA

Demandes citées:

WB

Spécificité de l'espèce:

Humain, rat, souris

Espèces citées:

Humain

Contrôles positifs:

WB : cellules Jurkat, cellules HepG2

IF : cellules HepG2,

Informations générales

Interstrand cross-links (ICLs) is an extremely cytotoxic form of DNA damage that covalently tethers the two strands of the double helix, which inhibits fundamental nuclear functions, including transcription and DNA replication [PMID:21701511]. DCLRE1B is one of several evolutionarily conserved genes involved in repair of interstrand cross-links [PMID:10848582]. Furthermore, DCLRE1B was identified as a TRF2-interacting protein and, has a role in telomere maintenance in association with the Shelterin complex, preventing non-homologous end-joining-mediated chromosome fusions protecting leading strand telomeres [PMID:20619712].

Publications notables

Autrice	Pubmed ID	Journal	Application
Nazareno Bona	37580626	Nat Struct Mol Biol	WB

Stockage

Stockage:

Stocker à -20°C. Stable pendant un an après l'expédition.

Tampon de stockage:

PBS avec azoture de sodium à 0,02 % et glycérol à 50 % pH 7,3

L'aliquotage n'est pas nécessaire pour le stockage à -20C

*** Les 20ul contiennent 0,1% de BSA.

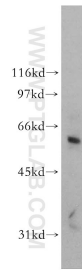
For technical support and original validation data for this product please contact:

T: 1 (888) 4PTGLAB (1-888-478-4522) (toll free in USA), or 1(312) 455-8498 (outside USA)

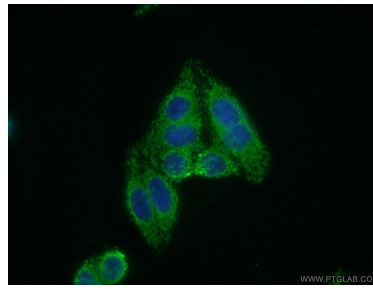
E: proteintech@ptglab.com
W: ptglab.com

This product is exclusively available under Proteintech Group brand and is not available to purchase from any other manufacturer.

Données de validation sélectionnées



Jurkat cells were subjected to SDS PAGE followed by western blot with 13203-1-AP (DCLRE1B antibody) at dilution of 1:800 incubated at room temperature for 1.5 hours.



Immunofluorescent analysis of (10% Formaldehyde) fixed HepG2 cells using 13203-1-AP (DCLRE1B antibody) at dilution of 1:50 and Alexa Fluor 488-conjugated AffiniPure Goat Anti-Rabbit IgG(H+L).