

À des fins de recherche uniquement

# Anticorps Polyclonal de lapin anti-AK3L1



Numéro de catalogue: 13206-1-AP

Phare

1 Publications

## Informations de base

Numéro de catalogue:

13206-1-AP

Numéro d'acquisition GenBank:

BC040224

Méthode de purification:

Purification par affinité contre l'antigène

Taille:

150ul, Concentration: 900 µg/ml by Nanodrop and 513 µg/ml by Bradford method using BSA as the standard;

Identification du gène (NCBI):

205

Dilutions recommandées:

WB 1:500-1:3600  
IP 0.5-4.0 ug for IP and 1:200-1:1000 for WB  
IHC 1:50-1:500  
IF 1:50-1:500

Hôte:

Lapin

Nom complet:

adenylate kinase 3-like 1

MW calculé

223 aa, 25 kDa

Isotype:

IgG

MW observés:

30 kDa

Immunogen Catalog Number:

AG3966

## Applications

Applications testées:

IF, IHC, IP, WB, ELISA

Contrôles positifs:

WB: cellules MCF7, tissu hépatique humain

Demandes citées:

WB

IP: cellules MCF-7,

Spécificité de l'espèce:

Humain, souris

IHC: tissu de cancer du sein humain,

Espèces citées:

Humain

IF: cellules MCF-7,

**Remarque-IHC: il est suggéré de démasquer l'antigène avec un tampon de TE buffer pH 9,0; (\*) A défaut, le démasquage de l'antigène peut être effectué avec un tampon citrate pH 6,0.**

## Informations générales

AK3L1 (Adenylate kinase 3-like) is also named as AK4, AK3L1 and belongs to the adenylate kinase family. It catalyzes the reversible transfer of the terminal phosphate group between ATP and AMP. It is important for maintenance of homeostasis of the adenine and guanine nucleotide pools. Expression is highest in kidney and heart, moderate in liver, weak in brain, and barely detectable in placenta and lung by northern blot (PMID:11485571). This antibody may also recognize AK3 due to the high homology.

## Publications notables

Autrice	Pubmed ID	Journal	Application
Chunbao Zang	30479565	Cancer Cell Int	WB

## Stockage

Stockage:

Stocker à -20°C. Stable pendant un an après l'expédition.

Tampon de stockage:

PBS avec azoture de sodium à 0,02 % et glycérol à 50 % pH 7,3

L'aliquotage n'est pas nécessaire pour le stockage à -20C

\*\*\* Les 20ul contiennent 0,1% de BSA.

For technical support and original validation data for this product please contact:

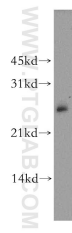
T: 1 (888) 4PTGLAB (1-888-478-4522) (toll free in USA), or 1(312) 455-8498 (outside USA)

E: [proteintech@ptglab.com](mailto:proteintech@ptglab.com)

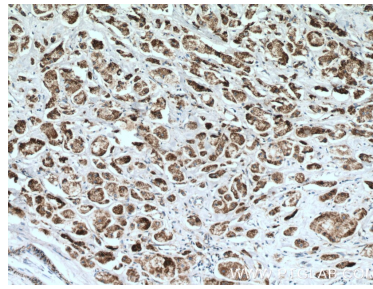
W: [ptglab.com](http://ptglab.com)

This product is exclusively available under Proteintech Group brand and is not available to purchase from any other manufacturer.

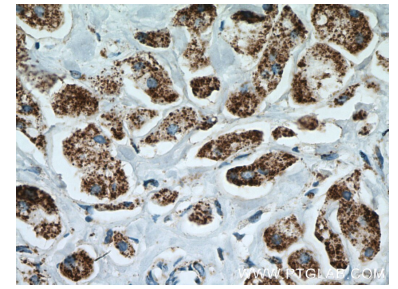
## Données de validation sélectionnées



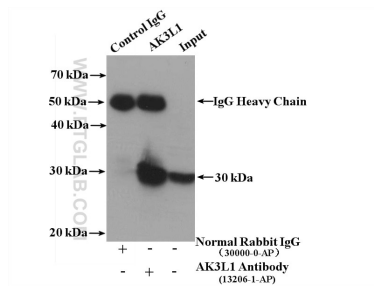
MCF-7 cells were subjected to SDS PAGE followed by western blot with 13206-1-AP (AK3L1 antibody) at dilution of 1:400 incubated at room temperature for 1.5 hours.



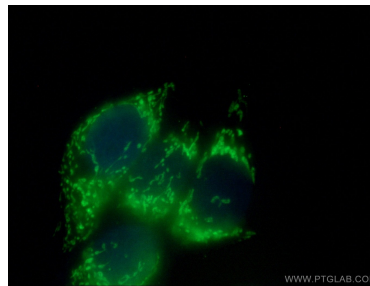
Immunohistochemical analysis of paraffin-embedded human breast cancer tissue slide using 13206-1-AP (AK3L1 antibody) at dilution of 1:200 (under 10x lens. Heat mediated antigen retrieval with Tris-EDTA buffer (pH 9.0).



Immunohistochemical analysis of paraffin-embedded human breast cancer tissue slide using 13206-1-AP (AK3L1 antibody) at dilution of 1:200 (under 40x lens. Heat mediated antigen retrieval with Tris-EDTA buffer (pH 9.0).



IP result of anti-AK3L1 (IP:13206-1-AP, 4ug; Detection:13206-1-AP 1:300) with MCF-7 cells lysate 3200 ug.



Immunofluorescent analysis of (4% PFA) fixed MCF-7 cells using 13206-1-AP (AK3L1 antibody) at dilution of 1:100 and CoraLite488-Conjugated AffiniPure Goat Anti-Rabbit IgG(H+L).