

À des fins de recherche uniquement

# Anticorps Polyclonal de lapin anti-UBA6



Numéro de catalogue: 13211-1-AP

Phare

1 Publications

## Informations de base

Numéro de catalogue: 13211-1-AP	Numéro d'acquisition GenBank: BC031637	Méthode de purification: Purification par affinité contre l'antigène
Taille: 150ul , Concentration: 400 µg/ml by Nanodrop and 267 µg/ml by Bradford method using BSA as the standard;	Identification du gène (NCBI): 55236	Dilutions recommandées: WB 1:1000-1:5000 IHC 1:50-1:500 IF 1:50-1:500
Hôte: Lapin	Nom complet: ubiquitin-like modifier activating enzyme 6	
Isotype: IgG	MW calculé 1052 aa, 118 kDa	
Immunogen Catalog Number: AG4000	MW observés: 118 kDa	

## Applications

### Applications testées:

IF, IHC, WB, ELISA

### Demandes citées:

IHC, IP, WB

### Spécificité de l'espèce:

Humain, souris

### Espèces citées:

Humain, souris

**Remarque-IHC: il est suggéré de démasquer l'antigène avec un tampon de TE buffer pH 9,0; (\*) A défaut, 'le démasquage de l'antigène peut être effectué avec un tampon citrate pH 6,0.**

### Contrôles positifs:

WB : cellules HEK-293, tissu cérébral humain

IHC : tissu testiculaire de souris, tissu cérébral de souris

IF : cellules SH-SY5Y,

## Informations générales

UBA6 (Ubiquitin-like modifier-activating enzyme 6) is also named as MOP4, UBE1L2 and belongs to the ubiquitin-activating E1 family. It probably acts as a single molecule like UBE1 and not as a heterodimeric E1 complex, as formed by AOS1/Uba2 and APP-BP1/Uba3. UBA6 is even more restricted in distribution because it is only found in vertebrates but not in lower organisms so that it might have a specialized role in tissues of higher organisms, and in particular, in the testis, where it is expressed by far most abundantly. (PMID:17580310). It has 4 isoforms produced by alternative splicing. This antibody recognizes the full-length (118 kDa) and the truncated isoform CRA\_b (60-70 kDa) of UBA6 (NCBI).

## Publications notables

Autrice	Pubmed ID	Journal	Application
Lei Zhang	36109526	Nat Commun	WB, IHC, IP

## Stockage

### Stockage:

Stocker à -20°C. Stable pendant un an après l'expédition.

### Tampon de stockage:

PBS avec azote de sodium à 0,02 % et glycérol à 50 % pH 7,3

L'aliquotage n'est pas nécessaire pour le stockage à -20C

\*\*\* Les 20ul contiennent 0,1% de BSA.

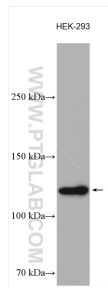
For technical support and original validation data for this product please contact:

T: 1 (888) 4PTGLAB (1-888-478-4522) (toll free in USA), or 1(312) 455-8498 (outside USA)

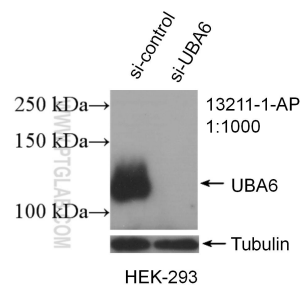
E: proteintech@ptglab.com  
W: ptglab.com

This product is exclusively available under Proteintech Group brand and is not available to purchase from any other manufacturer.

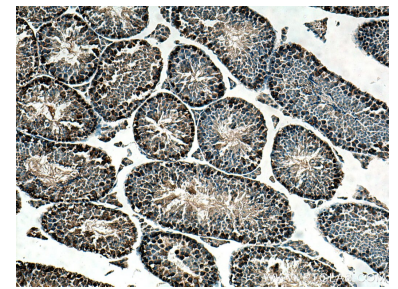
## Données de validation sélectionnées



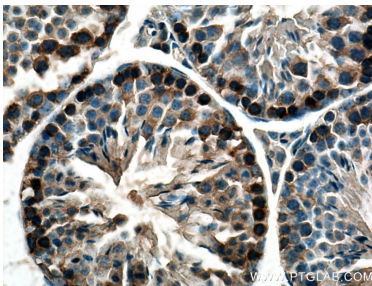
HEK-293 cells were subjected to SDS PAGE followed by western blot with 13211-1-AP (UBA6 antibody) at dilution of 1:2500 incubated at room temperature for 1.5 hours.



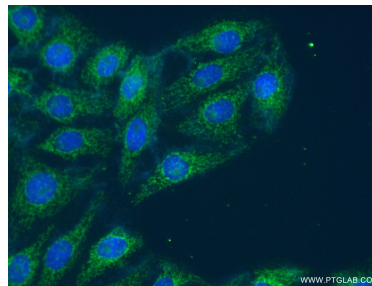
WB result of UBA6 antibody (13211-1-AP; 1:1000; incubated at room temperature for 1.5 hours) with sh-Control and sh-UBA6 transfected HEK-293 cells.



Immunohistochemical analysis of paraffin-embedded mouse testis tissue slide using 13211-1-AP (UBA6 antibody) at dilution of 1:200 (under 10x lens). Heat mediated antigen retrieval with Tris-EDTA buffer (pH 9.0).



Immunohistochemical analysis of paraffin-embedded mouse testis tissue slide using 13211-1-AP (UBA6 antibody) at dilution of 1:200 (under 40x lens). Heat mediated antigen retrieval with Tris-EDTA buffer (pH 9.0).



Immunofluorescent analysis of (4% PFA) fixed SH-SY5Y cells using 13211-1-AP (UBA6 antibody) at dilution of 1:50 and Alexa Fluor 488-conjugated AffiniPure Goat Anti-Rabbit IgG(H+L).