

À des fins de recherche uniquement

Anticorps Polyclonal de lapin anti-RPGRIP1



Numéro de catalogue: 13214-1-AP

Phare

1 Publications

Informations de base

Numéro de catalogue: 13214-1-AP	Numéro d'acquisition GenBank: BC039089	Méthode de purification: Purification par affinité contre l'antigène
Taille: 150ul, Concentration: 550 µg/ml by Nanodrop and 413 µg/ml by Bradford method using BSA as the standard;	Identification du gène (NCBI): 57096	Dilutions recommandées: WB 1:500-1:1000 IHC 1:50-1:500
Hôte: Lapin	Nom complet: retinitis pigmentosa GTPase regulator interacting protein 1	
Isotype: IgG	MW calculé: 147 kDa	
Immunogen Catalog Number: AG4089	MW observés: 70 kDa	

Applications

Applications testées:

IHC, WB, ELISA

Demandes citées:

IF, WB

Spécificité de l'espèce:

Humain, souris

Espèces citées:

souris

Remarque-IHC: il est suggéré de démasquer l'antigène avec un tampon de TE buffer pH 9,0; (*) À défaut, le démasquage de l'antigène peut être effectué avec un tampon citrate pH 6,0.

Contrôles positifs:

WB : cellules Y79, cellules HEK-293, cellules HL-60

IHC : tissu oculaire de souris, tissu testiculaire de souris

Informations générales

RPGRIP1 is a photoreceptor protein that interacts with retinitis pigmentosa GTPase regulator protein and is a key component of cone and rod photoreceptor cells. The biological functions of RPGRIP1 are complex. Mutations in this gene lead to autosomal recessive congenital blindness. In the eye, it is expressed in amacrine neurons and photoreceptors, and in numerous other tissues, albeit at greatly reduced levels. Moreover, it exists multiple isoforms with species-specific subcellular localization patterns, and the different isoforms perform cell-specific functions. Within photoreceptors, RPGRIP1 localizes predominantly to outer segments (OS) of rods and cones in humans, whereas in bovine eyes, it is found only in rod OS. In contrast, in mice, RPGRIP1 is found primarily in connecting cilia (CC), where it localizes between the ciliary axoneme and the plasma membrane. RPGRIP1 has multiple isoforms with MW 147 kDa, 70-76 kDa, 103 kDa, and 66 kDa.

Publications notables

Autrice	Pubmed ID	Journal	Application
Antonia Wiegner	29650680	EMBO J	WB,IF

Stockage

Stockage:

Stocker à -20°C. Stable pendant un an après l'expédition.

Tampon de stockage:

PBS avec azoture de sodium à 0,02 % et glycérol à 50 % pH 7,3

L'aliquotage n'est pas nécessaire pour le stockage à -20C

*** Les 20ul contiennent 0,1% de BSA.

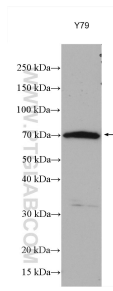
For technical support and original validation data for this product please contact:

T: 1 (888) 4PTGLAB (1-888-478-4522) (toll free in USA), or 1(312) 455-8498 (outside USA)

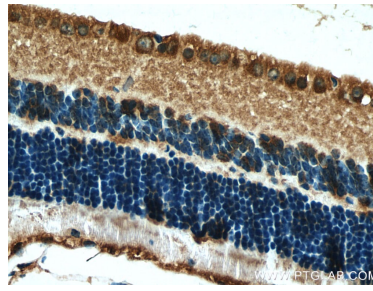
E: proteintech@ptglab.com
W: ptglab.com

This product is exclusively available under Proteintech Group brand and is not available to purchase from any other manufacturer.

Données de validation sélectionnées



Y79 cells were subjected to SDS PAGE followed by western blot with 13214-1-AP (RPGRIP1 antibody) at dilution of 1:500 incubated at room temperature for 1.5 hours.



Immunohistochemical analysis of paraffin-embedded mouse eye tissue slide using 13214-1-AP (RPGRIP1 antibody) at dilution of 1:200 (under 40x lens). Heat mediated antigen retrieval with Tris-EDTA buffer (pH 9.0).



Immunohistochemical analysis of paraffin-embedded mouse eye tissue slide using 13214-1-AP (RPGRIP1 antibody) at dilution of 1:200 (under 10x lens). Heat mediated antigen retrieval with Tris-EDTA buffer (pH 9.0).