

À des fins de recherche uniquement

Anticorps Polyclonal de lapin anti-PACSIN1



Numéro de catalogue: 13219-1-AP

1 Publications

Informations de base

Numéro de catalogue: 13219-1-AP	Numéro d'acquisition GenBank: BC040228	Méthode de purification: Purification par affinité contre l'antigène
Taille: 150ul, Concentration: 850 µg/ml by Nanodrop and 393 µg/ml by Bradford method using BSA as the standard;	Identification du gène (NCBI): 29993	Dilutions recommandées: WB 1:500-1:2000 IHC 1:50-1:500 IF 1:20-1:200
Hôte: Lapin	Nom complet: protein kinase C and casein kinase substrate in neurons 1	
Isotype: IgG	MW calculé: 444 aa, 51 kDa	
Immunogen Catalog Number: AG4102	MW observés: 48-51 kDa	

Applications

Applications testées:

IF, IHC, WB, ELISA

Demandes citées:

IHC

Spécificité de l'espèce:

Humain, rat, souris

Espèces citées:

Humain

Remarque-IHC: il est suggéré de démasquer l'antigène avec un tampon de TE buffer pH 9,0; (*) A défaut, 'le démasquage de l'antigène peut être 'effectué avec un tampon citrate pH 6,0.

Contrôles positifs:

WB : tissu de cervelet de souris, tissu cérébral de souris

IHC : tissu cérébral humain,

IF : cellules SH-SY5Y,

Informations générales

PACSIN1 (also known as syndapin-1) is a member of the protein kinase C and casein kinase substrate in neurons (PACSIN) family. In mammals, the PACSIN family is comprised of three members, PACSIN1, PACSIN2, and PACSIN3 (PMID: 34990060). PACSIN1 is expressed mainly in neurons, whereas PACSIN2 is ubiquitously expressed in all tissues, and PACSIN3 is expressed mainly in skeletal muscle and the heart (PMID: 23668323). All of these three members contain an N-terminal F-BAR domain and a C-terminal SH3 domain. PACSIN1 plays a role in endocytosis and endosomal recycling. Meanwhile, it has a role in actin remodeling and microtubule nucleation and also plays a particular role in membrane shaping and reconstruction (PMID: 23035120; 34422904). PACSIN1 is involved in neuromorphogenesis and the regulation of the nervous system, and the inappropriate expression of PACSIN1 has been associated with some neurological diseases, including schizophrenia, Alzheimer's disease, and Huntington's disease (PMID: 34990060).

Publications notables

Autrice	Pubmed ID	Journal	Application
Zhou Zimu	34422904	Front Mol Biosci	IHC

Stockage

Stockage:

Stocker à -20°C. Stable pendant un an après l'expédition.

Tampon de stockage:

PBS avec azoture de sodium à 0,02 % et glycérol à 50 % pH 7,3

L'aliquotage n'est pas nécessaire pour le stockage à -20C

*** Les 20ul contiennent 0,1% de BSA.

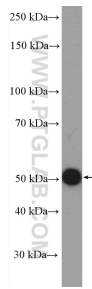
For technical support and original validation data for this product please contact:

T: 1 (888) 4PTGLAB (1-888-478-4522) (toll free in USA), or 1(312) 455-8498 (outside USA)

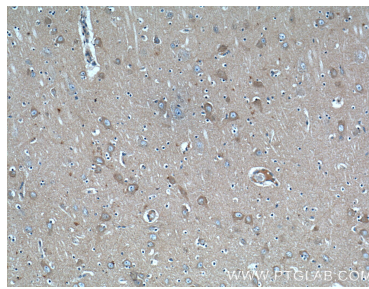
E: proteintech@ptglab.com
W: ptglab.com

This product is exclusively available under Proteintech Group brand and is not available to purchase from any other manufacturer.

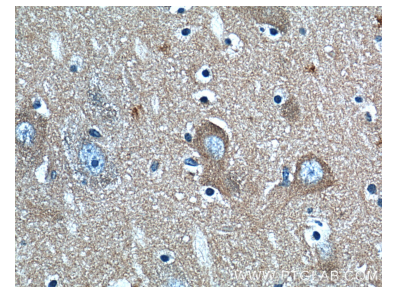
Données de validation sélectionnées



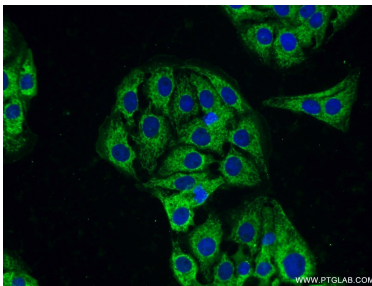
mouse cerebellum tissue were subjected to SDS PAGE followed by western blot with 13219-1-AP (PACSIN1 Antibody) at dilution of 1:1000 incubated at room temperature for 1.5 hours.



Immunohistochemical analysis of paraffin-embedded human brain tissue slide using 13219-1-AP (PACSIN1 Antibody) at dilution of 1:200 (under 10x lens).



Immunohistochemical analysis of paraffin-embedded human brain tissue slide using 13219-1-AP (PACSIN1 Antibody) at dilution of 1:200 (under 40x lens).



Immunofluorescent analysis of SH-SY5Y cells using 13219-1-AP (PACSIN1 antibody) at dilution of 1:50 and Alexa Fluor 488-conjugated AffiniPure Goat Anti-Rabbit IgG(H+L).