

À des fins de recherche uniquement

Anticorps Polyclonal de lapin anti-MLXIPL



Numéro de catalogue: 13256-1-AP

11 Publications

Informations de base

Numéro de catalogue:

13256-1-AP

Taille:

150ul, Concentration: 500 µg/ml by Nanodrop and 280 µg/ml by Bradford method using BSA as the standard;

Hôte:

Lapin

Isotype:

IgG

Immunogen Catalog Number:

AG3481

Numéro d'acquisition GenBank:

BC012925

Identification du gène (NCBI):

51085

Nom complet:

MLX interacting protein-like

MW calculé

852 aa, 93 kDa

MW observés:

65 kDa

Méthode de purification:

Purification par affinité contre l'antigène

Dilutions recommandées:

WB 1:500-1:2000

IP 0.5-4.0 ug for IP and 1:500-1:2000 for WB

Applications

Applications testées:

IP, WB, ELISA

Demandes citées:

IF, IHC, WB

Spécificité de l'espèce:

Humain

Espèces citées:

Humain, souris

Contrôles positifs:

WB : cellules HepG2, cellules HeLa, tissu hépatique humain

IP : cellules HepG2,

Informations générales

Carbohydrate response element-binding protein (ChREBP), also known as MLXIPL, is a glucose-responsive transcription factor that has a fundamental role in the glucose-mediated induction of genes involved in hepatic glycolysis and lipogenesis. Circulating blood glucose levels affect ChREBP activity in hepatocytes largely by post-translational mechanisms that include phosphorylation-dependent subcellular localization [PMID:21665952]. It enhances expression of the liver pyruvate kinase (LPK) gene and all lipogenic enzyme genes resulting in the conversion of excess dietary carbohydrate into triglycerides that can be stored as fat [PMID:15118080]. Molecular Weight of ChREBP splice variants: 62/78/91/93 kDa.

Publications notables

Autrice	Pubmed ID	Journal	Application
Yongyao Gao	35620283	Front Pharmacol	
Wenxi He	31076985	Dig Dis Sci	WB
Dandan Wang	33950051	Food Funct	WB

Stockage

Stockage:

Stocker à -20°C. Stable pendant un an après l'expédition.

Tampon de stockage:

PBS avec azoture de sodium à 0,02 % et glycérol à 50 % pH 7,3

L'aliquotage n'est pas nécessaire pour le stockage à -20C

*** Les 20ul contiennent 0,1% de BSA.

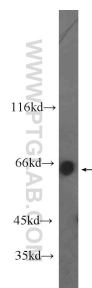
For technical support and original validation data for this product please contact:

T: 1 (888) 4PTGLAB (1-888-478-4522) (toll free in USA), or 1(312) 455-8498 (outside USA)

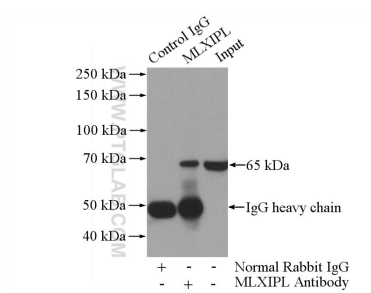
E: proteintech@ptglab.com
W: ptglab.com

This product is exclusively available under Proteintech Group brand and is not available to purchase from any other manufacturer.

Données de validation sélectionnées



HepG2 cells were subjected to SDS PAGE followed by western blot with 13256-1-AP (MLXIPL antibody) at dilution of 1:1000 incubated at room temperature for 1.5 hours.



IP Result of anti-MLXIPL (IP:13256-1-AP, 4ug; Detection:13256-1-AP 1:1000) with HepG2 cells lysate 3600ug.