

À des fins de recherche uniquement

# Anticorps Polyclonal de lapin anti-TEAD1



Numéro de catalogue: 13283-1-AP

Phare

9 Publications

## Informations de base

Numéro de catalogue:

13283-1-AP

Taille:

150ul , Concentration: 800 µg/ml by Nanodrop and 400 µg/ml by Bradford method using BSA as the standard;

Hôte:

Lapin

Isotype:

IgG

Immunogen Catalog Number:

AG4082

Numéro d'acquisition GenBank:

BC026959

Identification du gène (NCBI):

7003

Nom complet:

TEA domain family member 1 (SV40 transcriptional enhancer factor)

MW calculé

426 aa, 47, 9 kDa

MW observés:

52 kDa

Méthode de purification:

Purification par affinité contre l'antigène

Dilutions recommandées:

WB 1:500-1:1500

## Applications

Applications testées:

WB, ELISA

Demandes citées:

IF, WB

Spécificité de l'espèce:

Humain, souris

Espèces citées:

Humain, rat

Contrôles positifs:

WB : cellules BGC-823, cellules A375, cellules C2C12

## Informations générales

TEAD1 belongs to a protein family that share the TEA/ATTS domain. It acts as a transcriptional factor by binding to the GT-IIC and Sph(I 1 II) enhancers in the simian virus 40 (SV40) enhancer. Also it can modulate SV40 late transcription together with large T antigen. The transcriptional activity of TEAD1 required several regions of the proteins , a TBP-associated factors and a limiting transcriptional intermediary factors. TEAD1 also preforms an essential role in the Hippo signaling pathway. TEAD1 regulates gene expression of YAP1 and WWTR1/TAZ, thus mediating cell proliferation, migration and epithelial mesenchymal transition induction. TEAD is preferentially expressed in skeletal muscle. Lower levels in pancreas, placenta, and heart.

## Publications notables

Autrice	Pubmed ID	Journal	Application
Chunli Lin	28892790	Biomed Pharmacother	WB
Jian-Jia Cao	25175178	Oncol Rep	WB
Rina Fujiwara-Tani	32481659	Int J Mol Sci	WB

## Stockage

Stockage:

Stocker à -20°C. Stable pendant un an après l'expédition.

Tampon de stockage:

PBS avec azoture de sodium à 0,02 % et glycérol à 50 % pH 7,3

L'aliquotage n'est pas nécessaire pour le stockage à -20C

\*\*\* Les 20ul contiennent 0,1% de BSA.

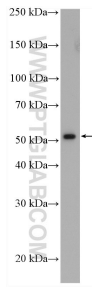
For technical support and original validation data for this product please contact:

T: 1 (888) 4PTGLAB (1-888-478-4522) (toll free in USA), or 1(312) 455-8498 (outside USA)

E: proteintech@ptglab.com  
W: ptglab.com

This product is exclusively available under Proteintech Group brand and is not available to purchase from any other manufacturer.

## Données de validation sélectionnées



BGC-823 cells were subjected to SDS PAGE followed by western blot with 13283-1-AP (TEAD1 antibody) at dilution of 1:600 incubated at room temperature for 1.5 hours.