

À des fins de recherche uniquement

Anticorps Polyclonal de lapin anti-GHRL



Numéro de catalogue: 13309-1-AP

5 Publications

Informations de base

Numéro de catalogue: 13309-1-AP	Numéro d'acquisition GenBank: BC025791	Méthode de purification: Purification par affinité contre l'antigène
Taille: 150ul, Concentration: 400 µg/ml by Nanodrop and 273 µg/ml by Bradford method using BSA as the standard;	Identification du gène (NCBI): 51738	Dilutions recommandées: WB 1:200-1:1000 IHC 1:200-1:800
Hôte: Lapin	Nom complet: ghrelin/obestatin prepropeptide	
Isotype: IgG	MW calculé: 117 aa, 13 kDa	
Immunogen Catalog Number: AG4141	MW observés: 13 kDa	

Applications

Applications testées:

IHC, WB, ELISA

Demandes citées:

IHC, WB

Spécificité de l'espèce:

Humain, rat, souris

Espèces citées:

Humain, rat, souris

Remarque-IHC: il est suggéré de démasquer l'antigène avec un tampon de TE buffer pH 9,0; (*) A défaut, le démasquage de l'antigène peut être effectué avec un tampon citrate pH 6,0.

Contrôles positifs:

WB : tissu d'estomac humain,

IHC : tissu d'estomac humain, tissu d'estomac de rat

Informations générales

GHRL encodes ghrelin-obestatin preproprotein, which generates ghrelin and obestatin. Ghrelin is predominantly produced in endocrine cells in the gastric mucosa, called X/A-like or ghrelin cells, from where it is secreted into the plasma. In the pituitary gland, ghrelin stimulates GH release and regulates food intake and energy metabolism. Obestatin was initially reported to be an endogenous ligand for the orphan G protein-coupled receptor GPR39 and was involved in satiety and decreased food intake; however, these findings are controversial. Recent reports show that obestatin is involved in inhibiting thirst and anxiety, improving memory, regulating sleep, affecting cell proliferation, and increasing the secretion of pancreatic juice enzymes.

Publications notables

Autrice	Pubmed ID	Journal	Application
Ping Ma	34710756	Phytomedicine	WB
Jing-Wei Xing	33913930	Neuroreport	IHC
	28984792	Pancreas	WB

Stockage

Stockage:

Stocker à -20°C. Stable pendant un an après l'expédition.

Tampon de stockage:

PBS avec azoture de sodium à 0,02 % et glycérol à 50 % pH 7,3

L'aliquotage n'est pas nécessaire pour le stockage à -20°C

*** Les 20ul contiennent 0,1% de BSA.

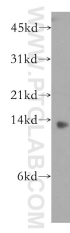
For technical support and original validation data for this product please contact:

T: 1 (888) 4PTGLAB (1-888-478-4522) (toll free in USA), or 1(312) 455-8498 (outside USA)

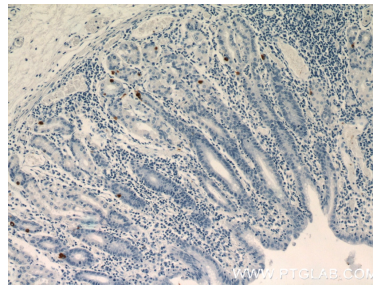
E: proteintech@ptglab.com
W: ptglab.com

This product is exclusively available under Proteintech Group brand and is not available to purchase from any other manufacturer.

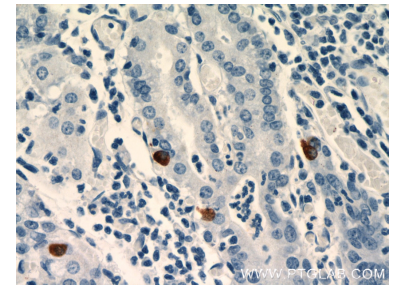
Données de validation sélectionnées



human stomach tissue were subjected to SDS PAGE followed by western blot with 13309-1-AP (GHRL antibody) at dilution of 1:400 incubated at room temperature for 1.5 hours.



Immunohistochemical analysis of paraffin-embedded human stomach slide using 13309-1-AP (GHRL Antibody) at dilution of 1:400.



Immunohistochemical analysis of paraffin-embedded human stomach slide using 13309-1-AP (GHRL Antibody) at dilution of 1:400.