

À des fins de recherche uniquement

Anticorps Polyclonal de lapin anti-CSDE1



Numéro de catalogue: 13319-1-AP

Phare

4 Publications

Informations de base

Numéro de catalogue: 13319-1-AP	Numéro d'acquisition GenBank: BC032446	Méthode de purification: Purification par affinité contre l'antigène
Taille: 150ul, Concentration: 500 µg/ml by Nanodrop and 147 µg/ml by Bradford method using BSA as the standard;	Identification du gène (NCBI): 7812	Dilutions recommandées: WB 1:2000-1:14000 IHC 1:50-1:500 IF 1:50-1:500
Hôte: Lapin	Nom complet: cold shock domain containing E1, RNA-binding	
Isotype: IgG	MW calculé: 798 aa, 89 kDa	
Immunogen Catalog Number: AG4173	MW observés: 89 kDa	

Applications

Applications testées:

IF, IHC, WB, ELISA

Demandes citées:

WB

Spécificité de l'espèce:

Humain, souris

Espèces citées:

Humain, souris

Remarque-IHC: il est suggéré de démasquer l'antigène avec un tampon de TE buffer pH 9,0; (*) A défaut, 'le démasquage de l'antigène peut être effectué avec un tampon citrate pH 6,0.

Contrôles positifs:

WB : cellules A431, cellules HEK-293, cellules HeLa

IHC : tissu de cancer du foie humain,

IF : cellules HeLa,

Informations générales

CSDE1 (Cold shock domain-containing protein E1), also known as UNR (upstream of N-ras), is an RNA-binding protein involved in the regulation of messenger RNA stability and internal initiation of translation. It is required for internal initiation of translation of human rhinovirus RNA. UNR may be involved in translationally coupled mRNA turnover. Reduced expression of UNR impairs proliferation and differentiation of erythroid blasts. Recent study found that UNR acts as a positive or negative regulator of cell death, depending on the cell type, suggesting manipulation of UNR level may constitute a specific approach to sensitize cancer cells to anticancer treatments.

Publications notables

Autrice	Pubmed ID	Journal	Application
Joel I Perez-Perri	30352994	Nat Commun	WB
Joel I Perez-Perri	33208978	Nat Protoc	WB
Nedal Taha	36016420	Viruses	WB

Stockage

Stockage:

Stocker à -20°C. Stable pendant un an après l'expédition.

Tampon de stockage:

PBS avec azoture de sodium à 0,02 % et glycérol à 50 % pH 7,3

L'aliquotage n'est pas nécessaire pour le stockage à -20C

*** Les 20ul contiennent 0,1% de BSA.

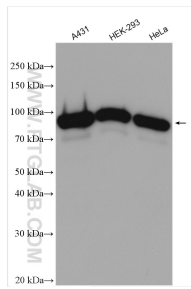
For technical support and original validation data for this product please contact:

T: 1 (888) 4PTGLAB (1-888-478-4522) (toll free in USA), or 1(312) 455-8498 (outside USA)

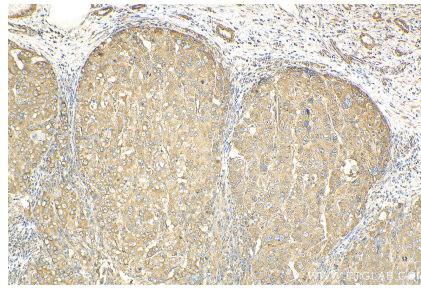
E: proteintech@ptglab.com
W: ptglab.com

This product is exclusively available under Proteintech Group brand and is not available to purchase from any other manufacturer.

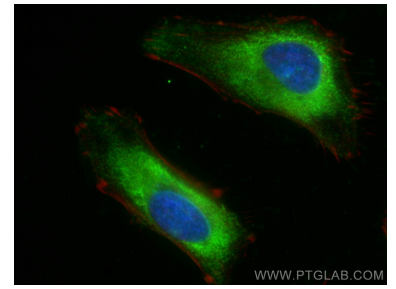
Données de validation sélectionnées



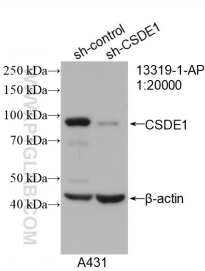
Various lysates were subjected to SDS PAGE followed by western blot with 13319-1-AP (CSDE1 antibody) at dilution of 1:7000 incubated at room temperature for 1.5 hours.



Immunohistochemical analysis of paraffin-embedded human liver cancer tissue slide using 13319-1-AP (CSDE1 antibody) at dilution of 1:200 (under 10x Lens). Heat mediated antigen retrieval with Tris-EDTA buffer (pH 9.0).



Immunofluorescent analysis of (-20°C Ethanol) fixed HeLa cells using CSDE1 antibody (13319-1-AP) at dilution of 1:200 and CoraLite@488-Conjugated AffiniPure Goat Anti-Rabbit IgG(H+L), CL594-Phalloidin (red).



WB result of CSDE1 antibody (13319-1-AP; 1:20000; incubated at room temperature for 1.5 hours) with sh-Control and sh-CSDE1 transfected A431 cells.