

À des fins de recherche uniquement

# Anticorps Polyclonal de lapin anti-BUB1



Numéro de catalogue: 13330-1-AP

7 Publications

## Informations de base

<b>Numéro de catalogue:</b> 13330-1-AP	<b>Numéro d'acquisition GenBank:</b> BC028201	<b>Méthode de purification:</b> Purification par affinité contre l'antigène
<b>Taille:</b> 150ul , Concentration: 330 µg/ml by Nanodrop;	<b>Identification du gène (NCBI):</b> 699	<b>Dilutions recommandées:</b> WB 1:500-1:1000 IF 1:20-1:200
<b>Hôte:</b> Lapin	<b>Nom complet:</b> budding uninhibited by benzimidazoles 1 homolog (yeast)	
<b>Isotype:</b> IgG	<b>MW calculé</b> 1085 aa, 122 kDa	
<b>Immunogen Catalog Number:</b> AG4138	<b>MW observés:</b> 45 kDa, 120 kDa	

## Applications

<b>Applications testées:</b> IF, WB, ELISA	<b>Contrôles positifs:</b> WB : cellules K-562, cellules HeLa IF : cellules IMR-90, cellules MDCK
<b>Demandes citées:</b> IF, IHC, WB	
<b>Spécificité de l'espèce:</b> canin, Humain	
<b>Espèces citées:</b> Humain	

## Informations générales

Bub1 is an evolutionarily conserved mitotic checkpoint control protein that is present in diverse organisms including yeast and humans. Bub1 is a serine/threonine protein kinase and is required for recruitment of Mad1, Mad2, Bub3, and CENP-E to kinetochores. Full-length Bub1 protein was cleaved to an 45 kDa fragment and an intermediate fragment of 90 kDa, only detected at early stages of apoptosis execution, indicating cleavage of Bub1 in the amino- and carboxy-terminal regions of the protein(PMID:15818396).

## Publications notables

Autrice	Pubmed ID	Journal	Application
Xie Mengyan	36176446	Front Pharmacol	WB
Junjie Piao	30898709	Gene	IHC
Liang Chen	35659274	J Exp Clin Cancer Res	WB

## Stockage

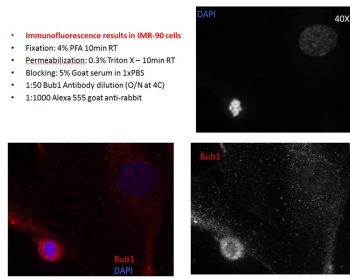
**Stockage:**  
Stocker à -20°C. Stable pendant un an après l'expédition.  
**Tampon de stockage:**  
PBS avec azoture de sodium à 0,02 % et glycérol à 50 % pH 7,3  
L'aliquotage n'est pas nécessaire pour le stockage à -20C

\*\*\* Les 20ul contiennent 0,1% de BSA.

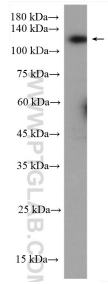
For technical support and original validation data for this product please contact:  
T: 1 (888) 4PTGLAB (1-888-478-4522) (toll free in USA), or 1(312) 455-8498 (outside USA)  
E: proteintech@ptglab.com  
W: ptglab.com

This product is exclusively available under Proteintech Group brand and is not available to purchase from any other manufacturer.

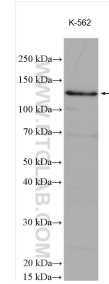
## Données de validation sélectionnées



IF results of BUB1 antibody with IMR-90 cells by M.S. Grasiella Angelina Andriani Cristina Montagna Lab at Albert Einstein College of Medicine-Bronx - NY.



MKN-45 cells were subjected to SDS PAGE followed by western blot with 13330-1-AP (BUB1 antibody) at dilution of 1:300 incubated at room temperature for 1.5 hours.



K-562 cells were subjected to SDS PAGE followed by western blot with 13330-1-AP (BUB1 antibody) at dilution of 1:800 incubated at room temperature for 1.5 hours.