

À des fins de recherche uniquement

Anticorps Polyclonal de lapin anti-CD300LF



Numéro de catalogue: 13334-1-AP

1 Publications

Informations de base

Numéro de catalogue:

13334-1-AP

Taille:

150ul, Concentration: 650 µg/ml by Nanodrop and 300 µg/ml by Bradford method using BSA as the standard;

Hôte:

Lapin

Isotype:

IgG

Immunogen Catalog Number:

AG4150

Numéro d'acquisition GenBank:

BC028199

Identification du gène (NCBI):

146722

Nom complet:

CD300 molecule-like family member f

MW calculé

290 aa, 32 kDa

MW observés:

30-34 kDa

Méthode de purification:

Purification par affinité contre l'antigène

Dilutions recommandées:

WB 1:500-1:1000

IP 0.5-4.0 ug for IP and 1:500-1:3000 for WB

Applications

Applications testées:

IP, WB, ELISA

Demandes citées:

WB

Spécificité de l'espèce:

Humain

Espèces citées:

souris

Contrôles positifs:

WB : cellules Jurkat, cellules U-937

IP : cellules K-562,

Informations générales

CD300LF, also known as CLM1 (CMRF35-like molecule 1), is a member of the CD300 protein family. Members of this family are cell surface glycoproteins with a single IgV-like extracellular domain, and are involved in the regulation of immune response. CD300LF is an inhibitory receptor that has been shown to inhibit various inflammatory processes in myeloid cells, such as macrophages and mast cells.

Publications notables

Autrice	Pubmed ID	Journal	Application
Dmitry N Grigoryev	26285698	BMC Pulm Med	WB

Stockage

Stockage:

Stocker à -20°C. Stable pendant un an après l'expédition.

Tampon de stockage:

PBS avec azoture de sodium à 0,02 % et glycérol à 50 % pH 7,3

L'aliquotage n'est pas nécessaire pour le stockage à -20C

*** Les 20ul contiennent 0,1% de BSA.

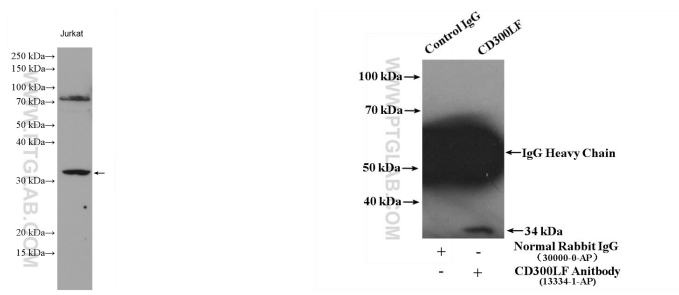
For technical support and original validation data for this product please contact:

T: 1 (888) 4PTGLAB (1-888-478-4522) (toll free in USA), or 1(312) 455-8498 (outside USA)

E: proteintech@ptglab.com
W: ptglab.com

This product is exclusively available under Proteintech Group brand and is not available to purchase from any other manufacturer.

Données de validation sélectionnées



Jurkat cells were subjected to SDS PAGE followed by western blot with 13334-1-AP (CD300LF antibody) at dilution of 1:500 incubated at room temperature for 1.5 hours.

IP Result of anti-CD300LF (IP:13334-1-AP, 4ug; Detection:13334-1-AP 1:1500) with K-562 cells lysate 4000ug.