

À des fins de recherche uniquement

Anticorps Polyclonal de lapin anti-KIR3DL1



Numéro de catalogue: 13335-1-AP

1 Publications

Informations de base

Numéro de catalogue:
13335-1-AP

Taille:
150ul, Concentration: 350 µg/ml by Nanodrop and 233 µg/ml by Bradford method using BSA as the standard;

Hôte:
Lapin

Isotype:
IgG

Immunogen Catalog Number:
AG4152

Numéro d'acquisition GenBank:
BC028206

Identification du gène (NCBI):
3811

Nom complet:
killer cell immunoglobulin-like receptor, three domains, long cytoplasmic tail, 1

MW calculé
444 aa, 49 kDa

MW observés:
49 kDa

Méthode de purification:
Purification par affinité contre l'antigène

Dilutions recommandées:
WB 1:500-1:1000

Applications

Applications testées:
FC, WB, ELISA

Spécificité de l'espèce:
Humain

Contrôles positifs:

WB : tissu hépatique humain,

Informations générales

Killer cell immunoglobulin-like receptors (KIRs) are transmembrane glycoproteins expressed by natural killer cells and subsets of T cells. The KIR proteins are classified by the number of extracellular immunoglobulin domains (2D or 3D) and by whether they have a long (L) or short (S) cytoplasmic domain. KIR3DL1 is a receptor on natural killer (NK) cells for HLA Bw4 allele. It inhibits the activity of NK cells thus preventing cell lysis. KIR3DL1 and KIR3DS1 are highly homologous. This antibody is raised against 22-344 amino acids of human KIR3DL1 and recognizes both KIR3DL1 (49 kDa) and KIR3DS1 (43 kDa).

Publications notables

Autrice	Pubmed ID	Journal	Application
Akihiro Doi	30421793	Clin Exp Immunol	

Stockage

Stockage:
Stocker à -20°C. Stable pendant un an après l'expédition.

Tampon de stockage:
PBS avec azoture de sodium à 0,02 % et glycérol à 50 % pH 7,3
L'aliquotage n'est pas nécessaire pour le stockage à -20C

*** Les 20ul contiennent 0,1% de BSA.

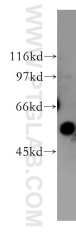
For technical support and original validation data for this product please contact:

T: 1 (888) 4PTGLAB (1-888-478-4522) (toll free in USA), or 1(312) 455-8498 (outside USA)

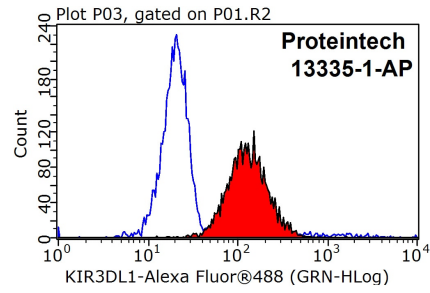
E: proteintech@ptglab.com
W: ptglab.com

This product is exclusively available under Proteintech Group brand and is not available to purchase from any other manufacturer.

Données de validation sélectionnées



human liver tissue were subjected to SDS PAGE followed by western blot with 13335-1-AP (KIR3DL1 antibody) at dilution of 1:500 incubated at room temperature for 1.5 hours.



1×10^6 Jurkat cells were stained with 0.2ug KIR3DL1 antibody (13335-1-AP, red) and control antibody (blue). Fixed with 90% MeOH blocked with 3% BSA (30 min). Alexa Fluor 488-conjugated AffiniPure Goat Anti-Rabbit IgG(H+L) with dilution 1:1000.