

À des fins de recherche uniquement

Anticorps Polyclonal de lapin anti-MCM6



Numéro de catalogue: 13347-2-AP

Phare

19 Publications

Informations de base

Numéro de catalogue:
13347-2-AP

Taille:
150ul, Concentration: 800 µg/ml by Nanodrop and 333 µg/ml by Bradford method using BSA as the standard;

Hôte:
Lapin

Isotype:
IgG

Immunogen Catalog Number:
AG4180

Numéro d'acquisition GenBank:
BC032374

Identification du gène (NCBI):
4175

Nom complet:
minichromosome maintenance complex component 6

MW calculé
821 aa, 93 kDa

MW observés:
105 kDa

Méthode de purification:
Purification par affinité contre l'antigène

Dilutions recommandées:
WB 1:2000-1:16000
IP 0.5-4.0 ug par IP and 1:500-1:2000 for WB
IHC 1:50-1:500
IF 1:50-1:500

Applications

Applications testées:
IF, IHC, IP, WB, ELISA

Demandes citées:
IF, IHC, WB

Spécificité de l'espèce:
Humain, rat, souris

Espèces citées:
Humain, souris

Remarque-IHC: il est suggéré de démasquer l'antigène avec un tampon de TE buffer pH 9.0; (*) À défaut, 'le démasquage de l'antigène peut être effectué avec un tampon citrate pH 6,0.

Contrôles positifs:

WB : cellules COLO 320, cellules HeLa, tissu de thymus de souris, tissu ovarien de souris, tissu splénique de souris

IP : cellules HeLa,

IHC : tissu de cancer du col de l'utérus humain, tissu de cancer du poumon humain

IF : cellules HeLa,

Informations générales

The MCM genes were firstly identified in yeast defective in minichromosome maintenance and have since been shown to have roles in the progression of the cell cycle, and most of them are cell division control genes [PMID: 18096807]. MCM2-7 complex are suggested to be 'DNA licensing factors' which bind to the DNA after mitosis and enable DNA replication before being removed during S phase. Mini-chromosome maintenance 6 (MCM6) is one component of the MCM2-7 complex which is the putative replicative helicase essential for 'once per cell cycle' DNA replication initiation and elongation in eukaryotic cells [PMID: 9305914]. MCM6 single subunit forms homohexamers and contains an ATP-dependent and replication fork stimulated 3' to 5' DNA unwinding activity along with intrinsic DNA-dependent ATPase and ATP-binding activities [PMID: 21336027]. The calculated molecular weight of MCM6 is 92 kDa, but the modified MCM6 is about 105 kDa.

Publications notables

Autrice	Pubmed ID	Journal	Application
Qing Yuan	25378924	Int J Nanomedicine	WB
Yi-Zhen Liu	29151950	J Cancer	IHC
Minhong Shen	35121987	Nat Cancer	WB

Stockage

Stockage:

Stocker à -20°C. Stable pendant un an après l'expédition.

Tampon de stockage:

PBS avec azoture de sodium à 0,02 % et glycérol à 50 % pH 7,3

L'aliquotage n'est pas nécessaire pour le stockage à -20C

*** Les 20ul contiennent 0,1% de BSA.

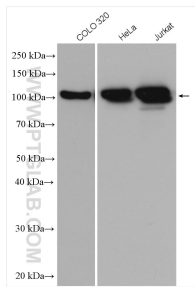
For technical support and original validation data for this product please contact:

T: 1 (888) 4PTGLAB (1-888-478-4522) (toll free in USA), or 1(312) 455-8498 (outside USA)

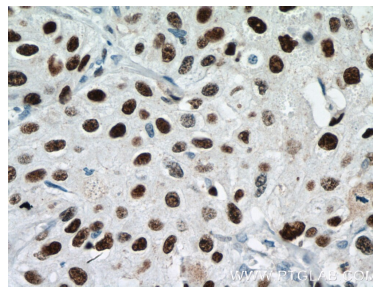
E: proteintech@ptglab.com
W: ptglab.com

This product is exclusively available under Proteintech Group brand and is not available to purchase from any other manufacturer.

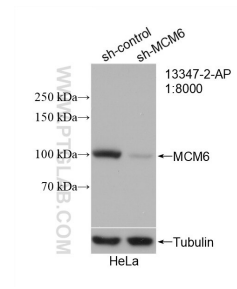
Données de validation sélectionnées



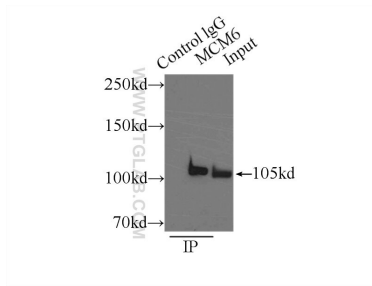
COLO 320 cells were subjected to SDS PAGE followed by western blot with 13347-2-AP (MCM6 antibody) at dilution of 1:8000 incubated at room temperature for 1.5 hours.



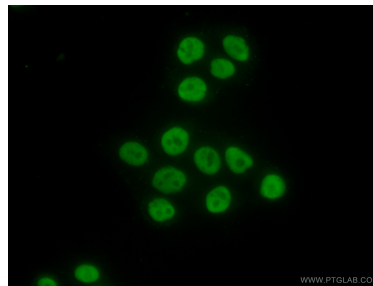
Immunohistochemical analysis of paraffin-embedded human cervical cancer tissue slide using 13347-2-AP (MCM6 antibody) at dilution of 1:200 (under 40x lens. Heat mediated antigen retrieval with Tris-EDTA buffer (pH 9.0)).



WB result of MCM6 antibody (13347-2-AP; 1:8000; incubated at room temperature for 1.5 hours) with sh-Control and sh-MCM6 transfected HeLa cells.



IP Result of anti-MCM6 (IP:13347-2-AP, 3ug; Detection:13347-2-AP 1:1000) with HeLa cells lysate 3800ug.



Immunofluorescent analysis of (10% Formaldehyde) fixed HeLa cells using 13347-2-AP (MCM6 antibody) at dilution of 1:50 and Alexa Fluor 488-conjugated AffiniPure Goat Anti-Rabbit IgG(H+L).