

À des fins de recherche uniquement

Anticorps Polyclonal de lapin anti-IL-16



Numéro de catalogue: 13352-1-AP

Informations de base

Numéro de catalogue:

13352-1-AP

Taille:

150ul, Concentration: 133 µg/ml by Bradford method using BSA as the standard;

Hôte:

Lapin

Isotype:

IgG

Immunogen Catalog Number:

AG4044

Numéro d'acquisition GenBank:

BC040272

Identification du gène (NCBI):

3603

Nom complet:

interleukin 16 (lymphocyte chemoattractant factor)

MW calculé

130 aa, 15 kDa

Méthode de purification:

Purification par affinité contre l'antigène

Applications

Applications testées:

IHC, ELISA

Spécificité de l'espèce:

Humain

Informations générales

IL-16 is a pleiotropic cytokine that functions as a chemoattractant, a modulator of T cell activation, and an inhibitor of HIV replication. It is mainly produced by T lymphocytes but also by other immune cells, neuronal cells, fibroblasts and epithelial cells. The signaling process of this cytokine is mediated by CD4. IL-16 induces chemotaxis of CD4+ cells such as lymphocytes, eosinophils, and dendritic cells by ligating CD4 directly at a site distinct from other ligands. Among its multiple functions, IL-16 is a T cell chemoattractant involved in T helper cell inflammatory responses and the regulation of both T cell growth, and responsiveness to regulatory cytokines. The cytokine function is exclusively attributed to the secreted C-terminal peptide, while the N-terminal product may play a role in cell cycle control.

Stockage

Stockage:

Stocker à -20°C. Stable pendant un an après l'expédition.

Tampon de stockage:

PBS avec azoture de sodium à 0,02 % et glycérol à 50 % pH 7,3

L'aliquotage n'est pas nécessaire pour le stockage à -20C

*** Les 20ul contiennent 0,1% de BSA.

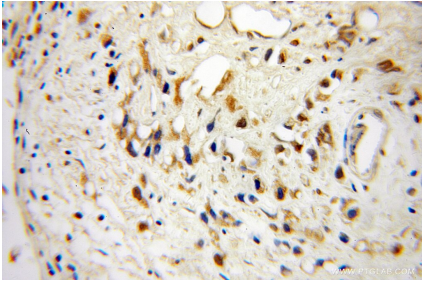
For technical support and original validation data for this product please contact:

T: 1 (888) 4PTGLAB (1-888-478-4522) (toll free in USA), or 1(312) 455-8498 (outside USA)

E: proteintech@ptglab.com
W: ptglab.com

This product is exclusively available under Proteintech Group brand and is not available to purchase from any other manufacturer.

Données de validation sélectionnées



Immunohistochemical analysis of paraffin-embedded human prostate cancer using 13352-1-AP (IL-16 antibody) at dilution of 1:100 (under 10x lens).