

À des fins de recherche uniquement

Anticorps Polyclonal de lapin anti-p107



Numéro de catalogue: 13354-1-AP

Phare

13 Publications

Informations de base

Numéro de catalogue:

13354-1-AP

Taille:

150ul, Concentration: 600 µg/ml by Nanodrop and 367 µg/ml by Bradford method using BSA as the standard;

Hôte:

Lapin

Isotype:

IgG

Immunogen Catalog Number:

AG4146

Numéro d'acquisition GenBank:

BC032247

Identification du gène (NCBI):

5933

Nom complet:

retinoblastoma-like 1 (p107)

MW calculé

1068 aa, 119 kDa

MW observés:

119 kDa

Méthode de purification:

Purification par affinité contre l'antigène

Dilutions recommandées:

WB 1:500-1:2000

IP 0.5-4.0 ug for IP and 1:500-1:1000 for WB

Applications

Applications testées:

IP, WB, ELISA

Demandes citées:

IP, WB

Spécificité de l'espèce:

Humain, rat, souris

Espèces citées:

Humain, souris, primate non humain

Contrôles positifs:

WB : tissu testiculaire de souris, cellules COLO 320

IP : tissu testiculaire de souris,

Informations générales

Retinoblastoma-like protein 1, also named RBL1, p107, is a member of E1A-binding proteins, which contains a A/B pocket, or pRb. Via this structure, RBL1 can bind to viral oncoproteins and other proteins containing LXCXE motif. It regulates cell proliferation via phosphorylation-sensitive interactions with E2F transcription factors and other proteins. Key regulator of entry into cell division. Directly involved in heterochromatin formation by maintaining overall chromatin structure and, in particular, that of constitutive heterochromatin by stabilizing histone methylation. Recruits and targets histone methyltransferases SUV420H1 and SUV420H2, leading to epigenetic transcriptional repression. (uniprot). It has been reported there are two transcripts variants of RBL1, which encode a 119-kd protein and a 68-kd protein (PMID:7490090).

Publications notables

Autrice	Pubmed ID	Journal	Application
Xiaoman Chen	30207732	Mol Pharm	WB
Dong Pan	34604239	Front Cell Dev Biol	WB
Debasmita Bhattacharya	34645816	Nat Commun	WB, IP

Stockage

Stockage:

Stocker à -20°C. Stable pendant un an après l'expédition.

Tampon de stockage:

PBS avec azoture de sodium à 0,02 % et glycérol à 50 % pH 7,3

L'aliquotage n'est pas nécessaire pour le stockage à -20°C

*** Les 20ul contiennent 0,1% de BSA.

For technical support and original validation data for this product please contact:

T: 1 (888) 4PTGLAB (1-888-478-4522) (toll free in USA), or 1(312) 455-8498 (outside USA)

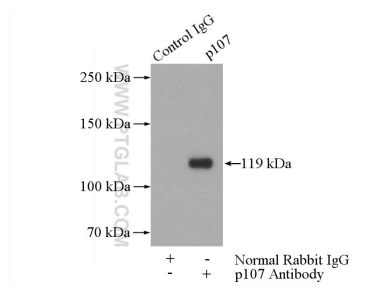
E: proteintech@ptglab.com
W: ptglab.com

This product is exclusively available under Proteintech Group brand and is not available to purchase from any other manufacturer.

Données de validation sélectionnées



mouse testis tissue were subjected to SDS PAGE followed by western blot with 13354-1-AP (p107 antibody) at dilution of 1:500 incubated at room temperature for 1.5 hours.



IP Result of anti-p107 (IP:13354-1-AP, 4ug; Detection:13354-1-AP 1:500) with mouse testis tissue lysate 4000ug.