

À des fins de recherche uniquement

Anticorps Polyclonal de lapin anti-CYP11A1



Numéro de catalogue: 13363-1-AP

36 Publications

Informations de base

Numéro de catalogue: 13363-1-AP	Numéro d'acquisition GenBank: BC032329	Méthode de purification: Purification par affinité contre l'antigène
Taille: 150ul , Concentration: 450 µg/ml by Nanodrop and 300 µg/ml by Bradford method using BSA as the standard;	Identification du gène (NCBI): 1583	Dilutions recommandées: WB 1:1000-1:4000 IHC 1:100-1:400
Hôte: Lapin	Nom complet: cytochrome P450, family 11, subfamily A, polypeptide 1	
Isotype: IgG	MW calculé 521 aa, 60 kDa	
Immunogen Catalog Number: AG4182	MW observés: 49-52 kDa	

Applications

Applications testées:

IHC, WB, ELISA

Demandes citées:

IF, IHC, WB

Spécificité de l'espèce:

Humain, rat, souris

Espèces citées:

Humain, porc, poulet, rat, souris

Remarque-IHC: il est suggéré de démasquer l'antigène avec un tampon de TE buffer pH 9,0; (*) A défaut, 'le démasquage de l'antigène peut être 'effectué avec un tampon citrate pH 6,0.

Contrôles positifs:

WB : tissu placentaire humain, cellules HeLa, tissu ovarien de souris, tissu testiculaire de rat, tissu testiculaire de souris

IHC : tissu placentaire humain, tissu testiculaire humain

Informations générales

CYP11A1 is also known as cytochrome P450C11A1, cytochrome P450sc and cytochrome P450, subfamily XIA. It is the first enzyme of all steroidogenic pathways, its elimination results in syndromes of steroid deficiency, including electrolyte imbalance, aberrant gene regulation, and suppression of male sex organ development (PMID: 12145347). Expression of CYP11A1 has been a useful tool for monitoring the differentiation state of cells from various endocrine tissues. Identification of CYP11A1 expression by 13363-1-AP detected a ~45kd band in human placenta, with respect to the reported band at 49-52kd by Roby, et al and Durkee, et al. The murine 32-kDa isoform of Cyp11a1 is not produced by omission of the first ATG-containing exon (as is the case for human CYP11A1) but perhaps by alternative translational initiation (PMID:19342447).

Publications notables

Autrice	Pubmed ID	Journal	Application
Yirong Wang	36063102	Pharm Biol	WB
Shumin Li	34487832	J Steroid Biochem Mol Biol	WB
Jinzhao Zhou	35999762	Ecotoxicol Environ Saf	WB

Stockage

Stockage:

Stocker à -20°C. Stable pendant un an après l'expédition.

Tampon de stockage:

PBS avec azoture de sodium à 0,02 % et glycérol à 50 % pH 7,3

L'aliquotage n'est pas nécessaire pour le stockage à -20C

*** Les 20ul contiennent 0,1% de BSA.

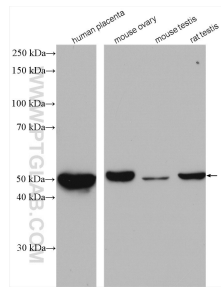
For technical support and original validation data for this product please contact:

T: 1 (888) 4PTGLAB (1-888-478-4522) (toll free in USA), or 1(312) 455-8498 (outside USA)

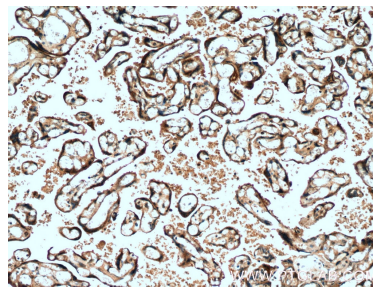
E: proteintech@ptglab.com
W: ptglab.com

This product is exclusively available under Proteintech Group brand and is not available to purchase from any other manufacturer.

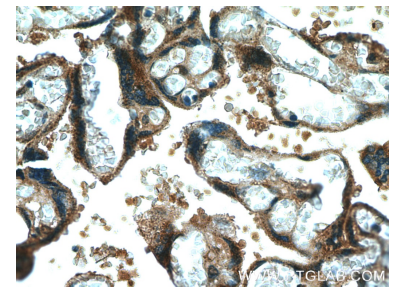
Données de validation sélectionnées



Various lysates were subjected to SDS PAGE followed by western blot with 13363-1-AP (CYP11A1 antibody) at dilution of 1:2000 incubated at room temperature for 1.5 hours.



Immunohistochemical analysis of paraffin-embedded human placenta tissue slide using 13363-1-AP (CYP11A1 Antibody) at dilution of 1:200 (under 10x lens).



Immunohistochemical analysis of paraffin-embedded human placenta tissue slide using 13363-1-AP (CYP11A1 Antibody) at dilution of 1:200 (under 40x lens).