

À des fins de recherche uniquement

Anticorps Polyclonal de lapin anti-NAT10



Numéro de catalogue: 13365-1-AP

Phare

36 Publications

Informations de base

Numéro de catalogue:
13365-1-AP

Taille:
150ul, Concentration: 500 µg/ml by
Nanodrop;

Hôte:
Lapin

Isotype:
IgG

Immunogen Catalog Number:
AG4184

Numéro d'acquisition GenBank:
BC035558

Identification du gène (NCBI):
55226

Nom complet:
N-acetyltransferase 10 (GCN5-
related)

MW calculé
1025 aa, 116 kDa

MW observés:
116 kDa

Méthode de purification:
Purification par affinité contre
l'antigène

Dilutions recommandées:
WB 1:5000-1:50000
IP 0.5-4.0 µg for IP and 1:500-1:1000
for WB
IF 1:200-1:800

Applications

Applications testées:
IF, IP, WB, ELISA

Demandes citées:
CoIP, IF, IHC, IP, RIP, WB

Spécificité de l'espèce:
Humain, rat, souris

Espèces citées:
Humain, rat, souris

Contrôles positifs:

WB : cellules A549, cellules HeLa, cellules NIH/3T3

IP : tissu testiculaire de souris,

IF : cellules HeLa,

Informations générales

NAT10 (N-acetyltransferase 10) is a nucleolar protein that is involved in regulation of telomerase activity, DNA damage response, and cytokinesis. It also plays a role in maintaining nuclear shape. Inhibition of NAT10 has been reported to rescue the misshapen nuclei in laminopathic cells via microtubule reorganization. The specificity of this antibody has been tested by siRNA. (24786082)

Publications notables

Autrice	Pubmed ID	Journal	Application
Xin-Hang Dong	34786056	Am J Transl Res	WB
Mingrui Zhai	36496983	Cells	WB
Daniel Arango	30449621	Cell	WB,IP

Stockage

Stockage:

Stocker à -20°C. Stable pendant un an après l'expédition.

Tampon de stockage:

PBS avec azoture de sodium à 0,02 % et glycérol à 50 % pH 7,3

L'aliquotage n'est pas nécessaire pour le stockage à -20C

*** Les 20ul contiennent 0,1% de BSA.

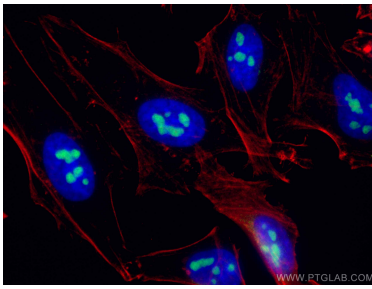
For technical support and original validation data for this product please contact:

T: 1 (888) 4PTGLAB (1-888-478-4522) (toll free
in USA), or 1(312) 455-8498 (outside USA)

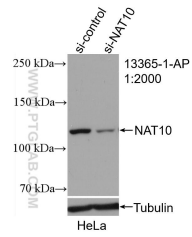
E: proteintech@ptglab.com
W: ptglab.com

This product is exclusively available under Proteintech Group brand and is not available to purchase from any other manufacturer.

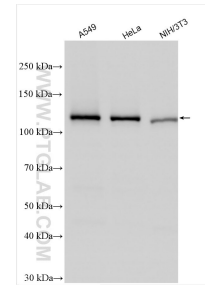
Données de validation sélectionnées



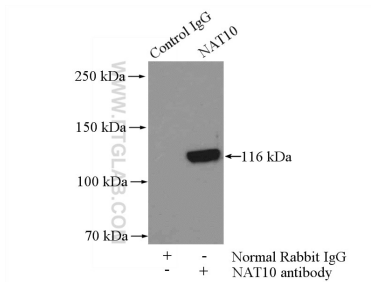
Immunofluorescent analysis of (4% PFA) fixed HeLa cells using NAT10 antibody (13365-1-AP) at dilution of 1:400 and CoraLite®488-Conjugated AffiniPure Goat Anti-Rabbit IgG(H+L), CL594-Phalloidin (red).



WB result of NAT10 antibody (13365-1-AP; 1:2000; incubated at room temperature for 1.5 hours) with sh-Control and sh-NAT10 transfected HeLa cells.



Various lysates were subjected to SDS PAGE followed by western blot with 13365-1-AP (NAT10 antibody) at dilution of 1:10000 incubated at room temperature for 1.5 hours.



IP Result of anti-NAT10 (IP:13365-1-AP, 2ug; Detection:13365-1-AP 1:500) with mouse testis tissue lysate 4000ug.